



## ***Echinothamnion* spp. ◀**

Branches shaggy and bushy, and of unequal length, with whorls of short branchlets. Similar to *Ballia hirsuta*, but branchlets shorter and coarse in texture. Reddish brown, but brown-green when bleached. Up to 150mm long.

**Standout feature: Branchlets shaggy and coarse in texture. Sometimes epiphytic.**

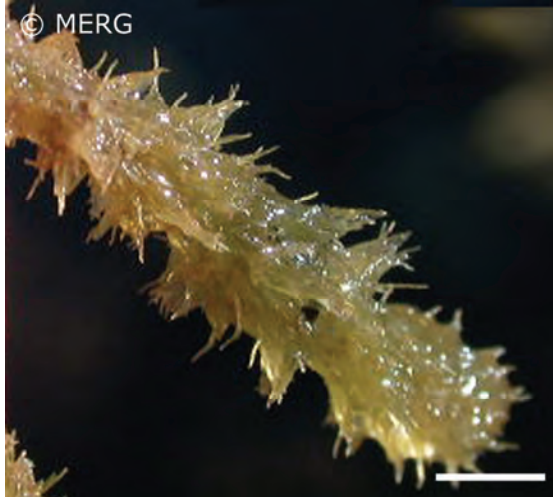
**Zone:** Intertidal to subtidal and in pools.

**Distribution:** North Island south of Auckland, all of South Island.

**Specimen from:** Wairepo Flats, Kaikoura.

**Scale (top left):** 50mm.

**Scale (bottom left):** 5mm.



## ***Helminthocladia* spp. ▶**

Tiny, tightly packed cylindrical stipes forming discrete cushions. Very firm and erect. The holdfast is a fleshy pad. Less than 15mm high and dull brownish to pink in colour.

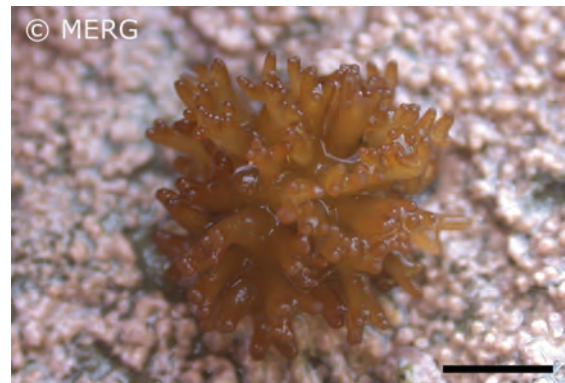
**Standout feature: Resembles tiny pin-cushions.**

**Zone:** On bare rock in the mid to low intertidal.

**Distribution:** North, South, and Chatham Islands.

**Specimen from:** Sharks Tooth, Kaikoura.

**Scale:** 5mm.



## ***Laurencia thyrsifera* ◀**

The main stipe is cylindrical with many congested side branches. The holdfast is a disc. Grows up to 150mm and is dull purplish brown in colour, green-yellow when bleached. Texture firm.

**Standout feature: Ends of side branches resemble grape clusters.**

**Zone:** Lower intertidal to subtidal on exposed reefs.

**Distribution:** North and South Islands, Stewart and Chatham Islands.

**Specimen from:** Wairepo Flats, Kaikoura.

**Scale:** 10mm.

