

## Research & Clinical Training Internship Programme

Swallowing Rehabilitation Research Laboratory  
and  
the Rose Rehab Clinics

# From Research to Clinic and Back Again...

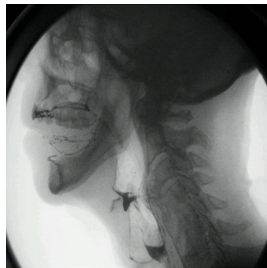
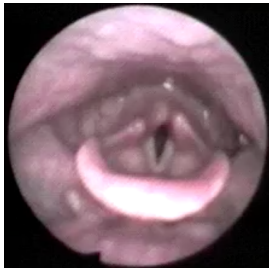
The Rose Centre for Stroke Recovery and Research is a clinically-based stroke research and rehabilitation facility housing state of the art instrumentation and staffed by leading clinicians and clinical researchers in the area of swallowing disorders. Prof Maggie-Lee Huckabee and Dr Phoebe Macrae direct the Rose Centre research programmes, and are supported by expert clinician Lucy Grieg, bioengineer Esther Guiu Hernandez and post-doctoral fellow Dr Kristin Godzdkowska. The Centre is equipped with, and is involved in development of the latest biomedical and neural technologies for understanding and visualising swallowing processes. These technologies, when applied to rehabilitation, maximise the capacity for change in swallowing function. At this facility, patients recovering from stroke and other neurological disorders have the opportunity to benefit from - and contribute to - the latest research on the diagnosis and treatment of swallowing disorders. Through our Rose Rehab Clinics, patients receive ongoing specialist clinical services.

Requests are frequently received from students, clinicians or others in the community for a short- to long-term placements to participate in a clinical or clinical research training opportunity. These individuals do not always meet the criteria, have the time or resources, or are able to make a current commitment for formal university enrolment. The Rose Centre Research and Clinical Training Internship Programme was developed to extend educational benefit to individuals outside the University community.

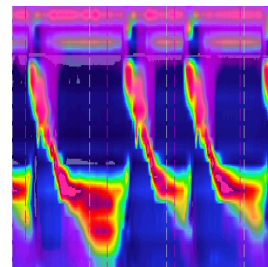
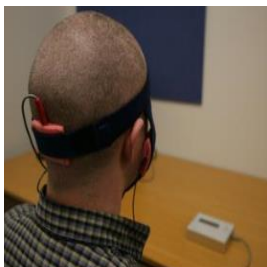
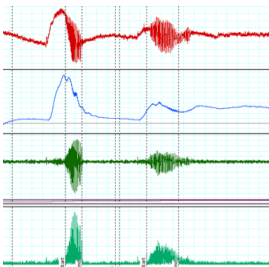
This programme is loosely structured to allow for maximal flexibility, with the option of month by month placements up to one year in duration. Expectations for research participation vary depending on the length of placement. An individual who opts for a brief one to three-month (or less) placement would likely be limited to learning research skills by serving as a directed research assistant on ongoing projects within laboratories at the Institute, participating in supervised clinical activity and engaging with instrumentation. An extended 12-month placement however may allow greater involvement in a complete project, with skills gained in all stages of research development and the potential for co-authorship on subsequent manuscripts, in addition to clinical activity. Participation requires formal application with acceptance dependent on the suitability of the candidate, the timing of the application, and the nature of the ongoing work at the Centre to assure that we can offer a well-rounded and rich learning experience.

# Top-of-the-line Learning...

An internship at the Rose Centre for Stroke Recovery and Research provides great opportunities for clinical and research education by joining into the ongoing activities of a busy, productive research lab and clinic. Depending on the duration of your training, you may be exposed to or achieve competency in:



- Videofluoroscopic Evaluation of Swallowing
- Videoesoscopic Evaluation of Swallowing
- Low resolution manometry
- High resolution and impedance manometry
- Ultrasound evaluation of swallowing
- Single pulse transcranial magnetic stimulation
- Transcranial direct current stimulation
- Surface electromyography
- Measurement of swallowing respiratory coordination
- Swallowing and cough acoustics
- Spirometry
- Cough reflex testing
- Neurophysiologic clinical swallowing assessment
- Intensive dysphagia rehabilitation programme
- sEMG biofeedback monitoring
- Biofeedback in Strength and Skill Training protocols



# Application and expressions of interest...

## Benefits to the participant:

1. Participation in closely supervised clinical research activity in order to acquire exposure and skills in
  - a. Research development and design
  - b. Methods
  - c. Instrumentation
  - d. Data gathering and/or analysis
  - e. Scientific writing
  - f. Potential for co-authorship on publications for Interns in extended visits
2. Gain advanced clinical methods for diagnosis and rehabilitation of swallowing impairment through observed and then supervised clinical service delivery for patients with swallowing impairment.
3. Participation in Rose Centre sponsored discussion groups and meetings.
4. Written evidence of research training for vita preparation.

## Programme Fees:

An internship programme fee will be charged to participants to recover overhead costs associated with office space, computer use and educational programming.

<3 months: \$600 per month\*

3-6 months: \$500 per month

6-12 months: \$400 per month

\*no smaller increment than one month.

## To apply for your internship or discuss our programme further

Please email Prof Huckabee [[maggie-lee.huckabee@canterbury.ac.nz](mailto:maggie-lee.huckabee@canterbury.ac.nz)] or Dr Phoebe Macrae [[phoebe.macrae@canterbury.ac.nz](mailto:phoebe.macrae@canterbury.ac.nz)]. Both are happy to discuss your educational goals.

The University of Canterbury Rose Centre for Stroke Recovery and Research

Level One, Leinster Chambers, 249 Papanui Road

Strowan, Christchurch NEW ZEALND

<http://www.rosecentre.canterbury.ac.nz/>

<https://www.facebook.com/SwallowALot>

The fine print: Internship applicants will only be accepted if this can be done comfortably on top of university fee-paying students; thus, application does not assure acceptance. No university credit is attached or presumed with programme completion. It should also be understood that clinical research activities at the Rose Centre are considered intellectual property of the University of Canterbury and UC staff and students.