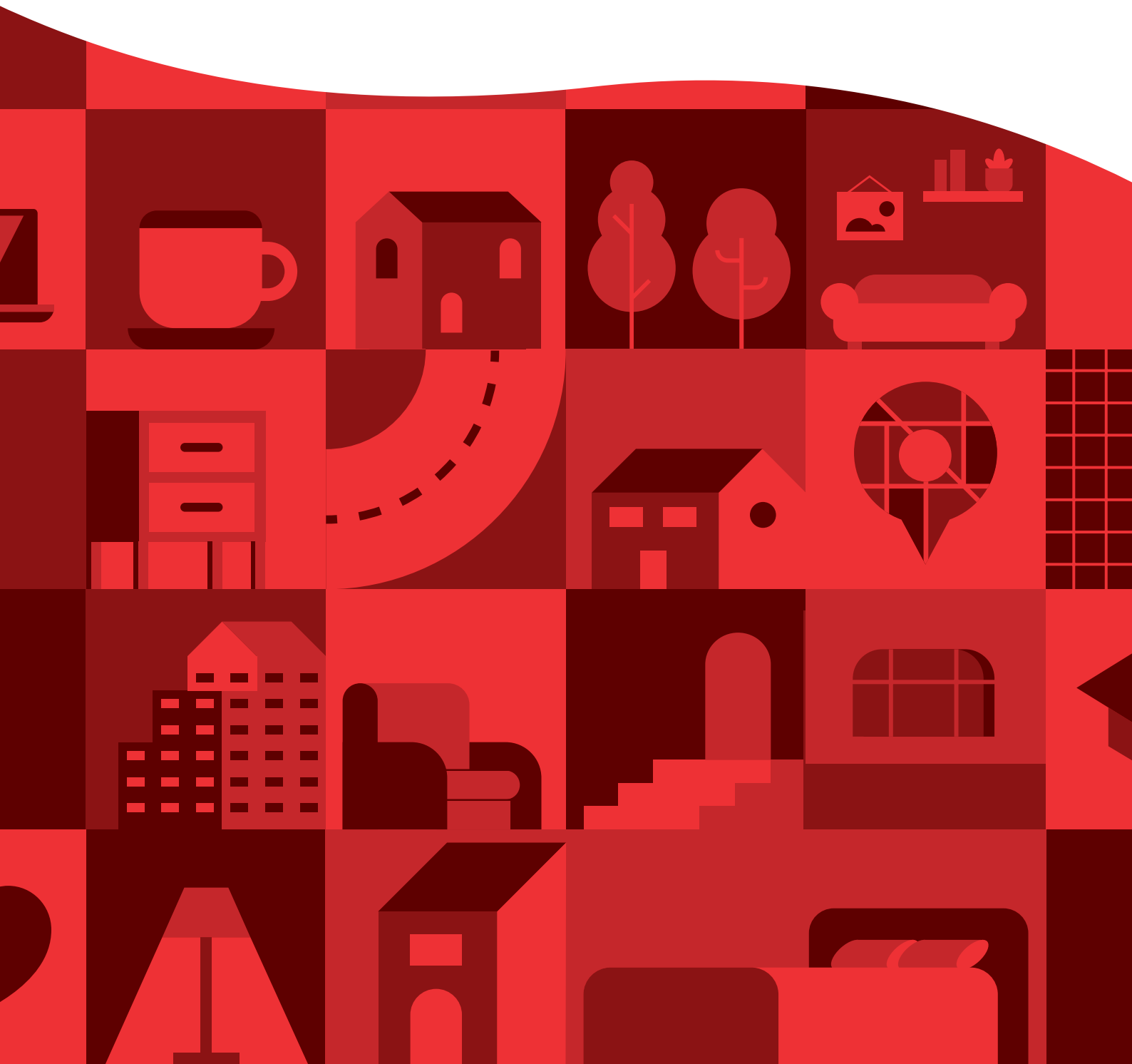


# 2026

# ACCOMMODATION GUIDE



# HE ARATAKI NOHONGA





**3,000+ BEDS**

*Many options, from single rooms to furnished houses*



# Ngā Kai o Roto | Contents

## Kia ora

- 2 Halls of residence

## Te tau tuatahi First-year options

- 4 Arcady Hall
- 6 College House
- 8 Ilam Student Accommodation
- 10 Kirkwood Avenue Hall
- 12 Rochester and Rutherford Hall
- 14 Tupuānuku
- 16 Tupuārangi
- 18 University Hall
- 20 Compare first-year options
- 21 How to apply

## Ngā tau ki mua Beyond first year

- 23 Campus Houses
- 24 Hayashi
- 25 Ilam Student Accommodation
- 26 Sonoda
- 27 Compare options beyond first year

### Rainbow Diversity Support



UC aims to provide a welcoming and inclusive environment in all halls of residence and recognises that belonging is important for everyone.



He paenga, he nohonga Tupeka Kore, Auahi Kore a UC.  
The UC campus, including all halls of residence, is smokefree and vape-free.

## Kōwhiringa anō Other options

- 29 Couples and families
- 30 Flatting and homestay
- 31 How can I finance my stay?
- 32 UC Campus Map
- 34 UC Campus Map

UC is proud to partner with Ngāi Tūāhuriri and Ngāi Tahu to uphold the mana and aspirations of mana whenua.

Published Mei May 2025. All costs are stated in New Zealand dollars. Information is correct as at the time of publication but may change. Please refer to the website for the latest information.

# Kia ora

## Nau mai ki te Arataki Nohonga. Welcome to the Accommodation Guide.

We are so glad you chose to become a part of Te Whare Wānanga o Waitaha | University of Canterbury (UC) whānau, and we look forward to welcoming you.

This guide gives you an overview of the wide range of accommodation options we have for our students, both on and off campus.

No matter which accommodation type you choose, you will encounter a wonderful mix of opportunities for new experiences, friendships, and valuable life lessons that will help you grow and succeed in the future.

UC's values of whanaungatanga, manaakitanga, and tiakitanga are lived out in our accommodation options, meaning we focus on valuing, empowering, and caring for each other, and the place we live and study. You will find a supportive, nurturing environment here.



ACCOUNTING  
AND  
TAXATION

HEALTH AND FITNESS

BUSINESS



LIAM





## WELLBEING

*All accommodation options offer a close, supportive community to help you through your UC journey*

# Halls of residence

Living in a hall of residence provides an engaging living, learning community to support your academic success and make friends for life.

### UC Accommodation

UC Accommodation partners with four accommodation providers who manage UC affiliated halls of residence. This includes all aspects of your residential life experience and contractual arrangements.

### Your home away from home

Halls offer you a safe and comfortable option from first year to postgraduate level. All halls are within 2-15 minutes' walk to lectures and include:

- Taurima/Residential Assistant support
- your own furnished room
- heating and power
- unlimited wi-fi for UC students
- computer rooms with printing facilities
- study areas offering academic support for first year students
- recreational facilities

- events and social activities
- laundry facilities
- bicycle storage and carparking at most halls.

### Resident Induction

All halls offer an induction to promote academic success, wellbeing, and awareness of UC support services. This includes a Turikura/Thrive lecture for first year students prior to lectures starting.

### Support to succeed

We have many support services to provide you with guidance and support while at UC [canterbury.ac.nz/life/support-and-wellbeing/uc-support-services](https://canterbury.ac.nz/life/support-and-wellbeing/uc-support-services)

### Code of Pastoral Care

UC must ensure that it is compliant with all requirements within the Education (Pastoral care of Tertiary and International Learners) Code of Practice 2021.

The code ensures that student accommodation fosters a supportive and inclusive community which supports the wellbeing and safety of residents

[nzqa.govt.nz/tertiary/the-code](https://nzqa.govt.nz/tertiary/the-code)

### Code of Conduct

Residents are expected to help support the safety and wellbeing of their hall communities as outlined in each hall's Handbook. The Student Code of Conduct also requires students to keep themselves and others safe.



### Keep yourself healthy

We strongly recommend registering with the UC Health Centre on arrival. Meningitis vaccines are free to domestic students under 25 living in halls of residence, and free counselling is accessible to most students

[canterbury.ac.nz/life/support-and-wellbeing/uc-health-centre](https://canterbury.ac.nz/life/support-and-wellbeing/uc-health-centre)

The UC RecCentre on campus offers free membership to all students where you can play social sport, work out in the gym, or join a fitness class.



# Te tau tuatahi | First-year options







*Arcady Hall (formerly Bishop Julius Hall) is an independent hall of residence headed by a Board of Governors and affiliated to UC through a Memorandum of Understanding and Partner Agreement.*

*Arcady Hall has 100+ years of experience of fostering a caring community that values diversity and academic success.*

# Arcady Hall

Established in 1917, this independent hall features modern facilities such as a makerspace with 3D printer.



- 162 rooms
- 7 Residential Assistants



- 7 minutes walk to campus



- 4 residential buildings
- furnished rooms with king single beds
- kitchenettes
- alcohol-free floors (available on request)



- catered – 3 meals a day, 7 days a week throughout the year
- additional suppers during study and exam weeks
- salad bar, coffee machine, and toastie makers
- outdoor dining
- packed lunches and late meals available Monday–Friday
- themed dinners, such as Japanese Night and Mid-Winter Christmas



**“I chose to live in a hall of residence to be in a supported and caring community that I can call home.”**

## Summer

Bachelor of Arts in Psychology with a minor in Media and Communication



- shared bathrooms
- bathroom:student ratio – 1:4



- laundry with drying room and outside drying area
- bed linen provided and changed weekly
- bedrooms vacuumed weekly
- bathrooms and common areas cleaned six days per week



- study centre connected to the UC network
- regular tutorials
- \$2,000 entrance scholarships for academic excellence, women in STEM, community service, first-in-family, and alumni
- an end of year celebration, including awards for excellence in Arts and Music, and Arcady Hall community engagement



- common room with pool table, foosball, sound and lighting system, table tennis, piano, SKY TV, and PlayStation
- music room
- residential life programme based on the four pillars of Live, Connect, Support, and Learn
- themed parties, Arcady Awards Night, and annual ball
- Maker Space with Lego wall and 3D printer



- secure bicycle storage



- Cranmer and Oaks both have an accessible bathroom



- cameras operating in common and outdoor areas
- swipe access



- rooms have electric or radiator heaters



- total 2025 fees: \$25,800
- residential fee: \$24,750
- deposit: \$1,050
- carparking: \$500 (subject to availability)
- includes catered term and semester breaks
- 2025 contract:  
**11 February–9 November**
- 3 instalments:  
January/April/September



- your contract is directly with Arcady Hall with standards and expectations as set out in the Hall's handbook.  
**[arcadyhall.org.nz/handbook](http://arcadyhall.org.nz/handbook)**

Professor Sonia Mazey, Principal

90 Waimairi Road, Ilam,  
Ōtautahi Christchurch 8041  
Waea: +64 3 364 2747  
Īmēra: [office@arcadyhall.org.nz](mailto:office@arcadyhall.org.nz)  
**[arcadyhall.org.nz](http://arcadyhall.org.nz)**





*College House is an independent hall of residence headed by a Board of Governors, and affiliated to UC through a Memorandum of Understanding and Partner Agreement.*

*College House is the oldest university college in New Zealand founded in 1850. In 1957, College House became independent, moving to its current premises in 1966.*

# College House

College House is set within expansive grounds and architecturally significant buildings. It features a diverse contemporary art collection.



- 159 rooms
- 6 Residential Assistants



- 7 minutes walk to campus



- 11 residential houses, each with two house leaders
- furnished 13m<sup>2</sup> rooms including king single beds
- kitchenettes
- most rooms North facing



- catered – 3 meals a day, 7 days a week throughout the year
- additional suppers during study and exam weeks
- two salad bars, microwaves, toasters, and toastie makers
- meal ordering app
- packed lunches and late meals
- formal dining during term time
- guest speakers
- annual ball and themed dinners



- shared bathrooms
- bathroom:student ratio – 1:5



**“In College House, there was no shortage of activities and events organised by the hall to ensure we all met and got to know one another.”**

**Aarnav**

Bachelor of Engineering (with Honours) and  
Bachelor of Laws





- laundry with drying room
- ski, surf, and snowboard storage
- bed linen provided and changed weekly
- bedrooms serviced weekly
- common rooms cleaned daily



- study centre with tutorial bays and interactive screens
- computer suite and printer connected to UC network
- architecturally significant library
- 850+ tutorials per year
- scholarships available for residents



- ground floor accommodation with bathroom, kitchenette, dining room, common room, chapel, and study centre access
- lift access in administration building



- secure bicycle storage and separate high-performance bicycle storage



- common room with kitchen, gas fire, Sky TV, and AV system
- recreation centre with light and sound system
- sports lounge with table tennis, billiard table, smart TV and Sky TV
- chapel service held once a term
- basketball hoop, sports field, fitness equipment, and all-weather tennis court
- formal lounge with gas fire and grand piano
- annual sporting and cultural exchange with Selwyn College, Ōtepoti Dunedin
- strong alumni network
- 100+ artworks of national significance



- swipe access, security surveillance, and fenced campus
- night porter security 3 nights per week



- rooms have individual wall heaters or in-ceiling heating



- total 2025 fees: \$28,718
- residential fee: \$27,663
- deposit: \$1,055
- carparking: \$125 per term (subject to availability)
- includes catered term and semester breaks
- 2025 contract:  
**9 February–24 hours after final UC commitment**
- 3 instalments:  
January/April/August



- your contract is directly with College House with standards and expectations as set out in the Hall's handbook.  
**[collegehouse.org.nz/house-rules](https://collegehouse.org.nz/house-rules)**

Richard Taylor, Principal  
100 Waimairi Road, Ilam,  
Ōtautahi Christchurch 8041  
Waea: +64 3 364 2001  
Īmēra: [office@collegehouse.org.nz](mailto:office@collegehouse.org.nz)  
**[collegehouse.org.nz](https://collegehouse.org.nz)**



**ILAM STUDENT  
ACCOMMODATION**

**UniLodge**

*Ilam Student Accommodation is operated by UniLodge through a contract and pastoral care collaboration with UC.*

*Unilodge provides student accommodation in 130+ locations across Aotearoa and Australia, and has been providing a wide range of student living environments for over 30 years.*

# Ilam Student Accommodation

This apartment-style complex offers independent living on campus to 849 residents.



- 849 rooms (up to 50% first years)
- Taurima: student ratio – 1:25



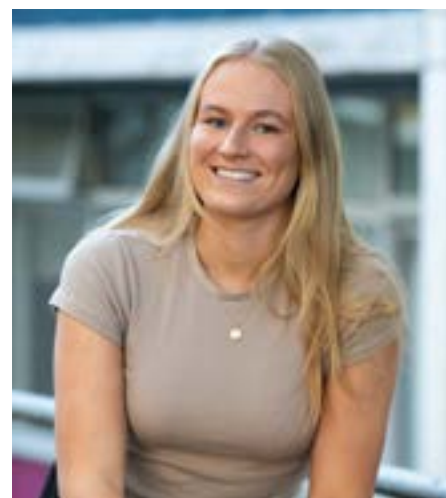
- 2 apartment types – Kōwhai and Hīnau
- 41-week contracts for first-year students
- furnished rooms with king single beds
- non-alcohol, and rainbow-friendly apartments
- Māori and Pacific apartments
- single-gender apartments may be available
- flat together with your friends.



- self-catered – shared kitchens equipped with essentials (personal cutlery and crockery can be purchased)
- optional lunch (picked up on campus) and dinner (on-site at Ilam) plan (14 meals per week)
- shared dining/living room



- shared bathrooms
- bathroom:student ratio – Kōwhai 2:6, Hīnau 1:3, 2:4, 2:5



**“I have met heaps of friends both in Ilam and other halls.”**

**Isabella**

Bachelor of Commerce in Marketing, and Strategy and Entrepreneurship





Kowhai bedroom



- 5 minutes walk to campus
- central location surrounded by other first-year halls



- Kōwhai – in-flat washing machine and dryer
- Hīnau – on-site laundry room
- bed linen not provided, but can be purchased
- light housekeeping service every two weeks



- computer room and printer connected to UC network
- learning groups arranged in specific subjects according to need and prior to exams
- study room



- common room with table tennis, SKY TV, and pool table
- Inter-UniLodge competitions, plus Kia Tupu Leadership programme, with many organised residential life events
- outdoor gym and social spaces



- secure bicycle storage



- wheelchair accessible Kōwhai apartments



- swipe card access to buildings
- key access to bedrooms
- 24-hour student support and emergency response
- CCTV



- panel or ceiling heaters in each bedroom and common areas



- total 2025 fees: \$11,988 (Hīnau), \$12,603 (Kōwhai)
- residential fee: \$10,988 (Hīnau), \$11,603 (Kōwhai)
- deposit: \$1,000
- carparking: \$600 (subject to availability)
- 2025 contract: **8 February–22 November** (41 weeks)
- accommodation includes term and semester breaks
- fees payable fortnightly, semesterly, or lump sum



- your contract is directly with UniLodge with standards and expectations as set out in the Hall's Aratohu Kainoho Resident Handbook.  
**[unilodge.com.au/student-accommodation-christchurch/ilam-apartments/faq](https://unilodge.com.au/student-accommodation-christchurch/ilam-apartments/faq)**

Jacob Waitere, General Manager  
Victoria Thornton, Kaitātai

2 Homestead Lane, Ilam,  
Ōtautahi Christchurch 8041  
Waea: +64 3 266 0400  
Īmēra: [ilam@unilodge.co.nz](mailto:ilam@unilodge.co.nz)  
**[unilodge.com.au/student-accommodation-christchurch/ilam-apartments](https://unilodge.com.au/student-accommodation-christchurch/ilam-apartments)**



KIRKWOOD AVENUE HALL

UniLodge

*Kirkwood Avenue Hall is operated by UniLodge through a contract and pastoral care collaboration with UC.*

*Unilodge provides student accommodation in 130+ locations across Aotearoa and Australia, and has been providing a wide range of student living environments for over 30 years.*

# Kirkwood Avenue Hall

Kirkwood Avenue Hall offers a close-knit community for up to 64 first-year ākonga students.



- 54 rooms and 10 ensuite rooms
- 4 Taurima



- catered - 14 meals per week (lunch on campus, dinner on site (tbc))
- individual food storage
- dining room



- 2-5 minutes walk to campus



- one residential building with all rooms on one level
- furnished rooms with king single beds
- hand basin and mirror in each room



- shared bathrooms or limited ensuite rooms
- bathroom:student ratio – 1:4



**“Kirkwood especially appealed to me because of the community feel, cooking for myself, and accessibility of and to the University.”**

**Madeleine**

Bachelor of Criminal Justice and a Bachelor of Laws





- laundry
- bed linen not provided, but can be purchased
- bathrooms and common rooms cleaned daily



- study areas
- computer room and printer connected to UC network
- support programme to aid students in the first weeks of university and hall life
- learning groups arranged in specific subjects according to need and prior to exams



- multiple recreational spaces with table tennis, foosball, pool table, and SKY TV
- Inter-UniLodge competitions, plus Kia Tupu Leadership programme, with many organised residential life events
- vegetable garden
- located near the UC RecCentre



- secure bicycle storage



- wheelchair accessible rooms



- swipe card access to building
- key access to bedrooms
- 24-hour student support and emergency response
- CCTV



- panel heater in each bedroom



- total 2025 fees: \$12,398 (single), \$13,874 (ensuite)
- residential fee: \$11,398 (single), \$12,874 (ensuite)
- deposit: \$1,000
- carparking: \$600 (limited)
- 2025 contract: **8 February–22 November** (41 weeks)
- accommodation includes term and semester breaks
- fees payable fortnightly,

semesterly, or lump sum



- your contract is directly with UniLodge with standards and expectations as set out in the Hall's Aratohu Kainoho Resident Handbook.  
**[unilodge.com.au/student-accommodation-christchurch/kirkwood/faq](https://unilodge.com.au/student-accommodation-christchurch/kirkwood/faq)**

Jacob Waitere, General Manager

Martine Hearfield, Kaitātai

7 Kirkwood Avenue, Ilam,

Ōtautahi Christchurch 8041

Waea: +64 3 266 0400

Īmēra: [kirkwood@unilodge.co.nz](mailto:kirkwood@unilodge.co.nz)

**[unilodge.com.au/student-accommodation-christchurch/kirkwood](https://unilodge.com.au/student-accommodation-christchurch/kirkwood)**



## ROCHESTER & RUTHERFORD HALL

*Rochester and Rutherford Hall is governed by an Executive Council and affiliated to UC through a Partner Agreement and pastoral care collaboration.*

*The Hall was founded in 1984 with the merger of Rochester Hall (1956) and Rutherford Hall (1951).*

# Rochester and Rutherford Hall

Rochester and Rutherford Hall is located in grounds featuring mature trees and gardens.



- 192 rooms
- 6 Residential Tutors



- 2 minutes walk to campus



- 5 residential buildings
- furnished rooms with king single divan beds
- kitchenettes



- catered – 3 meals a day, 7 days a week
- dining hall with servery, SKY TV, and grand piano
- suppers during study and exam weeks
- early and late meals, and packed lunches available (including frozen meals)
- annual ball and themed dinners
- BBQ area and Tribute Garden



- shared bathrooms
- bathroom:student ratio – 1:4



**“My tutor has been really supportive with my studies, and this has made a difference with my entrance into university.”**

**Brooke**

Bachelor of Engineering with Honours





- laundry
- bed linen provided and changed weekly
- bathrooms and common rooms cleaned five times per week
- bedrooms cleaned fortnightly



- Yardley study centre, reading room, and O'Dowd study room for study and tutorials
- study areas in recreation room and TV room
- computer room and printer connected to UC network
- tutorials held during term time



- secure bicycle storage



- security fob access to buildings and bedrooms
- CCTV in carpark, house foyers, and administration block
- carpark with electronic gate



- recreation room with pool table, foosball, table tennis, air hockey, and SKY TV
- regular chapel services
- music room with piano, bass guitar, drums, keyboard, and sound system
- Student Executive activities



- ground floor accommodation with bathroom, dining room, and study centre access



- rooms centrally heated with individually controlled radiators

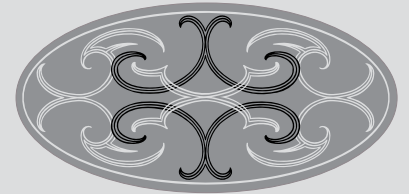
Jo Morrow, Principal  
77 Ilam Road, Ilam,  
Ōtautahi Christchurch 8041  
Waea: +64 3 364-2799  
Īmēra: [office@rochester-rutherford.org.nz](mailto:office@rochester-rutherford.org.nz)  
[rochester-rutherford.org.nz](http://rochester-rutherford.org.nz)



- total 2025 fees: \$24,600
- residential fee: \$23,200
- deposit: \$2,750 (\$600 admin fee + \$2,150 fees in advance)
- \$500 refundable contingency fee
- \$300 residents' association fee
- carparking: \$450 (subject to availability)
- 2025 contract:  
**12 February–24 hours after final UC commitment**
- term and semester breaks accommodation by arrangement
- 3 instalments:  
January/April/August



- your contract is directly with Rochester and Rutherford Hall with standards, policies, and expectations as set out in the Hall's handbook. [rochester-rutherford.org.nz/handbook](http://rochester-rutherford.org.nz/handbook)



**TUPUĀNUKU**

*Tupuānuku is operated by UniLodge through a contract and pastoral care collaboration with UC.*

*Unilodge provides student accommodation in 130+ locations across Aotearoa and Australia, and has been providing a wide range of student living environments for over 30 years.*

# Tupuānuku

Tupuānuku is a new hall of residence with a cultural narrative focused on kainoho (resident) growth.



- 375 standard rooms, 129 ensuite rooms, and 29 accessible ensuite rooms, and a 2-bed apartment
- Taurima: student ratio – 1:25



- catered – 19 meals a week (including brunch at weekends)
- shared kitchen
- shared dining space opening onto an internal courtyard
- catered dining room



- 5 minutes walk to campus
- pedestrian hall



- shared bathrooms or ensuite rooms
- bathroom:student ratio – 1:4



- furnished rooms with king single beds
- kitchenettes on each floor
- Māori and Pacific colocation



- laundry



- study space on each floor
- bookable study rooms
- learning groups arranged in specific subjects according to need and prior to exams



**‘Being in a hall first year is a great way to stay open and aware of opportunities presented by the University, while also feeling a sense of community and support.’**

**Sol**

Studying towards a Bachelor of Arts in Political Science and International Relations with a minor in French, and a Bachelor of Laws





- social space on each floor
- shared lounge
- media and music room
- games room with pool table, air hockey, table tennis, and foosball
- internal courtyard
- Inter-UniLodge competitions, plus Kia Tupu Leadership programme, with many organised residential life events



- full CCTV coverage
- swipe card access to building and bedroom



- centrally heated



- total 2025 fees: \$22,484 (single), \$23,960 (ensuite)
- residential fee: \$21,484 (single), \$22,960 (ensuite)
- deposit: \$1,000
- 2025 contract: **8 February–22 November** (41 weeks)
- includes catered term and semester breaks
- fees payable fortnightly, semesterly, or lump sum



- your contract is directly with UniLodge with standards and expectations as set out in the Hall's Aratohu Kainoho Resident handbook.  
**[unilodge.com.au/student-accommodation-christchurch/tupuanuku/faq](https://unilodge.com.au/student-accommodation-christchurch/tupuanuku/faq)**



- secure bicycle storage



- on-road parking only



- fully accessible with lifts, ramps, and specifically designed kitchen space
- 29 accessible ensuite rooms

Jacob Waitere, General Manager  
Daniel Thornton, Kaitātai  
3 Homestead Lane, Ilam,  
Ōtautahi Christchurch 8041  
Waea: +64 3 266 0400  
Īmēra: [Tupuanuku@unilodge.co.nz](mailto:Tupuanuku@unilodge.co.nz)  
**[unilodge.com.au/student-accommodation-christchurch/tupuanuku](https://unilodge.com.au/student-accommodation-christchurch/tupuanuku)**



## TUPUĀRANGI

*Tupuārangi is currently under construction and scheduled to open for the 2026 academic year.*

*Tupuārangi will be operated through a contract and pastoral care collaboration with UC.*

# Tupuārangi

UC's newest hall, Tupuārangi, is located next to Tupuānuku on the border of the Ilam heritage garden.



- 283 ensuite rooms
- Taurima: student ratio – 1 :25



- ensuite rooms



- 5 minutes walk to campus
- pedestrian hall



- laundry



- furnished rooms with king single beds
- dimmable lighting
- Māori and Pacific colocation



- low sensory study space on each floor
- bookable study rooms
- learning groups arranged in specific subjects according to need and prior to exams



- catered – 19 meals a week (brunch at weekends)
- shared events kitchen
- catered dining room

### Cultural narrative

Tupuārangi has been gifted its name by the local iwi Ngai Tuahuriri. The design will bring the gardens into the building to provide a safe, peaceful retreat that supports the health and wellbeing of students. It will also have a cultural narrative embedded into the design features of the building, creating design that celebrates the weaving together of the Ngai Tuahuriri aesthetic and local stories.

Tupuārangi is one of the nine stars associated with Matariki. Tupuārangi (Atlas) has a connection to food and growth. 'Tupu' or 'tipu' means 'to grow' and rangi is taken from Rangi - the Sky, representing sustenance received from the upper canopies of Aotearoa New Zealand's native forests providing both nourishment and resources for growth.





- low sensory quiet room
- Kahui living places with kitchenettes on each floor
- 100+ organised residential life events



- fees will be available online from 1 August 2025
- includes catered term and semester breaks



- Your contract is directly with the operator (to be confirmed) with standards and expectations as set out in the Hall's handbook.



- secure bicycle storage



- on-road parking only



- fully accessible with lifts and ramps



- full CCTV coverage
- swipe card access to building and bedroom



- centrally heated

Abigail Frederikse, Accommodation and Campus Life Manager

Waea: +64 3 369 3205  
 Īmēra:  
[tupuarangi\\_queries@canterbury.ac.nz](mailto:tupuarangi_queries@canterbury.ac.nz)



**“I chose to live in a hall because I wanted to make as many friends as I could in my first year whilst maintaining an efficient studying schedule.”**

**Ben**

Tupuānuku  
 Conjoint Bachelor of Product Design and Science  
 in Statistics and Industrial Product Design



UNIVERSITY HALL

UniLodge

*University Hall is operated by UniLodge through a contract and pastoral care collaboration with UC.*

*Unilodge provides student accommodation in 130+ locations across Aotearoa and Australia, and has been providing a wide range of student living environments for over 30 years.*

# University Hall

University Hall offers a mix of living options in a vibrant student community.



- 561 rooms
- Taurima: student ratio – 1:25



- 5 minutes walk to campus



- East and West single rooms, 7 ensuite rooms
- 3 couple's self-contained flats (see [page 29](#))
- furnished rooms with king single beds
- hand basin and mirror in most East rooms
- kitchenettes
- Single-gender, non-alcohol, and rainbow-friendly options
- Māori and Pacific colocation



- catered – 19 meals a week (brunch at weekends)
- dining room with self-service salad bar and refreshments area
- early and late meals and packed lunches
- shared bathrooms
- bathroom:student ratio – West 1:6, East 2:5, East flats 1:3



**“My RA [Taurima] is very friendly and approachable, I go to them first when I’m not sure of something.”**

**Tyler**

Bachelor of Arts





- laundry
- bed linen not provided, but can be purchased
- shared bathrooms in flats cleaned twice weekly



- dedicated tutorial and study rooms
- computer room and printer connected to UC network
- support programme designed to aid students in the first weeks of university and hall life
- learning groups arranged in specific subjects according to need and prior to exams



- common room with SKY TV
- volleyball court and basketball hoop
- tennis courts nearby
- Inter-UniLodge competitions, plus Kia Tupu Leadership programme, with many organised residential life events



- bicycle storage



- wheelchair accessible flats



- swipe card access to buildings, and key to bedroom
- 24-hour student support and emergency response
- CCTV



- radiators in each room



- total 2025 fees: \$19,614 (West), \$22,566 (East)
- residential fee: \$18,614 (West), \$21,566 (East)
- deposit: \$1,000
- carparking: \$600 (subject to availability)
- 2025 contract: **8 February–22 November** (41 weeks)
- includes catered term and semester breaks
- fees payable fortnightly, semesterly, or lump sum



- your contract is directly with UniLodge with standards and expectations as set out in the Hall's Aratohu Kainoho Resident handbook.  
**unilodge.com.au**  
**/student-accommodation-christchurch/universityhall/faq**

Jacob Waitere, General Manager

Evan Moran, Kaitātai

9 Maidstone Road, Ilam,  
Ōtautahi Christchurch 8041

Waea: +64 3 266 0400  
Īmēra: universityhall@unilodge.co.nz

**unilodge.com.au/student-accommodation-christchurch/universityhall**

# Compare first-year options

Services and suitability	Services		Suitability		
	Meals provided	Linen provided	Under 18 years of age international student	Single gender accommodation	Wheelchair accessible
Hall of Residence					
Arcady Hall	•	•	•	—	•
College House	•	•	•	—	•
Ilam Student Accommodation Hīnau: 3–5 bedroom apartments Kōwhai: 6 bedroom apartments	optional meal plan for lunch and dinner	— —	— —	May be possible	— •
Kirkwood Avenue Hall	•	—	—	—	•
Rochester and Rutherford Hall	•	•	•	—	•
Tupuānuku	•	—	•	—	•
Tupuārangi	•	—	•	—	•
University Hall	•	—	•	•	•

Contract length and cost	Contract			Costs in 2025 (NZ\$)			
	Contract length	One semester	Summer stay	Residential fee (power incl.)	Additional fees*	Annual carparking fee	Payment frequency
Hall of Residence							
Arcady Hall	Feb–Nov	—	—	\$24,750	\$1,050	\$500	Jan/Apr/Sept
College House	Feb–Nov	—	—	\$27,663	\$1,055	\$100/term	Jan/May/Sept
Ilam Student Accommodation Hīnau: 3–5 bedroom apartments	41 weeks	•	•	\$10,988 self-catered	\$1,000	\$600	Fortnightly†
Kōwhai: 6 bedroom apartments	41 weeks	•	•	\$11,603 self-catered	\$1,000	\$600	Fortnightly†
Kirkwood Avenue Hall (single)	41 weeks	•	—	\$11,398	\$1,000	\$600	Fortnightly†
Kirkwood Avenue Hall (single ensuite)	41 weeks	•	—	\$12,874	\$1,000	\$600	Fortnightly†
Rochester and Rutherford Hall	Feb–Nov**	—	Limited	\$23,200	\$2,750	\$450	Jan/Apr/Aug
Tupuānuku (single)	41 weeks	•	•	\$21,484	\$1,000	—	Fortnightly†
Tupuānuku (single ensuite)	41 weeks	•	•	\$22,960	\$1,000	—	Fortnightly†
Tupuārangi (single ensuite)	41 weeks	•	—				Fortnightly†
University Hall (West – standard)	41 weeks	•	—	\$18,614	\$1,000	\$600	Fortnightly†
University Hall (East – standard)	41 weeks	•	—	\$21,566	\$1,000	\$600	Fortnightly†

\* Additional fees consist of an administration fee, refundable contingency fee, and residents' association fee.

\*\* Excluding term and semester breaks unless by arrangement with the Principal.

† Fees payable fortnightly, semesterly, or lump sum.

Residence fees for 2026 are available online in **August 2025**.

If you are an international student under 18 years of age, you must stay either in a homestay, a catered hall of residence, or with a designated caregiver until your 18th birthday.

 **Take a look**

View videos and 360 degree panoramas at [canterbury.ac.nz/life/accommodation/halls-of-residence/about-uc-halls-of-residence/videos-and-360-views-halls](https://canterbury.ac.nz/life/accommodation/halls-of-residence/about-uc-halls-of-residence/videos-and-360-views-halls)



# How to apply

You can apply to live in a UC hall of residence if you are studying (or about to study) at a tertiary institution in Christchurch.

## Apply online

Complete an online application form at [canterbury.ac.nz/accommodation](https://canterbury.ac.nz/accommodation). You will be asked to select your preferred hall and an alternation option.

## Provide a reference

A Common Confidential Reference Form (CCRF) is required for all domestic school leavers or gap year students.

## Selection Process

Halls start reading applications as soon as they are submitted so it is in your best interest to complete your application and request your CCRF early. They aim to establish a diverse community with a mix of degree programmes, representation from around Aotearoa as well as internationally, and taking into consideration priority groups.

## General Waitlist

Students who are not offered a room in their preferred hall will either be offered an alternative room type or will automatically be placed on a General Waitlist. Should you receive an offer, consider it very carefully as you may not receive another opportunity. The General Waitlist is not ranked, and offers depend on the type of resident the hall is looking for and taking into consideration priority groups.



## Contracts and fees

Your contract is directly with your hall. You will be required to pay a deposit and sign your contract by the due date to secure your room. Your deposit is made up of a refundable contingency fee, an administration fee, and a residential life fee. First instalments are due mid-January. Amounts and dates differ between halls so ensure you are aware of when your fees are due.

**Please note:** Study Link and most UC scholarships are not able to be used for your hall deposit or first instalment.



## Accommodation Services Fee

UC charges an accommodation services fee to all contracted new students for support throughout the application process, training for Taurima/Residential Assistants, and pastoral care.

## Summer Accommodation

If you are undertaking summer study, accommodation may be available on campus. Details will be provided in September at [canterbury.ac.nz/life/accommodation](https://canterbury.ac.nz/life/accommodation).

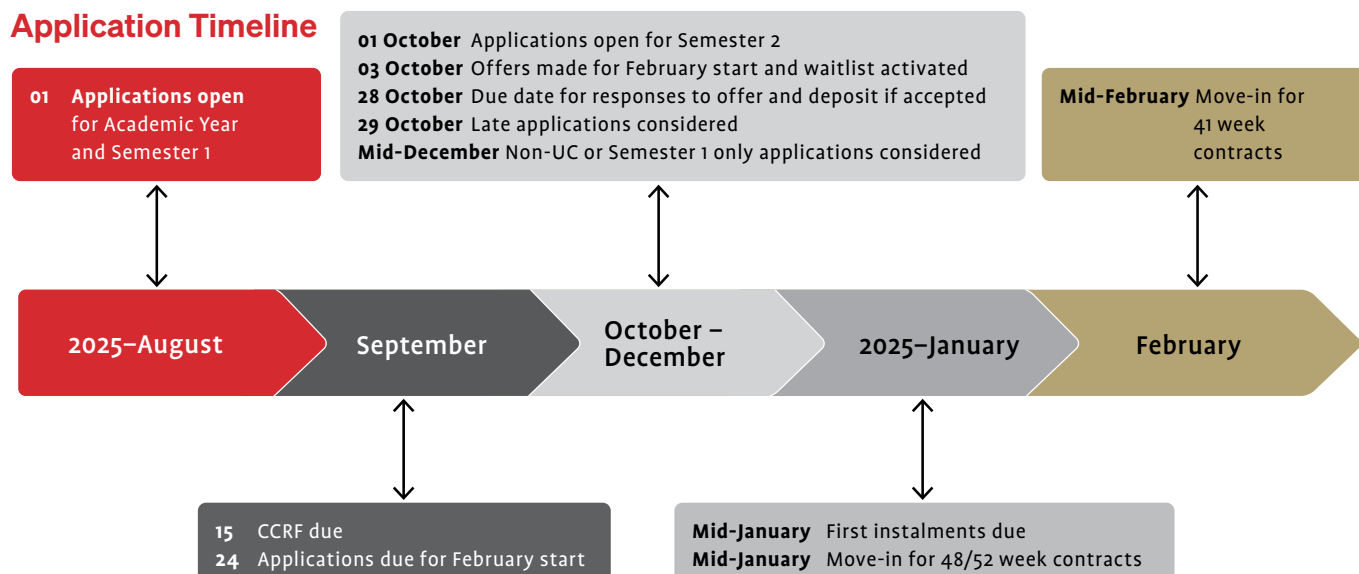
Scan this link for the latest dates



Scan this link for a detailed overview of the enrolment process



## Application Timeline



# Ngā tau ki mua | Beyond first year







CAMPUS HOUSES

UniLodge

*Campus Houses are operated by UniLodge through a contract and pastoral care collaboration with UC.*

*Unilodge provides student accommodation in 130+ locations across Aotearoa and Australia, and has been providing a wide range of student living environments for over 30 years.*

# Campus Houses

A new addition to on-campus accommodation includes 26 houses and 11 flats located on the perimeter of the main campus and halls of residence.



• key to house and bedroom



• on and off-street parking



• heating unit in each room and living room



• 48 or 52-week contracts  
• your contract is directly with UniLodge with standards and expectations as set out in the Hall's Aratohu Kainoho Resident handbook.  
**[unilodge.com.au/student-accommodation-christchurch/campus-houses/faq](http://unilodge.com.au/student-accommodation-christchurch/campus-houses/faq)**



• 90 rooms  
• Residential Life Assistant



• self-catered—shared kitchens equipped with essentials  
• shared dining/living room



• 2-5 minutes walk to campus



• shared bathroom



• single and double rooms  
• furnished including single or queen beds.  
• non-alcohol, and rainbow-friendly houses available  
• single-gender houses may be available  
• lawns and gardens taken care of by UC staff.



• laundry  
• bed linen not provided, but can be purchased



• shared living room in each house  
• residential life programme on offer, supporting social, academic, and wellbeing events, and Kia Tupu Leadership programme

Jacob Waitere, General Manager  
Martine Hearfield, Kaitātai

C/- 7 Kirkwood Avenue, Ilam,  
Ōtautahi Christchurch 8041

Waea: +64 3 266 0400

Īmēra: [campushouses@unilodge.co.nz](mailto:campushouses@unilodge.co.nz)

**[unilodge.com.au/student-accommodation-christchurch/campus-houses](http://unilodge.com.au/student-accommodation-christchurch/campus-houses)**



DOVEDALE HALLS:  
SONODA & HAYASHI

UniLodge

*Hayashi is operated by UniLodge through a contract and pastoral care collaboration with UC.*

*Unilodge provides student accommodation in 130+ locations across Aotearoa and Australia, and has been providing a wide range of student living environments for over 30 years.*

# Hayashi

Hayashi's 16 modern townhouses are located on the Dovedale Campus.



- 77 student rooms including six ensuite rooms and six accessible rooms
- 3 Taurima



- 15 minutes walk to campus



- 16 two-storey townhouses including 10 couple's self-contained studios (see [page 27](#))
- furnished rooms with king single or double beds
- single gender, non-alcohol, and rainbow-friendly townhouses available



- bicycle stands



- self-catered—shared kitchens equipped with essentials (personal cutlery and crockery can be purchased online)
- shared dining/living room



- shared bathrooms or limited ensuite rooms
- bathroom:student ratio – 1:2 or 2:5



- laundry
- bed linen not provided, but can be purchased
- bathrooms and common rooms cleaned every 2 weeks



- shared living room in each townhouse
- residential life programme on offer, supporting social, academic, and wellbeing events



- key to individual townhouse and bedroom



- radiator heating



- 48 or 52-week contracts
- your contract is directly with UniLodge with standards and expectations as set out in the Hall's Aratohu Kainoho Resident handbook. [unilodge.com.au/student-accommodation-christchurch/hayashi/faq](https://unilodge.com.au/student-accommodation-christchurch/hayashi/faq)

Jacob Waitere, General Manager  
Martine Hearfield, Kaitātai  
32 Dovedale Avenue, Ilam,  
Ōtautahi Christchurch 8041  
Waea: +64 3 266 0400  
Imēra: [hayashi@unilodge.co.nz](mailto:hayashi@unilodge.co.nz)  
[unilodge.com.au/student-accommodation-christchurch/hayashi](https://unilodge.com.au/student-accommodation-christchurch/hayashi)





**ILAM STUDENT  
ACCOMMODATION**

**UniLodge**

*Ilam Student Accommodation is operated by UniLodge through a contract and pastoral care collaboration with UC.*

*Unilodge provides student accommodation in 130+ locations across Aotearoa and Australia, and has been providing a wide range of student living environments for over 30 years.*

# Ilam Student Accommodation

This apartment-style complex offers independent living on campus to 849 residents.



- 849 student rooms (up to 50% second year+ or returners)
- Taurima: student ratio – 1:50



- 5 minutes walk to campus



- 3 apartment types – Mānuka, Kōwhai, Hīnau
- furnished rooms with single or king single beds
- non-alcohol, and rainbow-friendly apartments available
- single-gender apartments may be available



- computer room and printer connected to UC network
- study room



- secure bicycle storage



- self-catered—shared kitchens equipped with essentials
- optional meal plan



- bathroom:student ratio – Mānuka 1:6, Kōwhai 2:6, Hīnau 1:2, 1:3, 2:4, 2:5



- Mānuka and Kōwhai – in-flat washing machine and dryer, Hīnau – on-site laundry
- bed linen not provided
- light housekeeping service every two weeks



- common room with table tennis, pool table, and SKY TV
- 100+ organised residential life events



- swipe card access to building and key to bedroom
- 24-hour student support and emergency response
- CCTV



- panel or ceiling heaters



- 48 or 52-week contracts
- your contract is directly with UniLodge with standards and expectations as set out in the Hall's Aratohu Kainoho | Resident handbook. [unilodge.com.au/student-accommodation-christchurch/ilam-apartments/faq](https://unilodge.com.au/student-accommodation-christchurch/ilam-apartments/faq)

Jacob Waitere, General Manager  
Victoria Thornton, Kaitātai

2 Homestead Lane, Ilam,  
Ōtautahi Christchurch 8041  
Waea: +64 3 266 0400  
Imēra: [ilam@unilodge.co.nz](mailto:ilam@unilodge.co.nz)  
[unilodge.com.au/student-accommodation-christchurch/ilam-apartments](https://unilodge.com.au/student-accommodation-christchurch/ilam-apartments)



DOVEDALE HALLS:  
SONODA & HAYASHI

UniLodge

*Sonoda is operated by UniLodge through a contract and pastoral care collaboration with UC.*

*Unilodge provides student accommodation in 130+ locations across Aotearoa and Australia, and has been providing a wide range of student living environments for over 30 years.*

# Sonoda

Sonoda offers 107 rooms located in Japanese-inspired landscaped grounds.



- 107 single student rooms
- 3 Taurima



- shared bathrooms
- bathroom:student ratio – 1:5



- swipe card access to building and key to bedroom
- 24-hour student support and emergency response
- CCTV



- secure bicycle storage



- heated ceiling in bedroom and common areas



- 48 or 52-week contracts
- your contract is directly with UniLodge with standards and expectations as set out in the Hall's Aratohu Kainoho Resident handbook.  
**unilodge.com.au**  
**/student-accommodation-christchurch/sonoda/faq**

Jacob Waitere, General Manager  
Martine Hearfield, Kaitātai  
32 Dovedale Avenue, Ilam,  
Ōtautahi Christchurch 8041  
Waea: +64 3 266 0400  
Īmēra: sonoda@unilodge.co.nz  
**unilodge.com.au/student-accommodation-christchurch/sonoda**



- 15 minutes walk to campus



- 8 buildings of 22 5-bedroom apartments and 4 couple's self-contained flats (see **page 29**)
- furnished rooms with single beds, hand basin, and mirror
- single gender, non-alcohol, and rainbow-friendly apartments available
- meeting and event facilities
- option to flat together with your friends



- self-catered



- laundry in each building
- bed linen not provided, but can be purchased
- bathrooms and common rooms cleaned once per fortnight



- computer room and printer connected to UC network



- common room with kitchen, table tennis, pool table, and SKY TV
- residential life programme supporting social, academic, and wellbeing events



# Compare options beyond first year

Services and suitability	Services			Suitability		
	Meals provided	Laundry included	Linen provided	Couples	Single gender	Wheelchair accessible
Hall of Residence						
Campus Houses	—	•	—	•	•	—
Hayashi	—	•	—	•	•	•
<b>Ilam Student Accommodation</b> Hīnau: 2 bedroom apartments Hīnau: 3–5 bedroom apartments Kōwhai: 6 bedroom apartments Mānuka: 6 bedroom apartments	Meal plan on site for lunch and dinner	• • • •	— — — —	— — — —	May be possible	— — • —
Sonoda	—	•	—	•	•	•

Contract length and costs	Contract*			Costs in 2025 (NZ\$)				
	Contract length	One semester	Summer stay	Residential fee (power incl.)		Deposit <sup>†</sup>	Annual carparking fee	Payment frequency <sup>^^</sup>
Hall of Residence								
<b>Campus Houses</b> King single room Queen room	48 or 52 weeks	•	—	48 \$12,624 \$13,632	52 \$12,844 \$13,884	\$800 <sup>†</sup>	—	Fortnightly
<b>Hayashi</b> King single room (bathroom 2:5) Double room (bathroom 2:5) King single room (bathroom 1:2) <sup>#</sup> Double room (bathroom 1:2) Double ensuite room (own bathroom)	48 or 52 weeks	•	—	48 \$13,728 \$14,304 \$14,304 \$14,880 \$15,408	52 \$14,040 \$14,612 \$14,612 \$15,184 \$15,756	\$800 <sup>†</sup>	—	Fortnightly
<b>Ilam Student Accommodation</b> Mānuka: 6 bedroom apartments Hīnau: 3–5 bedroom apartments Kōwhai: 6 bedroom apartments Hīnau: 2 bedroom apartments	48 or 52 weeks	•	•	48 \$8,784 \$12,864 \$13,584 \$16,512	52 \$8,944 \$13,104 \$13,780 \$16,900	\$800 <sup>†</sup>	\$600	Fortnightly
<b>Sonoda</b>	48 or 52 weeks	•	—	48 \$12,288	52 \$12,480	\$800 <sup>†</sup>	\$600	Fortnightly

\* Includes term/semester breaks.

<sup>#</sup> 6 accessible king single rooms available.

<sup>†</sup> Deposit consists of an administration fee, refundable contingency fee, and residents' association fee.

<sup>†</sup> \$700 returner.

## 2025 contract lengths

- 13 January–15 December (48 weeks)
- 13 January–12 January 2026 (52 weeks)

## How to apply- second year+

### Step 1 - apply online

Complete an online application form at [canterbury.ac.nz/accommodation](https://canterbury.ac.nz/accommodation)

Please indicate if you are a new student (new to UC) or a returning student (currently living in a hall).

### Step 2 - check if a reference is required

New student only

[canterbury.ac.nz/life/accommodation/halls-of-residence/about-uc-halls-of-residence/applying-for-a-hall-of-residence/apply-for-a-hall-of-residence](https://canterbury.ac.nz/life/accommodation/halls-of-residence/about-uc-halls-of-residence/applying-for-a-hall-of-residence/apply-for-a-hall-of-residence)

Full year applications will be prioritised over Semester 1. Any student unable to be offered will be automatically placed on a General Waitlist - see page 21.

Summer accommodation - see page 21.

# Kōwhiringa anō | Other options





# Couples and families



## We have options for couples and families.

Self-contained units are offered at Hayashi, Sonoda, and University Hall. Please note these options are located within existing residential facilities.

One and two-bedroom Campus Houses are located on the perimeter of the campus and are suitable for couples and families with 1-2 children.

Students with larger families will need to rent privately on arrival ([see page 30](#)). Please ensure you book childcare early, if required, as places are limited.

All units are for 52-week contracts.

Couples and family accommodation	Residential Fee (2025)	Deposit*
<b>Campus Houses</b>		
Studio unit x 2 (couples only)	\$17,004	\$600
1-bedroom unit x 7 (couples only)	\$17,628	
2-bedroom house x 8 (family)	\$24,596	
<b>Hayashi</b> (couples only)		\$800
Studio unit x 10	\$19,864	
<b>Sonoda</b> (couples only)		\$800
1-bedroom unit x 4	\$22,152	
<b>University Hall</b> (couples only)		\$600
1-bedroom unit x 3	\$20,644	

\* The deposit consists of a \$300 administration fee, \$200 residential life fee (Hayashi/Sonoda only), and \$300 refundable contingency fee.

## How do I apply?

Complete an application at [canterbury.ac.nz/life/accommodation/halls/apply](https://canterbury.ac.nz/life/accommodation/halls/apply)

Select your arrival level of study as a couple/family and the term “**Couples/Family Accommodation**”. You will be asked to select a room type rather than a location as accommodation is limited.

For private renting options, please refer to the Accommodation Services website.

### Te Ratonga Nohonga Accommodation Services

Waea: +64 3 369 3569  
 Īmēra: [accommodation@canterbury.ac.nz](mailto:accommodation@canterbury.ac.nz)  
[canterbury.ac.nz/life/accommodation/couples-and-families-accommodation](https://canterbury.ac.nz/life/accommodation/couples-and-families-accommodation)

# Flatting and homestay

You may prefer to live off campus by renting privately or in the welcoming environment that comes with staying with a local family.

## Flatting

### Where to live

There are many flats close to UC in suburbs such as Addington, Avonhead, Bryndwr, Burnside, Fendalton, Ilam, and Riccarton. Living further away is also easy as there are many direct bus routes to campus.

[metroinfo.co.nz](http://metroinfo.co.nz)

### Find a flat

Useful resources for finding a place includes:

- UC Guide to Flatting [canterbury.ac.nz/life/accommodation/flatting-in-private-rentals](http://canterbury.ac.nz/life/accommodation/flatting-in-private-rentals)
- Studentpad [canterburystudentpad.nz](http://canterburystudentpad.nz)

### Costs

Rent can range from \$465 for a two-bedroom flat to \$1,229 per week for a five+ bedroom house. ([tenancy.govt.nz](http://tenancy.govt.nz))

You will need to budget for set-up costs:

- up to four weeks' rent as bond
- one or two weeks' rent in advance
- Furniture and whiteware
- power, and internet

As well as ongoing power and internet costs, budget for contents and liability insurance, food, and personal expenses.

### Before you rent

Make sure you visit the property, make an inspection with your landlord, and view an insulation statement before signing a Residential Tenancy Agreement.

To give yourself time to find a place, you should arrange temporary accommodation for at least two weeks when you first arrive in Ōtautahi Christchurch.

[canterbury.ac.nz/life/accommodation/temporary-accommodation](http://canterbury.ac.nz/life/accommodation/temporary-accommodation)



### Healthy homes standards

The healthy homes standards introduce specific and minimum standards for heating, insulation, ventilation, moisture and drainage, and draught stopping in rental properties.

[tenancy.govt.nz/healthy-homes](http://tenancy.govt.nz/healthy-homes)

### Rights and responsibilities

Renting comes with rights and responsibilities. Contact Te Ratonga Nohonga | Accommodation Services or Tenancy Services for information and advice, see [tenancy.govt.nz](http://tenancy.govt.nz)



## Homestay

UC has two contracted homestay providers to manage your application and placement process. At least two weeks' notice is required to make a placement. Homestays are available throughout Christchurch offering a diverse range of family structures and environments.

Living with a local family supports international students, in particular, to become familiar to a new culture, language,

climate and lifestyle. We encourage all international students under 18 on arrival to apply for UC-approved homestay accommodation.

Host families undergo an inspection, interview, and background check to ensure they are suitable to host UC students and are compliant with the Education (Pastoral Care of Tertiary and International Learners) Code of Practice 2021.

The Education (Pastoral Care of Tertiary and International Learners) Code of Practice 2021 is designed to guide institutions in their practice, and to protect international students when they study in Aotearoa. UC is a signatory to the Code and is required to meet the standards set by the Aotearoa government.

### UniLife

UniLife is a free year-long mentoring programme for first-year undergraduate students living off-campus.

UniLife connects you with a range of academic and social opportunities to ensure a supportive, fun and enriching start to your UC journey.





# How can I finance my stay?

UC offers scholarships and other financial assistance to help pay for your accommodation.

## Scholarships

For further information on scholarships, search “UC Scholarships” on our website.

### Helen Macmillan Brown bursaries

Up to six \$2,500 bursaries exist for female students who reside or intend to reside in a UC-affiliated hall of residence for the duration of the bursary (1 year). Applications due **15 August**.

[canterbury.ac.nz/study/getting-started/scholarships](https://canterbury.ac.nz/study/getting-started/scholarships)

### Go Waitaha Canterbury Scholarships

Up to 90 \$15,000 scholarships towards halls fees, and educational development programmes for students from outside greater Christchurch.

### Helen Macmillan Brown Bursaries

Up to ten \$2,500 scholarships to support female students residing in a hall affiliated to UC.

Applications due **7 August**. For further information on scholarships, search “UC Scholarship” on our website.

### Hall-specific scholarships

Arcady Hall, College House, and Rochester and Rutherford Hall all offer scholarships. A scholarship could be for a student applying for accommodation or a resident living on site. For further information, please view each hall's website. Applications are made directly to the hall.

[canterbury.ac.nz/life/accommodation/halls-of-residence](https://canterbury.ac.nz/life/accommodation/halls-of-residence)

#### Karahipi | Scholarships

Waea: +64 3 369 4900

Īmēra: [scholarships@canterbury.ac.nz](mailto:scholarships@canterbury.ac.nz)

[canterbury.ac.nz/study/getting-started/scholarships](https://canterbury.ac.nz/study/getting-started/scholarships)



### Other scholarships

There may be further scholarships available through agencies such as:

- [generosity.org.nz/giv-me](https://generosity.org.nz/giv-me)
- [teachnz.govt.nz/studying-to-be-a-teacher/scholarships](https://teachnz.govt.nz/studying-to-be-a-teacher/scholarships)
- [universitiesnz.ac.nz/scholarships](https://universitiesnz.ac.nz/scholarships)
- [careers.govt.nz](https://careers.govt.nz)
- [moneyhub.co.nz](https://moneyhub.co.nz)
- Manaaki Scholarship (offered by NZ Government for students from eligible countries) [nzscholarships.govt.nz](https://nzscholarships.govt.nz).

Check with your school, careers advisor, or agent.

## Hoto Akoranga | Study Link

If you are a citizen of Aotearoa or have been living in New Zealand with a residence class visa for three years, you may be eligible for a Student Loan to help pay for your compulsory course fees, course-related costs, living costs; or a Student Allowance to help pay for your living costs.

### studylink.govt.nz

A Student Loan or Allowance will not cover all your accommodation costs. For halls of residence, you will be required to pay your deposit and first instalment from your own savings. If you are an international student, you will not be eligible.

## UCSA advocacy and welfare

The UCSA Advocacy and Welfare Team is a free confidential service by a team of passionate and dedicated people who are committed to student wellbeing, supporting academic progress, and the student experience. Services provided include advocacy, budget planning, Foodbank, Hardship Grants, Medical Prescription Grant, and a subsidised dental service.

[ucsa.org.nz/support](https://ucsa.org.nz/support)

## Insurance

It is your responsibility to arrange contents insurance for your personal possessions, and to protect you from liability while you are living and studying away from home. Shop around and get quotes:

[moneyhub.co.nz/contents-insurance.html](https://moneyhub.co.nz/contents-insurance.html)

International students must also have medical and travel insurance that meets minimum requirements for the duration of study. Studentsafe University Insurance is UC's default insurance provider.

[canterbury.ac.nz/study/getting-started/study-and-living-costs/insurance-for-international-students](https://canterbury.ac.nz/study/getting-started/study-and-living-costs/insurance-for-international-students)

# UC Campus Map



Accessible Parking



Bus Stop



Café or Bar



Closed Temporarily



Community Garden



Cycle Stand



Electric Vehicle Charger



Heat and Eat



Help Point



Information Board



Library



Link Parking



Pay by Plate Parking



Permit Parking



Road Closed



Security



Student Services Centre  
Te Pātaka



Walking times



Faculty of Arts



Faculty of Education



Faculty of Engineering



Faculty of Health



Faculty of Law



Faculty of Science

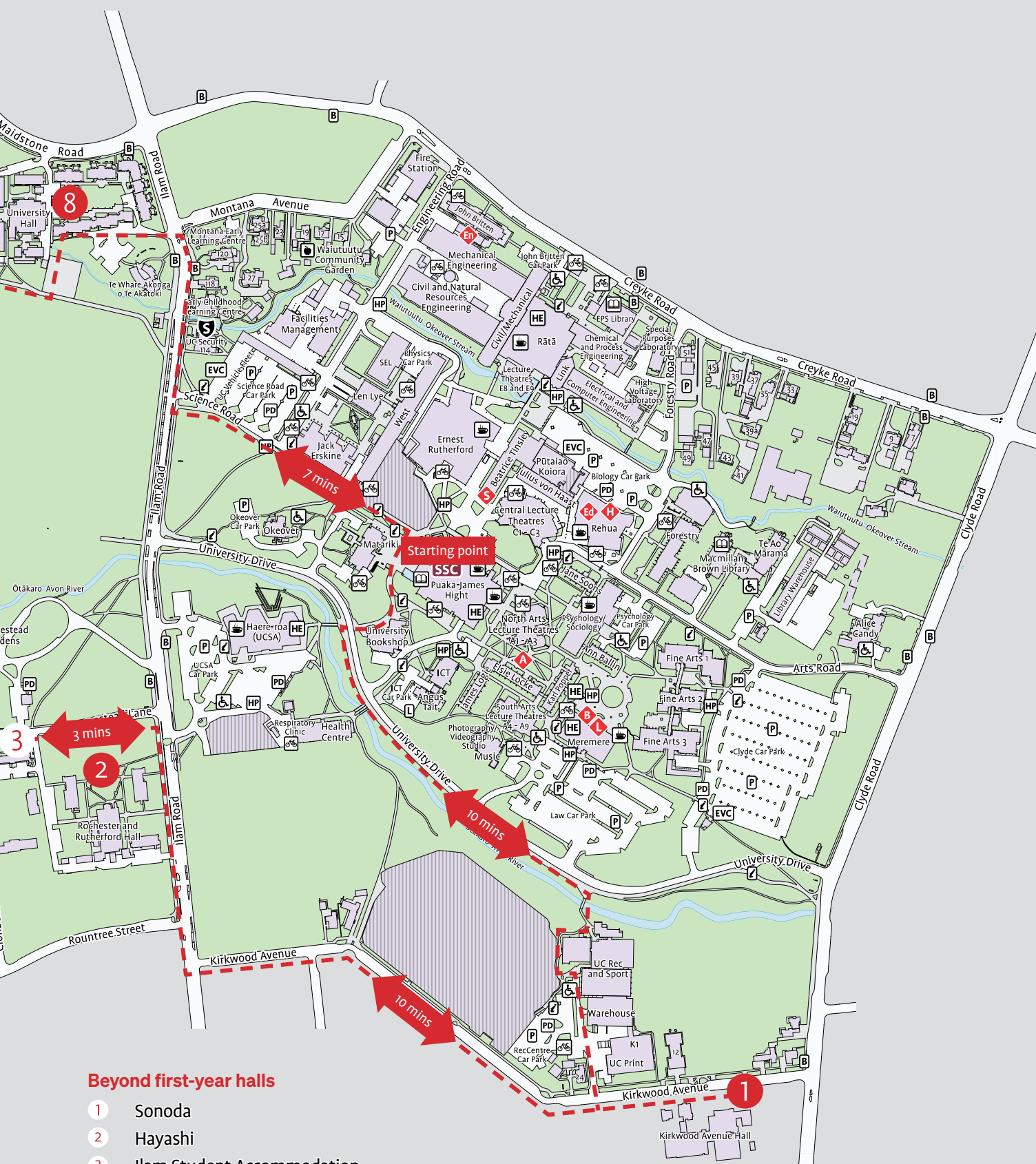


UC Business School

**All first-year halls on campus are available to tour**

- ① Kirkwood Avenue Hall
- ② Rochester & Rutherford
- ③ Ilam Student Accommodation
- ④ Tupuārangi (under construction)
- ⑤ Tupuānuku
- ⑥ Arcady Hall
- ⑦ College House
- ⑧ University Hall





Campus Houses are located around the perimeter of the campus on Creyke Road, Kirkwood Avenue, Clyde Road and Waimairi Road.

# Rā Tōmene Open Day

**Book your tour to explore the  
hall options.**

**Discover degrees and courses.**

**Experience our amazing campus.**

---

**5 September 2025**  
**Book Now**

**For more information, visit  
[canterbury.ac.nz/openday](https://canterbury.ac.nz/openday)**

---