



*CONNECT. THRIVE.*



**A GUIDE**

**to UC's**

**"Halls without walls"**





# ABOUT UNILIFE

**Our mission is to create a vibrant community where students can thrive and build strong connections with the university and their peers.**

**UniLife fosters meaningful relationships among students and delivers engaging events each week that showcase the exciting and dynamic experience of a UC student!**

**Since 2017, UniLife has been supporting off-campus students to ensure they feel just as connected and involved as those living in student accommodation.**

**With a community of over 500 students in 2025, UniLife has grown into UC's "Halls Without Walls". What began as a support network has evolved into a thriving first-year student community. We spark friendships, foster belonging, and open doors to the many opportunities that UC has to offer!**







**NACHO AVERAGE CULTURE NIGHT**

GAMES - FOOD - DRINK  
MON 4<sup>TH</sup> AUGUST | 4-6 PM  
@ REHUA 226

UNILIFE HOMEBASE E'S EVENT!

SPECIAL EDITION  
CANTERBURY \* THE TIMES \* TIMES

## STOLEN MASCOT

HAVE YOU SEEN KAPPA SIGMA'S MASCOT?

**EVENT INFO:**

The missing will be found by you, interested fraternity leaders, who will help to discover the culprit of Kappa Sigma's stolen mascot.

**Event:** Who Stole the Mascot?

**Date & Time:** Thursday 28th July from 4-6pm

**Location:** UCL Campus, Rehua 226

Sign up below via the event link. Catering provided.

**A** serious meeting of our six campus fraternities to discuss the mystery of who stole Kappa Sigma's mascot. Solve the mystery and you will be awarded a clone. But afterwards, will be hosted in celebration.

UNILIFE OFF-CAMPUS EVENT

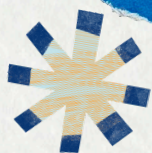
## HOT POOLS TRIP

HE PUNA TAIMOANA  
NEW BRIGHTON HOT POOLS

lock-in ☐

relaxing ☒

DATE: MONDAY 28<sup>TH</sup> JULY  
TIME: 4:30 - 8:30PM  
ENTRY FEE, TRANSPORT, KAI & GOOD VIBES COVERED



# JOINING UNILIFE

**Whether you are fresh out of high school, an international student new to Aotearoa | New Zealand, a mature student here for a career change, or returning from a gap year (or two), UniLife is the place for you!**

☐

**First year at UC?**

☐

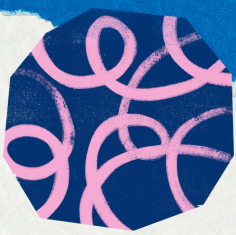
**Starting your  
undergraduate studies?**

☐

**Living outside of the  
halls in 2026?**







***Ticked all three?  
Waiting on a 2026 halls offer?***

***Stay in the loop about  
2026 by scanning now!***





# OUR TEAM



Our team is here to support you through your first year at university. With 25 passionate student leaders who each have a wealth of knowledge and experience about UC under their belt, you will always have someone to answer your questions.

From navigating campus and finding the best spot for a coffee, to understanding your timetable and giving you the inside scoop about UC – they are here to help you make the most of your first year!

These superstars are the team who you'll see at all UniLife events. They plan and facilitate activities making sure everyone is involved and connected! With their creative minds, fun is guaranteed at all of our events.

They've been in your shoes before and know exactly what it feels like to be new and adjusting to life at uni. Think of them as your go-to support crew, ready to help you feel at home at UC.







# EXPLORE YOUR UNI LIFE

Having a space to unwind and relax with friends amidst studying is important! That's why the UniLife team runs events every week for you to get involved with.

Learn about our different events below and check out our socials to see all the fun unfold!

## Common Room



- Once a week
- Snacks + hot drinks
- Fun activities and relax
- Interact with UC clubs!

## Kā Led Events



- Once a fortnight
- New activities to try!
- Win special prizes
- Get amongst the action

## Big Cohort Events



- Once/twice a term
- Themed by time of year
- UniLife's biggest events!
- Prizes up for grabs

## PALS Study Buds



- W6 & W12 each semester
- Course Q&A, get support
- Dedicated study space
- Bring your friends!





# LIVING IN ŌTAUTAHĪ

**Independence, affordability and freedom are just some of the reasons why students choose to live outside of the halls of residence in Ōtautahi | Christchurch.**

**Neighbourhoods like Ilam, Riccarton and other nearby suburb areas are a short walk/bus/bike to campus and the city. These communities offer the perfect mix of convenience and access to student-life essentials!**

**The opportunity to embrace ‘real-world living’ is a key part of the student journey; making new friends, forming connections, developing life skills, and becoming an active member of the community.**

**Living outside the halls also allows students to immerse themselves in the wider city, exploring Christchurch’s vibrant food scene, outdoor activities, and cultural events. For many, this balance between independence and connection is what truly makes the university experience unforgettable.**

**Residing outside of the halls isn’t just a living arrangement in Ōtautahi – it’s a lifestyle and experience that shapes your journey at UC!**







# UNI-LIFE IN ŌTAUTAHĪ





# KEEP UP TO DATE!



**Want to know more about our events?**

**Keen to see what all the hype is about?**

**Check out our socials! Or email us for more info: [unilife@canterbury.ac.nz](mailto:unilife@canterbury.ac.nz)**



**Follow us on  
Instagram!**



**Like us on  
Facebook!**







# THANK YOU

for reading and we hope  
to see you next year! :)





**Learn more about  
UniLife here!**

