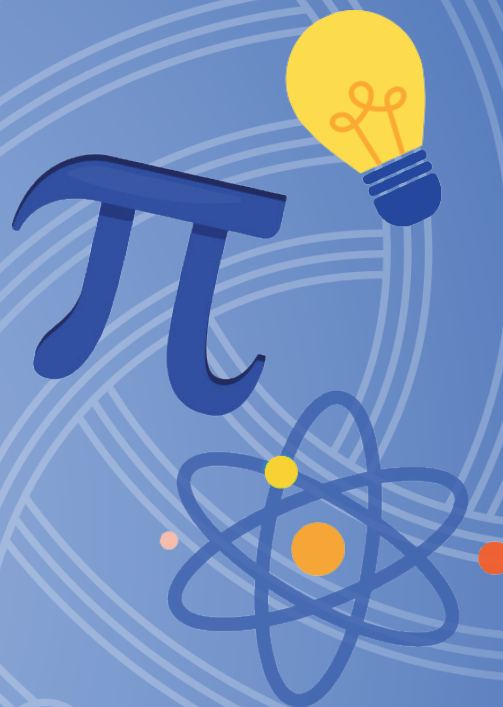


# TAIOPENGA RAPUARA CAREERS FAIRS 2026

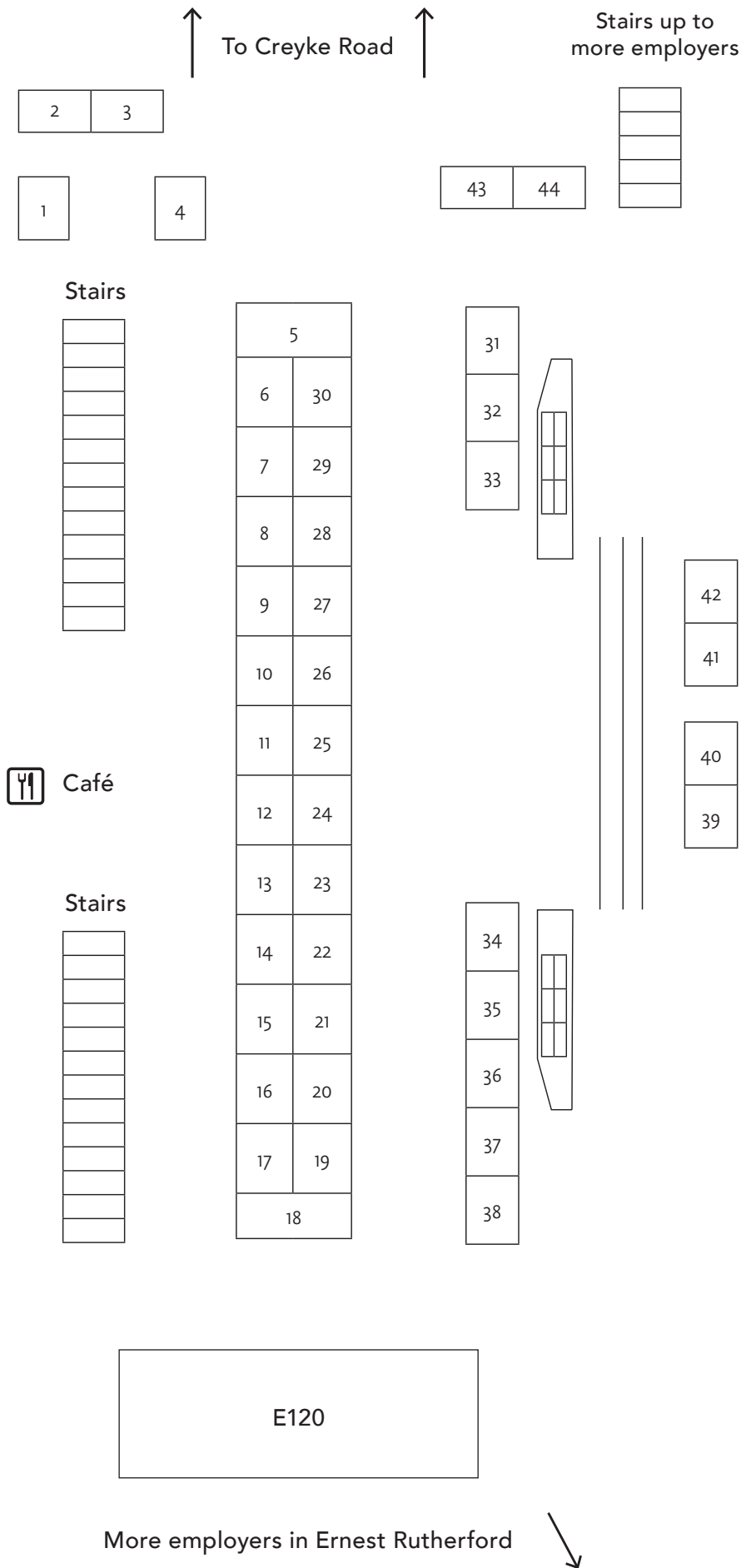


## STEM Careers Fair

Tuesday 12 May

Rātā & Ernest Rutherford

# Rātā Floor Plan (Floor 1)

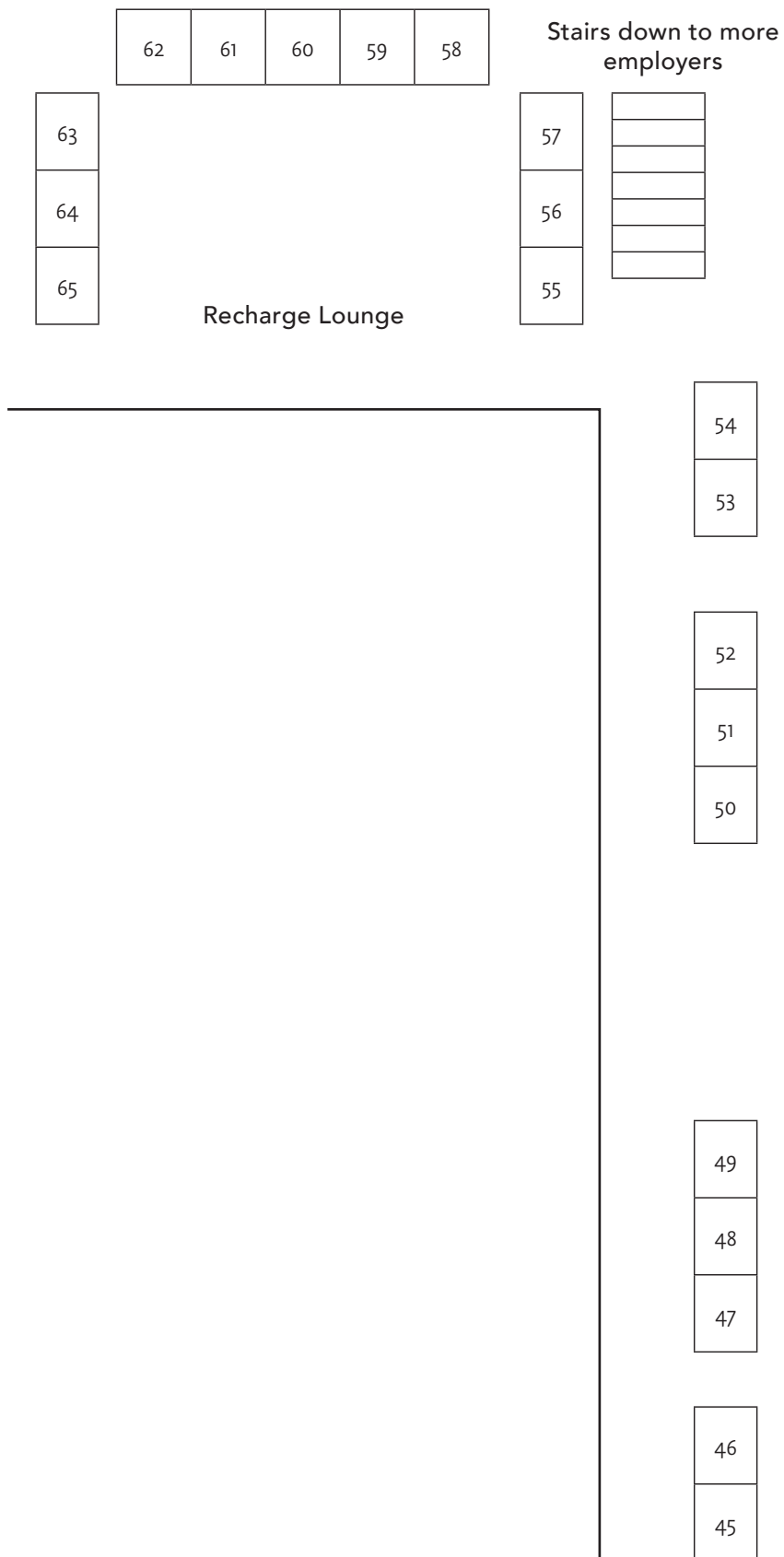


# Rātā Floor 1 Booth Allocations (alphabetically)

<b>Booth</b>	<b>Organisation</b>
4	Allied Telesis Labs Ltd
5	Atlassian
28	BCD Group Ltd
38	Beca
2	BG&E Consulting Limited
30	BioOra
16	Clarus
11	Cook Costello
31	Cortek Limited
7	Cuttriss Consultants
26	Davis Ogilvie & Partners Ltd
24	Dunning Thornton Consultants
40	Eagle Technology
15	Egis
8	Engineering Design Consultants Ltd
3	Enphase Energy
13	Fast Enterprises, LLC
43	Fulton Hogan Limited
44	Hawthorn Geddes
39	Hilti New Zealand Limited
33	Holmes

<b>Booth</b>	<b>Organisation</b>
23	Hynds
25	IMC Trading
9	Initia Ltd
27	Inovo
32	Institute of Public Works Engineering Australasia (IPWEA)
34	Jade Software
37	Kainic Medical Communications Ltd
41	Lutra Limited
42	MainPower
29	Nemesys Limited
17	Octa Project Management
12	Pattle Delamore Partners
20	Richards Consulting Engineers
21	Rio Tinto
10	RML Machinery Ltd
35	Robert Bird Group
18	Silvester Clark Ltd
22	Southbase Group
36	The Chartered Institute of Building
14	Trinder Engineers
19	Waimakariri District Council
6	Worley New Zealand Limited
E120	Future Career Pathways at UC

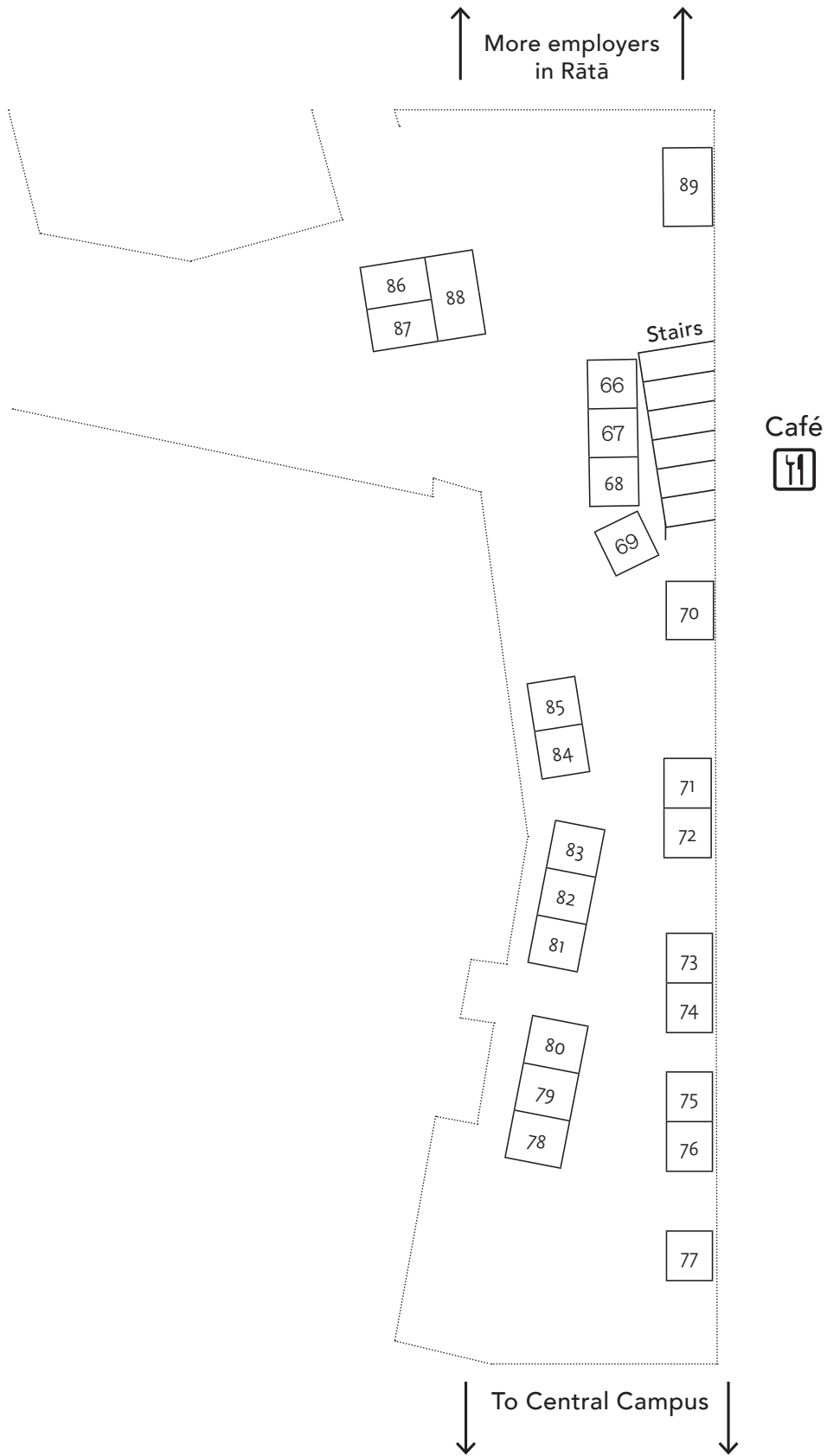
# Rātā Floor Plan (Floor 2)



## Rātā Floor 2 Booth Allocations (alphabetically)

<b>Booth</b>	<b>Organisation</b>
60	AECOM
62	Apex Water Ltd
52	Babbage Consultants
50	Danone
51	Downer
63	FDM Group
48	Fletcher Construction
53	GHD
57	HEB Construction
55	KiwiRail
47	Kotahi Engineering
61	Maven
58	New Zealand Defence Force
46	OpenStar Technologies
59	Orion Health
64	Pocket - structural engineering
45	Stantec
54	Synlait Milk
65	Tonkin and Taylor
56	Trimble, Inc.
49	Unison Networks Ltd

# Ernest Rutherford Floor Plan



# Ernest Rutherford Booth Allocations (alphabetically)

<b>Booth</b>	<b>Organisation</b>
83	Aurecon
75	Catalyst.Net
77	Contact Energy
66	CWF HAMILTON & CO LIMITED (HamiltonJet)
81	Dawn Aerospace Limited
80	DHC Consulting Group Ltd
68	Enatel
73	ENGEO
86	Ergo Consulting Ltd
89	Fisher & Paykel Healthcare
79	FRAMECAD Ltd
74	Frequency
78	Isaac Construction Limited
84	Kami Holdings Ltd
69	Klohn Crippen Berger
71	Lumin
85	OceanaGold
88	Optiver
87	Patersons
67	Powerco
76	Structex
70	Transpower NZ Ltd
72	WSP New Zealand
82	Wyma Engineering

# Rātā Floor 1 Exhibitors

## Future Career Pathways at UC



Postgraduate study at UC can help advance your career by deepening your understanding in your current field or enabling you to pivot into a new area while adding more tools to your kete. It offers the chance to build advanced knowledge, research experience, and specialised skills that employers value. It's an investment in your future that opens doors to a wider range of career opportunities.



## Allied Telesis Labs Ltd



Founded in 1987 and with offices worldwide, Allied Telesis is a world class leader in delivering IP/Ethernet network solutions to the global marketplace. We create innovative, standards-based networks that seamlessly connect people, applications and things. In Christchurch, New Zealand, Allied Telesis Labs is the largest research and development centre of a worldwide company at the forefront of the networking technology industry. We have a large team of highly-skilled professionals who imagine, design and create dynamic, cutting-edge products. We employ a range of people across many different roles to manage and support our core business. We have staff in the departments of Customer Support, Documentation, HR, Administration, and Finance, with the majority of roles in software development and system testing.



## Atlassian



Atlassian is where bold ideas become reality and teamwork knows no limits. We're the brains behind tools like Jira, Confluence, and Trello - platforms that empower millions of teams around the globe to dream big, move fast, and build what's next. From our Aussie roots to a worldwide community, we're passionate about breaking down barriers, sparking innovation, and making work more human. At Atlassian, we don't just build software - we ignite collaboration, celebrate curiosity, and champion change. Ready to unleash your team's full potential? Let's do it, together.



## BCD Group Ltd



BCD Group is a locally owned and operated consultancy that is passionate about creating value for our clients. We are more than engineers and planners, we are innovators helping to shape New Zealand's built environment. We are looking for dynamic students who ask questions, challenge ideas, and are passionate about learning. The students who balance university with work and teams sports, have a competitive nature, the ones who are up for a good laugh and enjoy a social occasion. Our Intern & Graduate programmes give you hands-on experience in your chosen discipline. You will work on real projects, collaborate with industry experts, and grow in a culture that values curiosity and continuous development. If you are ready to make an impact and learn every step of the way, join us!



## Beca



Beca is one of Asia Pacific's largest independent advisory, design and engineering consultancies. After a century of operation, we have grown from a family-owned business to one of the most progressive, client-centric professional services consultancies in our region. We have more than 4,000 employees in 24 offices around the world and have delivered projects in more than 70 countries.



Which faculty students are we looking for?



All students



Arts



Business



Engineering



Health



Law



Science

BG&E Consulting Limited



BG&E is a civil and structural engineering consultancy, celebrated for our innovative, award-winning designs that prioritise practicality and constructability.



BioOra



BioOra is New Zealand's first Chimeric Antigen Receptor (CAR) T-cell manufacturing company, developing advanced cell and gene therapies to improve outcomes for patients with cancers like B-cell non-Hodgkin lymphoma. With our headquarters in Wellington and a new state-of-the-art manufacturing facility under construction in Christchurch's Te Papa Hauora Health Precinct, we are building local capability to deliver treatments closer to home. Our mission is simple: "cell therapy for every patient in need", and we are currently manufacturing for a Phase II clinical trial while advancing toward large-scale commercial production, bringing us closer every day to making that mission reality.



In Christchurch, our entry-level roles are primarily within Production, Quality Control (QC) and Quality Assurance (QA), supporting the manufacture of CAR T-cell therapies in a regulated GMP (Good Manufacturing Practice) environment. We expect to create around 45-50 roles as the facility becomes operational in late 2026, with opportunities continuing into 2027 and beyond.

We are particularly interested in candidates from biotechnology, biomedical science, chemistry, chemical/process engineering, and related disciplines for our Christchurch team. Ideal candidates are detail-oriented, reliable, and motivated to work in highly controlled environments where quality, precision, and patient safety are critical.

At BioOra, we're building something EPIC: a culture grounded in Excellence, Passion, Innovation, and Collaboration, with a shared commitment to going the extra mile. New team members will play a direct part in ensuring every patient-specific therapy is produced safely, consistently, and to the highest quality standards, with their work directly contributing to patient outcomes.

Clarus



At Clarus, we are proud of and passionate about what we do – safely delivering energy that keeps life moving, communities warm, businesses running and BBQs firing all over the country. Right now, that mostly comes from natural gas and LPG. Distributed over thousands of kilometres of high-tech North Island pipeline, and through our Rockgas team, delivering bottled LPG to hundreds of thousands of homes and businesses nationwide.



Cook Costello



Cook Costello is a multidisciplinary engineering consultancy with offices in Auckland, Christchurch, Wellington, and Whangārei. We deliver practical, cost-effective solutions through our integrated civil, structural, geotechnical, surveying, geophysics and land development services. Our dynamic team delivers successful outcomes on projects of every scale, from residential dwellings to major infrastructure developments.



# Rātā Floor 1 Exhibitors

## Cortek Limited



Cortek is a Kiwi owned Design and Build Process Engineering company who specialise in providing engineering design solutions for turnkey projects, primarily for the NZ dairy industry. The company was established in 2015 on the back of over 20 years' experience working in business and within the dairy sector, with a clear vision of providing local engineering support to clients in Canterbury and on the West Coast. Since then we have built up a core team of multi-discipline engineers and project managers with the experience, tools, and resources to deliver professional, efficient, and robust design solutions for our clients.



## Cuttriss Consultants



A consultancy that helps shape Aotearoa's communities through thoughtful land development and infrastructure projects. Our work brings together civil engineering, surveying, planning, and design to guide developments from early feasibility through to construction. Many students only see isolated tasks; we show you how the full project lifecycle fits together and how civil engineering decisions influence every stage.

Our projects range from residential and commercial subdivisions to transport upgrades, three-waters infrastructure, and public spaces. Students who join us get meaningful responsibilities. You'll be involved in design drafting, site visits, analysis, and problem-solving with support from experienced mentors. The aim is to help you understand why decisions are made — not just how. We look for curiosity, good judgement, and a willingness to learn through asking thoughtful questions.

If you're studying civil engineering and want experience that builds a solid foundation for your future career, we'd like to meet you. Sam and Lynette will be at the STEM Career Fair on 12 May — come and chat with us about what life is like at Cuttriss.



## Davis Ogilvie & Partners Ltd



At Davis Ogilvie, we take pride in creating a vibrant and inclusive work culture that values positivity and collaboration. We thrive on a flat structure, so every team member has the opportunity to actively engage and contribute to the decision-making process.

A key point of difference is your involvement in the lifecycle of complex multidisciplinary projects. Your work has a purpose that positively impacts our communities.

If you're enthusiastic about working in a team that is dedicated to achieving client satisfaction and project excellence, we'd love to see you at the STEM expo.



## Dunning Thornton Consultants



Dunning Thornton is a medium sized boutique structural engineering firm based in Wellington. We provide structural engineering consultancy services for projects in Wellington and throughout Aotearoa New Zealand. We have a reputation for innovative, buildable designs and a practical, can-do approach to problem solving. Our projects range from high-end residential work through to multi-storey buildings, theatres and sculptures.

We are a tightknit team, with over half our 22 staff being with Dunning Thornton for more than 10 years. We are signatories to The Diversity Agenda, an AWEC sponsor and hold a JUST label, and have one of the best gender ratios of any structural engineering firm in Aotearoa. We are looking for engineering graduates who are interested in design and who look forward to working with a wide range of people once they leave university.



Which faculty students are we looking for?

UC

A

B

E

H

L

S

All students

Arts

Business

Engineering

Health

Law

Science

Eagle Technology



Eagle Technology is a New Zealand-owned IT company representing Esri's mapping technology across New Zealand and the South Pacific. Esri technology powers maps that enable people to solve some of the region's most complex challenges. Eagle's customers span a diverse range of industries, including engineering, agriculture, central government, and local government. The Eagle team is proud to support customers in work that makes a positive difference for society and the planet. As the Esri distributor for New Zealand and the South Pacific, Eagle also delivers both foundational and innovative IT services and support. In addition, Eagle actively supports initiatives such as the GIS in Schools programme and the GIS in Conservation initiative.

S

Egis



Egis is a leading global architecture, consulting, construction engineering and operating firm. We work side by side with clients to build a more balanced, sustainable and resilient world.

E

Engineering Design Consultants Ltd



EDC is a medium-sized, multi-disciplined engineering consultancy providing clients with an innovative, reliable, friendly service and creative solutions to ensure a smooth pathway from conception to completion. We have offices on Auckland's North Shore, Whakatāne (Bay of Plenty) and in Christchurch. Our services cover structural, geotechnical, civil, environmental and fire engineering for land development and building projects large and small.

E

Enphase Energy



Enphase Energy is a global leader in solar microinverter technology, providing intelligent, safe, and reliable home energy solutions that combine generation, storage, and management. Distributed in NZ by Solar Partners NZ, they offer high-performance IQ systems and AC batteries to maximize energy efficiency, with a local support presence.

E

S

Fast Enterprises, LLC



Fast Enterprises specialise in development and installation of software for government agencies. Much of their work happens on client sites as part of the product implementation. Fast Enterprises recruit graduates who understand technical aspects of systems implementation, and the business needs of their clients. Employees participate in the full project life cycle from requirements gathering through to production support.

E

S

# Rātā Floor 1 Exhibitors

---

## Fulton Hogan Limited



Fulton Hogan delivers high-quality infrastructure to improve the lives of people and New Zealand. Every day, our 9,500+ team contributes to our purpose of creating, connecting, and caring for communities.

We're proud of our achievements, and excited about our future because the only way we're going is forward. We're committed to ensuring the work we do today will make a real difference to the lives of our people and customers, the communities they call home, and the world we live in, tomorrow. Ours is a company where everyone will find the opportunity to work with and learn alongside experienced professionals in the business, have fun and all together contribute to a better future, a future we can all be proud of.

Fulton Hogan helps build careers through our internship, graduate and scholarship programmes across New Zealand. We offer learning on-the-job experience that gives you a full view of our business and can set you up for your professional career.



---

## Hawthorn Geddes



Hawthorn Geddes Engineers & Architects Ltd is Northland's largest full service architectural and engineering practice offering proven expertise in architectural, structural, civil, geotechnical and environmental engineering.



---

## Hilti New Zealand Limited



Hilti Group is a Liechtensteiner multinational company that develops, manufactures, and markets products, services and software for the construction, building maintenance, energy and manufacturing industries, mainly to the professional end-user.



---

## Holmes



Born in Christchurch in 1956, Holmes is now spread across three continents – providing an international benchmark for technical excellence and creativity. Today, Holmes is a talented team of engineering experts across Australia, Aotearoa New Zealand, and the Netherlands, handling the most complex and innovative projects. Our team provides the highest level of professional service to our clients, building meaningful, long-term relationships along the way.

Right now, our talented team is working on landmark local, national and international projects that will lead the industry in creativity and technical excellence for years to come. Our well-established Fire Engineering, Structural Engineering, and Civil Engineering practices pioneer quality in engineering, drawing on our wide-ranging experience delivering thousands of technically challenging projects all over the world.

While we pride ourselves on our technical expertise, we also enjoy what we do, and we love working in partnership with great people on landmark projects. We are on the lookout for the next generation of Holmes civil, structural, and fire engineers (both interns and graduates).



Which faculty students  
are we looking for?



All students



Arts



Business



Engineering



Health



Law



Science

Hynds



The privately owned Hynds Group is New Zealand's premier product supplier for the management of water and water-based waste. The Group employ across New Zealand and Australia and includes concrete, metal and plastic manufacturing; product importation; distribution and trade supply. We support flexible working and offer competitive remuneration and benefits. Hynds is dedicated to providing graduates with progression opportunities with many of our previous graduates now holding key senior positions within the business. While we know your grades are important, we are more interested in your attitude and potential.



**We are looking for graduates with the following skills and attributes:**

- A civil or mechanical Degree
- or a Supply Chain / Logistics Degree
- or a Commerce / Business (Sales, Operations) Degree
- A practical and commercially focused mind with a strong work ethic
- Ambition, drive, energy and the desire to learn and grow professionally
- Forward thinkers and problem solvers who innovate by challenging traditional ways of thinking.

IMC Trading



IMC is a global trading firm powered by a cutting-edge research environment and a world-class technology backbone. Since 1989, we've been a stabilizing force in financial markets, providing essential liquidity upon which market participants depend. Across our offices in the US, Europe, Asia Pacific, and India, our talented quant researchers, engineers, traders, and business operations professionals are united by our uniquely collaborative, high-performance culture, and our commitment to giving back. From entering dynamic new markets to embracing disruptive technologies, and from developing an innovative research environment to diversifying our trading strategies, we dare to continuously innovate and collaborate to succeed.



Initia Ltd



Initia is a specialist geotechnical engineering consultancy that provides design, advisory and construction observation services for building, infrastructure and earthworks projects. Initia was established in 2018 by a group of four senior geotechnical specialists all with a passion to challenge the norm in professional engineering service delivery. We set out to differentiate ourselves from others by delivering value outcomes to our Clients, by investing extra energy and thought into projects and above all, by being responsive. Our company name was derived from our core belief that we must always use our initiative, that each project has a different set of requirements, conditions and challenges, and that we should always deliver more than just what we have been asked for.



Inovo



With a team of 90+ talented people, Inovo has offices in Christchurch and central Auckland and provides services in land development (including civil engineering, surveying and resource consenting), project management and project planning and programming.



We have a focus on horizontal and vertical infrastructure, three waters, brownfield and greenfield development, sustainable practices, design, modelling and contract management for land development, infrastructure, and building services projects.

Inovo has been integral to and is currently involved in many of New Zealand's most significant projects. We form longstanding relationships with our clients and genuinely enjoy adding value to their project.

We're always looking for passionate and talented people who want to make a difference. We offer great career development opportunities and we are proud of our team approach and culture - built around exciting project opportunities, open communication and team collaboration. Benefits include involvement in ongoing learning and development, social events and participation in professional organisations, along with competitive salaries and rewards.

# Rātā Floor 1 Exhibitors

## Institute of Public Works Engineering Australasia (IPWEA)



IPWEA Aotearoa provides the New Zealand public works sector with globally recognised and renowned resources, professional development and career advancement, networking, advocacy, and community recognition. With a comprehensive offering for our members, IPWEA Aotearoa supports the growth, development, and excellence of the industry in New Zealand.



## Jade Software



Jade Software (Jade Platform, ThirdEye and MADCAP) is a New Zealand based SaaS company working at the intersection of technology, engineering and infrastructure. Head Office in Christchurch, with teams based in New Zealand, Australia and the UK; we partner with public and private sector organisations to solve complex, real world problems using smart, practical solutions. We offer internships, graduate roles and early career opportunities for students and recent graduates from disciplines such as software engineering, computer science, information systems, data and analytics, product development, and digital technologies. We look for people who enjoy problem solving, are curious about how systems work, and want to apply their technical skills to meaningful projects. As a student or graduate, you'll get hands on experience using Jade combined with modern real world tools and technologies. Our teams work across projects focused on anti money laundering (AML), financial crime prevention and supply chain management, delivering solutions in regulatory technology, data analytics, system integration and risk based decision making. You'll be working on live projects and learning alongside experienced professionals through mentoring and on the job support. Across Jade, ThirdEye and MADCAP, we value collaboration, innovation and continuous improvement. Our organisation holds recognised industry accreditations and is trusted to deliver high quality outcomes. If you're keen to build your technical capability while contributing to projects that have real impact, come talk to us at the expo.



## Kainic Medical Communications Ltd



Kainic Medical Communications is a multi-award-winning medical communications company providing services to pharmaceutical companies worldwide, with a global reputation as thought leaders around ethical physician-industry interactions. We help our clients present complicated clinical data in easily understandable and engaging formats, such as manuscripts, posters, slide decks and infographics as global preferred suppliers to some of the biggest names in the pharmaceutical industry. Our reputation for accuracy also sees us editing and data-checking materials on behalf of our clients. Our team provide a pivotal link between the scientific, medical and commercial worlds for our clients by exercising academic integrity, while demonstrating commercial street-smarts, a drive for excellence, a flexible and client-focused attitude and the ability to work collaboratively.



## Lutra Limited



Lutra's purpose is to protect water, the environment and people's health by delivering smarter solutions. We've got one of the largest water process engineering consultancy teams in the country, and we operate the market leading compliance software for water reporting within NZ. Come along to hear what it's like working primarily with water and wastewater in our Process Engineering team, and how we provide solutions for managing the most important natural resource. We want to talk to you about what it's like working for Lutra and how you can apply for one of our graduation positions for 2027. Food, drink, and prizes available!



Which faculty students are we looking for?



All students



Arts



Business



Engineering



Health



Law



Science

MainPower



MainPower is a consumer-owned electricity distribution business powering North Canterbury. Based in Rangiora, our team maintains and develops the local electricity network supporting more than 45,000 homes and businesses. We offer paid summer internships and a two-year Graduate Programme across engineering, IT, business and related disciplines. Students gain hands-on experience on real projects while contributing to a smarter, more resilient energy future.



Nemesys Limited



At Nemesys we design, integrate and support industrial automation and controls systems in factories that reduce downtime, improve efficiencies and give operators confidence in their manufacturing processes. We currently have three branches across NZ, Hamilton, Taranaki and Invercargill working in Dairy, Food and Beverage, Wood Mill, Oil and Gas industries. We have a graduate program that we look to recruit high performing students into becoming highly skilled Engineers. We promote a culture of integrity, teamwork, excellence, respect and balance.



Octa Project Management



Octa is a privately owned New Zealand company specialising in independent project management and management consulting services. Founded in 1973 by eight University of Canterbury Engineering and Business Management graduates, Octa emerged from a shared vision to improve the management of business systems and construction projects.

Today, Octa delivers development and renewal projects across commercial, residential, education, health and aged care, local and central government, heritage and seismic, industrial and infrastructure sectors. The company manages all phases of a project ó from feasibility through to completion ó and is experienced in navigating complex technical, stakeholder and delivery environments. With over 100 staff across twelve locations, including Auckland, Hamilton, Tauranga, Napier, New Plymouth, Palmerston North, Wellington, Nelson, Christchurch, Dunedin, Queenstown, and Brisbane.

Octa is seeking Graduate Project Managers to join teams in Auckland, Hamilton, and Wellington. Graduates work alongside experienced project managers, supporting projects from initial planning to final delivery. The role offers exposure to a wide range of sectors, including infrastructure, education, healthcare, commercial, residential, industrial, and public projects. Staff are supported to pursue professional development through the Project Management Institute of New Zealand and internationally recognised certifications such as PMP, CAPM and PRINCE2.



Pattle Delamore Partners



Our team of experts delivers a range of innovative solutions that support our clients' environmental challenges, covering everything from air and land to water-related projects.



# Rātā Floor 1 Exhibitors

---

## Richards Consulting Engineers



**RICHARDS**  
CONSULTING ENGINEERS

Richards Consulting Engineers is a well-established structural and civil engineering consultancy with offices throughout New Zealand, specializing in both residential and commercial engineering projects.



---

## Rio Tinto



**RioTinto**  
NZAS

Are you a motivated student who wants to contribute to lasting change? Help us shape the future of our company and industry. Our two-year graduate program gives you the tools and skills to innovate and invent – to challenge the way we do things and help us find better ways to produce materials the world needs.



---

## RML Machinery Ltd



**RML**  
PRECISION · PERFORMANCE

RML is an innovative engineering company based in New Zealand, with operations across both New Zealand and Australia. We specialise in designing and delivering advanced automation solutions for the food and dairy industries, helping some of the region's leading producers improve efficiency, safety, and performance through smart technology.

We are proud to be recognised as a leader in innovation, having won the 2025 Waikato Business Awards for Innovation as well as the Supreme Business Award. We were also a finalist in the 2024 Best Places to Work NZ Awards, reflecting our strong focus on people, culture, and career development.

We are currently seeking enthusiastic Mechanical and Mechatronic Engineering students who are passionate about problem-solving, hands-on design, and cutting-edge automation. Ideal candidates will have an interest in mechanical systems, robotics, control systems, and practical engineering applications. Our projects range from high-speed packaging and processing automation through to exciting developments in Automated Guided Vehicles (AGVs), which are transforming how materials are moved within modern production environments.

At RML, students have the opportunity to work alongside experienced engineers on real-world projects that make a tangible impact across the industry.



Which faculty students are we looking for?



All students



Arts



Business



Engineering



Health



Law



Science

Robert Bird Group



Robert Bird Group, part of the Surbana Jurong Group, is a leading global consulting engineering firm delivering innovative structural and civil solutions across some of the world's most complex and high-profile projects. Our work is driven by technical excellence, creativity, and a strong commitment to sustainability. In New Zealand, our team has contributed to a diverse portfolio of landmark projects, including the Waikeria Prison Development, City Rail Link and Seascape Tower, Waipipi-Waverley Wind Farm, and the Christchurch Convention Centre.



**As part of our program, you will get to:**

- Contribute to the delivery of major industry projects and local community ventures
- Assist in the preparation of proposals, reports, and other documents
- Partner with supportive colleagues through our buddy system
- Access a range of industry events and networking opportunities
- Be part of a large and diverse community of graduates across ANZ

We promise both in-person and online training on everything from consulting with clients to managing your time effectively through our graduate development workshops.

**About You:**

- Graduates will be in their final year, or have graduated within the last 2 years
- Strong interpersonal and written communication skills
- Positive attitude and willingness to learn
- Ability to effectively manage one's time and workload
- A developed knowledge of analytical methods, tools, and principles

Silvester Clark Ltd



Silvester Clark is a New Zealand-owned structural engineering consultancy with offices in Auckland, Wellington, Palmerston North, Hawke's Bay and Christchurch. Since 1979, we've delivered structural engineering services across a wide range of projects – from commercial and residential buildings to complex industrial facilities, as well as seismic assessment, strengthening and refurbishment work. We are currently looking for Structural Engineering Interns and Graduate Engineers across all of our offices. We're looking for students who communicate well and enjoy practical, hands-on engineering.



Our teams work with industry-standard tools such as Revit, Etabs, SAP2000, SAFE and Microstran, and our early-career engineers receive mentoring, technical development and exposure to real project work on both design and construction monitoring.

Silvester Clark offers a supportive, down-to-earth team culture and great staff benefits, including a 9-day fortnight, annual wellbeing and professional development budgets, employer-paid health insurance, weekly team lunches, and paid professional memberships.

If you're looking to gain practical engineering experience and be part of a friendly, experienced team, come and talk to us at the STEM Careers Fair.

Southbase Group



Southbase is proud to offer our established cadet and graduate programme aimed at students who are interested in furthering their career in the fields of Construction Management, Engineering and Architecture. Our cadet and graduate positions provide a unique opportunity for students to gain hands-on experience in the construction industry.



# Rātā Floor 1 Exhibitors

---

## The Chartered Institute of Building



The Chartered Institute of Building (CIOB) is the world's leading professional body for construction management and the built environment. Founded in 1834, CIOB promotes excellence, ethics, and professional standards across the global construction sector.

### Why Join CIOB as a Student?

- Membership is free
  - Global Recognition - CIOB members are part of an international community across 100+ countries, respected for their commitment to quality and professionalism.
  - Career Boosting Membership - Access CPD, mentoring, networking, and over 500 annual industry events.
  - Learning & Development - Use the CIOB online library, join Tomorrow's Leaders, and engage with construction professionals at every level.
- CIOB in New Zealand CIOB maintains an established presence in Aotearoa, supporting students and professionals through its regional hubs:
- Auckland (Tāmaki Makaurau) - Active CIOB hub hosting professional networking and industry events.
  - Christchurch (Ōtautahi) - CIOB presence supporting local members and learners.
  - Wellington (Te Whanganui a Tara) - Newly established CIOB hub providing formal representation and industry connection for learners and professionals.

### Why It Matters:

Being part of CIOB connects you with global expertise while giving you localized support through NZ hubs. Whether you're studying architecture, construction management, quantity surveying, or engineering, CIOB helps you grow your skills, expand your network, and prepare for a strong career in the built environment. JOINING IS EASY Student Membership | CIOB



---

## Trinder Engineers



Over the past six years, the Trinder Group has proudly supported the development of emerging engineering talent through our summer internship programme. During this time, we have onboarded seven intern students, providing hands-on industry experience within a supportive and professional engineering environment.



Which faculty students are we looking for?



All students



Arts



Business



Engineering



Health



Law



Science

Waimakariri District Council



The Waimakariri District Council services the Waimakariri Region and its 70,000 residents for infrastructure, services, and planning. To assist in this function, the Project Delivery Unit provides engineering services to the council as an internal consultancy delivering a range of engineering work including but not limited to design for Water Services, Greenspace and Roding units, project management, hydraulic and hydrological modelling, infrastructure resiliency, consenting and development. Each year the Project Delivery Unit aims to take on 1-2 engineering interns who will join our team of 40 to assist in a range of projects over the summer. Our past interns have done work including three waters design, assisting project management, catchment analysis, GIS work, and surveying. This opportunity provides on the job learning in an engineering role and a window into what's involved at the local government level. Many of our interns go on to continue working at the council making this a great opportunity for your career and to support our people at a local level.



Worley New Zealand Limited



Worley is a global professional services company comprised of experts in energy, chemicals, and resources. We partner with customers to deliver projects and provide services across the full life cycle of their assets, from concept and design through to operations, maintenance, and decommissioning. With deep technical expertise and a strong understanding of complex project delivery, Worley supports some of the world's largest and most challenging developments. Our strength lies in our ability to bridge two worlds. On one hand, we help our customers meet today's demand for energy, chemicals, and resources that underpin modern society. On the other, we are actively supporting the transition toward more sustainable and lower-carbon energy solutions. By combining innovation, engineering excellence, and practical delivery experience, Worley enables customers to make informed decisions that balance performance, reliability, and sustainability.



# Rātā Floor 2 Exhibitors

AECOM



**AECOM**

AECOM is the world's trusted infrastructure consulting firm, delivering professional services throughout the project lifecycle - from advisory, planning, design and engineering to program and construction management.



Apex Water Ltd



Are you seeking a career with a specialist company making a difference in water & wastewater treatment? Apex Water are leaders in water and wastewater treatment with many diverse and exciting projects providing new challenges for talented people from a variety of backgrounds and experience.



Babbage  
Consultants



Babbage is a 100% New Zealand-owned, multidisciplinary professional consultancy dedicated to designing and delivering innovative built solutions across the Asia-Pacific. With almost 90 years' experience, we bring together technical excellence across architecture, engineering, infrastructure, planning, environmental science, land development and project management to help clients solve real-world challenges. At Babbage, we pride ourselves on being a "one-stop-shop". Our team of experts works collaboratively to deliver practical, sustainable and cost-effective outcomes across sectors that include commercial, community, health, education, industrial, residential, government and more. We support projects from initial concept and feasibility through to design, consenting, construction and commissioning - always focused on quality and innovation. We believe that passionate people are our greatest strength. Our culture is built on teamwork, integrity, adaptability, empowerment and continuous learning, and we provide opportunities to grow professionally in a supportive environment. Our internships and graduate programmes give early-career talent real, hands-on experience with meaningful work. If you're excited by engineering, design, planning or project delivery and want to help shape the future of Aotearoa's infrastructure and communities, Babbage is the place to start your career. 'Expressions of Interest' will be open for internships and graduate roles!



Danone



Danone is dedicated to promoting health through food, with a strong presence in New Zealand. Our key facilities in Auckland and Balclutha focus on a specialized nutrition range of products. Our Balclutha plant is particularly notable for its sustainability efforts, including a biomass boiler that significantly reduces CO<sup>2</sup> emissions. Founded in 1919, Danone has grown into a global powerhouse, operating in over 120 countries and offering a diverse range of dairy, plant-based, water, and specialized nutrition products.



Which faculty students  
are we looking for?



All students



Arts



Business



Engineering



Health



Law



Science

Downer



At Downer, our customers are at the heart of everything we do. Enabling communities to thrive is our Purpose, which empowers us to tackle significant challenges. This guiding principle shapes our transformation journey, emphasizing our commitment to making a lasting impact within communities. We firmly believe that our customers' success translates directly into our own, encapsulated in our Promise: "Our customers' success is our success"

As a leader in integrated services across Australia and New Zealand, Downer specializes in designing, building, and maintaining vital assets, infrastructure, and facilities. Our focus on customer success drives our operational excellence and innovation.

Our updated Pillars, aligning with our refreshed ambitions, reflect how we conduct business. Delivery, Relationships, and Thought Leadership remain foundational to our problem-solving approach. Moreover, we recognize the critical importance of Sustainability, ensuring that our commitment to safety is prioritized at all levels. With a proud history spanning over 160 years, Downer is publicly listed on the Australian Securities Exchange and the New Zealand Stock Exchange as Downer EDI Limited (DOW). Our workforce, totaling approximately 26,000 dedicated employees, operates across more than 700 sites, predominantly in Australia and New Zealand. Together, we strive to deliver exceptional services while fostering community growth and resilience, embodying our Purpose and Promise every step of the way.



FDM Group



We're FDM, an award-winning global business and technology consultancy. With 30+ years in technology, FDM equips you with the skills for success, whatever your degree. Going beyond theory, you'll gain expertise you can apply in the real world in our hands-on learning environment. In around three months you'll be job-ready to work on exciting projects with global clients and Australia's biggest brands, with support networks and continuous upskilling from expert coaches to fast-track your career. As a FTSE4Good-listed company committed to diversity and inclusion, FDM Group's mission is to make tech and business careers accessible to everyone. We have 18 centres globally, 2,500+ employees, and 80+ nationalities worldwide. Turn your passion into a career with unlimited opportunities from day one.



Fletcher Construction



Fletcher Construction is one of New Zealand's largest and most established infrastructure and building companies, delivering projects that shape the way communities live, move, and grow. With major hubs in Auckland, Wellington, Christchurch, and regional centres, we offer students and graduates the chance to work on meaningful projects that have a lasting impact across the country. Each year, we recruit several graduates, interns, and early career professionals across a wide range of disciplines. Our opportunities span civil, structural, environmental engineering, construction management, and quantity surveying.

We look for students who are curious, collaborative, and eager to learn. Strong communication, problem solving ability, adaptability, and a commitment to safety and sustainability are qualities that help our people thrive. In return, we offer hands on experience, industry leading mentors, and exposure to some of New Zealand's most significant projects. Our teams are proud to contribute to major national developments such as large scale highway upgrades and critical water and environmental infrastructure. Join us and help build the future of Aotearoa.



# Rātā Floor 2 Exhibitors

GHD



We're not the hair straightener company that shares our name, but we do straighten out some of the world's biggest challenges.

We're a global professional services company, committed to making energy, water and communities sustainable for generations to come. Since 1928, we've been wholly owned by our people. Today, we are 12,000+ diverse and skilled individuals working in over 160 offices across five continents - Asia, Australia, Europe, North and South America, and the Pacific region.

UC

HEB Construction



HEB Construction is one of NZ's major infrastructure companies. Starting as a family-owned civil infrastructure business in 1975, we have evolved to include expertise in major structures, now taking on large scale and highly complex projects up and down the country. We are looking for Engineering students who are keen for intern and graduate opportunities, with flexibility on location and excited about a career in civil infrastructure.

E

KiwiRail



It's an exciting time to join our organisation and we're searching for our next generation of influential and inspiring leaders to develop with us! We are looking for Engineering, ICT, Finance and Supply logistics Graduates to join our two-year Grad programme in 2027.

B

E

Kotahi Engineering



Kotahi Engineering Studio is a multidisciplinary engineering consultancy specialising in structural, civil and environmental engineering. We work across commercial and retail developments, industrial and warehouse facilities, residential and multi-residential projects, and civic, health and community buildings. With offices in Christchurch, Napier, Queenstown and Blenheim, we deliver projects across Aotearoa. We're a collaborative, growing team that values mentorship and hands-on learning, providing graduates with opportunities to build technical and professional skills and develop their careers.

E

Maven



Maven (meaning "trusted expert") is a multi-disciplinary consultancy specialising in civil engineering, surveying and land development. Lead by the three founding directors, they have built an expert team of over 160 people across over 15 offices across Australasia who share the same passion for the industry and dedication to quality engineering solutions. Maven have the capability, experience and national coverage to deliver all types of projects and have been successful in some of the largest and complex residential, commercial and industrial projects in New Zealand.

E

Which faculty students are we looking for?

UC

A

B

E

H

L

S

All students

Arts

Business

Engineering

Health

Law

Science

**New Zealand Defence Force**



A career in the Defence Force gives you real purpose. You'll work as part of a tight-knit team, protecting your whānau, your country and our environment from harm. And you'll have the honour of representing New Zealand wherever you go.

Defence Recruiting

E

S

**OpenStar Technologies**



OpenStar Technologies is pursuing fusion energy with the levitated dipole concept. They aim to deliver abundant, clean energy to the world by the 2030s.

E

S

**Orion Health**



Orion Health is a global healthcare technology company proudly headquartered in Aotearoa New Zealand, with a growing presence across eight countries and software powering health systems that manage data for tens of millions of people worldwide. We specialise in building innovative digital health solutions – from integrated Electronic Health Records and Health Information Exchange platforms to advanced analytics and patient engagement tools – that help clinicians work smarter, improve care coordination, and deliver better health outcomes for communities everywhere.

At our Christchurch office we're passionate about discovering and nurturing tech talent. We recruit for summer internships and our graduate software engineering programme, offering students hands-on experience designing and building real healthcare products alongside experienced engineers. These opportunities are ideal for students in software engineering, computer science and related disciplines who are curious, collaborative, and excited about applying their coding, cloud, and problem-solving skills to meaningful, real-world challenges.

We're looking for people with a strong foundation in programming fundamentals, eagerness to learn emerging technologies, and a mindset that thrives in a team environment. Working with us means contributing to software that truly makes a difference, from enabling clinicians to access unified health information to building analytics that help inform better decisions across health systems.

Join us at Orion Health to kick-start a career where technology meets impact, and help shape the future of healthcare for all.

E

# Rātā Floor 2 Exhibitors

---

## Pocket - structural engineering



We are a creative team of design-led Structural Engineers with a passion to bring great architecture to life through exceptionally crafted engineering. We have studios in Auckland and Christchurch and work with some of the best Architects in New Zealand, on both commercial and residential projects across the country.



---

## Stantec



Stantec is a global leader in sustainable engineering, architecture, and environmental consulting. The diverse perspectives of our partners and interested parties drive us to think beyond what's previously been done on critical issues like climate change, digital transformation, and future-proofing our cities and infrastructure. We innovate at the intersection of community, creativity, and client relationships to advance communities everywhere, so that together we can redefine what's possible.



---

## Synlait Milk



Synlait is a proud Canterbury-based dairy company that was set up to do milk differently. We combine expert farming with state-of-the-art processing to produce a range of high quality nutritional milk products that are enjoyed by millions of consumers globally.



---

## Tonkin and Taylor



Tonkin + Taylor is New Zealand's leading Environmental and Engineering Consultancy. We work on an exciting range of local and international projects, and focus on sustainably uplifting our communities. We have an incredible Early Careers programme, including a number of internship and graduate opportunities across all of our technical disciplines!



Which faculty students  
are we looking for?



All students



Arts



Business



Engineering



Health



Law



Science

Trimble, Inc.



Trimble is a technology company transforming the way the world works by delivering solutions that enable our customers to thrive. Core technologies in positioning, modeling, connectivity and data analytics connect the digital and physical worlds to improve productivity, quality, safety, transparency and sustainability. From purpose built products to enterprise lifecycle solutions, Trimble is transforming industries such as agriculture, construction, geospatial and transportation.



Unison Networks Ltd



Unison Networks is part of the Unison Group which consists of specialist companies delivering world-class electricity solutions. The Group also includes Unison Contracting, Unison Insurance, ETEL, PBA and RPS Switchgear.

Unison Networks owns and operates the network that distributes electricity to Rotorua, Taupō and Hawke's Bay and we have been proudly delivering our services for over 100 years. Our vision is to lead a sustainable energy future. This vision inspires us to innovate and enable the delivery of smart energy solutions through a dynamic, flexible and sustainable electricity system, underpinned by our values of Safety & Wellbeing, Teamwork, Excellence, Integrity and Customer Service. We are looking for passionate graduates and Summer Interns to join us in our Hawke's Bay headquarters, where you will be involved in exciting and innovative projects that deliver our vision.

Our students will get the opportunity to experience rotations through multiple business units, gaining invaluable business acumen whilst using specialist knowledge gained in their degree.

You'll get on-going support from mentors and previous graduates and will be welcomed into the social and technical sides of the company. Unison promotes a culture where our employees are valued and respected and have the chance to get involved in pioneering projects which make a real difference to improving peoples' lives with greater choice and better value, thereby achieving our purpose of enabling communities to prosper.

We encourage our employees to own their development so with a host of opportunities available throughout the Group, your future is in your hands.



# Ernest Rutherford Exhibitors

## Aurecon



Aurecon is a global engineering and infrastructure advisory company with a strong presence in New Zealand. We design, build, and operate complex infrastructure projects, from transport networks and water systems to energy solutions and smart cities.

### Who We're Looking For

We welcome students from diverse disciplines including civil, mechanical, electrical, and structural engineering, as well as environmental engineering, project management, and surveying and geomatics.

### Key Skills We Value

We seek problem-solvers with strong analytical thinking, collaboration abilities, and excellent communication skills. Technical proficiency, attention to detail, adaptability, and a sustainability mindset are essential.

### Exciting Projects

Our New Zealand teams deliver transformative infrastructure projects including transport improvements, water infrastructure upgrades, renewable energy initiatives, and urban development. We're committed to sustainable solutions that benefit communities.

### Opportunities Available

We offer internships, graduate programs, and placement opportunities providing real-world experience, mentorship, and pathways into permanent roles. Our programs develop the next generation of engineering leaders.

### Accreditations & Recognition

Aurecon is recognized as a leading employer with accreditations such as: Diversity Agenda, Te Urū Tangata, Gender Tick, Pride Pledge.



## Catalyst.Net



Catalyst helps organisations achieve more for less through the power of open source. For over 25 years, we've been a trusted technology partner to government, enterprise, education, and non-profits – delivering secure, scalable systems with full data sovereignty, no licensing fees, and freedom from vendor lock-in. At Catalyst, we are committed to supporting more aspiring open source enthusiasts who want to join our industry. That's why each year, we offer two scholarships to help future tech talent thrive. Our scholarships are designed to help you succeed in your studies by reducing the financial burden, meaning you have more time to focus on learning. The scholarship offers \$2,000 per year, for up to three years, while you are studying full-time at a University, Polytechnic or Wānanga. A paid for week internship in Wellington from mid Jan – mid Feb is also included in the scholarship.



## Contact Energy



Contact Energy are committed to a sustainable energy future for Aotearoa. This means balancing their commitment to renewable energy, while ensuring reliable access to energy for customers. Operating one of the most flexible generation fleets in New Zealand, their geothermal, hydro, and thermal plants have the country covered no matter what the weather.



Which faculty students  
are we looking for?



All students



Arts



Business



Engineering



Health



Law



Science

CWF HAMILTON & CO  
LIMITED (HamiltonJet)



HamiltonJet is a highly respected international company and market leader in marine propulsion systems, headquartered in Christchurch, New Zealand, and serving high-profile clients around the world.

With a strong reputation for engineering excellence and innovation, our products and services are trusted by boat builders, naval architects and end-users in over 120 countries.

We offer graduate roles, internships and work-integrated learning opportunities for engineering students, particularly those studying mechanical, mechatronics, electronic and electrical and software engineering. We are looking for students who are curious, practical and collaborative, with strong problem-solving skills and a passion for applying engineering theory in real-world environments.

You'll work alongside experienced engineers and technical specialists, contributing to meaningful projects across product design, testing, manufacturing, systems integration and continuous improvement, supporting some of the most advanced marine vessels in the world. You'll also gain exposure to cutting-edge technologies, advanced manufacturing processes and global engineering programmes, while developing hands-on skills within a globally recognised New Zealand engineering organisation.

Want to take the next step in your career? Launch your engineering career with an iconic Kiwi company making global impact.



Dawn Aerospace Limited



Our mission is to accelerate the next generation of space users with scalable and sustainable ways to deliver the things they care about from Earth to Space, and from Space to everywhere else.



DHC Consulting Group  
Ltd



DHC Consulting Group is a leading New Zealand engineering consultancy with offices in Auckland and Christchurch. We deliver innovative, practical solutions across structural, civil, and fire engineering, partnering with architects, contractors, and clients to achieve exceptional outcomes.

We offer summer internships and graduate roles in structural, civil, and fire engineering. We value curiosity, collaboration, and problem-solving, alongside strong communication skills. Experience with Revit or Civil 3D is helpful, but enthusiasm to learn is key. Students gain hands-on exposure to design reports, producer statements, site observations, and multidisciplinary coordination – supported by structured mentoring.

Our portfolio includes Auckland International Airport's Transport Hub and Manawa Bay Outlet Centre, Westfield Newmarket, and a number of commercial buildings in Central Christchurch, just to name a few.

Join us to work on projects that shape communities and infrastructure across New Zealand.



Enatel



Electronics Engineering and Manufacturing Business: Enatel is a world-leading designer and manufacturer of advanced charging solutions for material handling equipment, ground support equipment, automated guided vehicles, and other off-highway vehicles.



# Ernest Rutherford Exhibitors

ENGEO



**ENGEO**

ENGEO is a consultant engineering firm with a reputation for our great working culture and creative, effective engineering solutions. We're a team of specialists with a focus on geotechnical, geology, environmental, and water resources services for high quality clients who value our excellent service. Our work spans complex and large-scale projects all across New Zealand - from transport and civil infrastructure to large-scale residential subdivisions and land development. We keep our structure flat and limit hierarchy. We give our team autonomy paired with strong senior and principal support. You'll receive hands on mentorship and structured internal and external training. Come say hello to hear more about your career with ENGEO!



Ergo Consulting Ltd



**ERGO**  
CONSULTING

At Ergo we aspire to be New Zealand's first choice provider of engineering consultancy services to the power and energy industry. We love engineering and design, and love sharing this passion with others. Doing a great job and getting it right is important to us.



Fisher & Paykel  
Healthcare



**Fisher & Paykel**  
HEALTHCARE

Care to make a difference. Fisher & Paykel Healthcare is a leading designer, manufacturer, and marketer of respiratory devices. Driven by a strong sense of purpose, we are working to improve patient care and outcomes through inspired and world-leading healthcare solutions. The needs of our customers and their patients drive everything we do. As a Grad or Intern with us you'll be part of an innovative, collaborative and values-driven workplace. You'll gain practical knowledge in an innovative environment, solve difficult problems, and learn from our experts. With us, you'll work with great people on challenging projects that will ultimately help improve patient care and outcomes.



FRAMECAD Ltd



**FRAMECAD**

FRAMECAD is a global leader in light gauge steel (LGS) framing technology. With offices in Auckland, Las Vegas and Dubai, FRAMECAD systems are transforming Design, Engineering, Manufacturing and Building together, in one seamless process. A revolutionary approach using innovative machinery and a design-led process to complete projects at scale and speed.



Frequency



**frequency**

We are a team of consulting project managers who have spent the last decade planning, managing, delivering, and optimising critical infrastructure and built environments across Aotearoa. We provide services across the full project lifecycle, from feasibility to design, procurement and construction, completion, handover, and everything in between. Our experience extends across multiple sectors, including high quality teaching and learning environments, public and mass transport systems, to sustainable and healthy housing. Our clients are Aotearoa's most influential organisations. These include Kāinga Ora, ASB, Waka Kotahi, KiwiRail, The Ministry of Education, Auckland Transport, and Auckland International Airport. We also work with many private sector clients.



Which faculty students  
are we looking for?



All students



Arts



Business



Engineering



Health



Law



Science

Isaac Construction  
Limited



Isaac Construction is a leading civil construction company with a proud history of delivering high-quality infrastructure across New Zealand, particularly throughout the South Island. With decades of experience, we work across a diverse range of projects including roading, earthworks, drainage, utilities, concrete, and large-scale infrastructure developments that support growing communities and industries.

What sets Isaac Construction apart is our people-first culture. We believe great projects are built by great teams, and we are committed to creating an environment where individuals can learn, grow, and thrive. From graduates and apprentices to experienced professionals, we invest heavily in training, mentoring, and career development, offering clear pathways for progression and opportunities to gain hands-on experience on complex, meaningful projects.

Safety, quality, and sustainability sit at the heart of everything we do. We take pride in building infrastructure that not only meets today's needs but also supports future generations, with a strong focus on innovation, environmental responsibility, and continuous improvement.

If you're looking for a career that offers variety, challenge, and the chance to help shape New Zealand's infrastructure, Isaac Construction is a place where you can build more than just projects – you can build your future.



Kami Holdings Ltd



Kami is a thriving organisation filled to the brim with talented, creative, and passionate people! It's hard not to love what you do when our leading digital classroom platform offers meaningful solutions to over 70 million users worldwide, empowering students and supporting teachers!



Klohn Crippen Berger



At KCB, we bring over 75 years of engineering, geoscience, and environmental consulting knowledge to address today's most complex engineering challenges. Whether in hydropower, mining, transportation, energy or infrastructure, our goal is to create enduring solutions that withstand the test of time.



Lumin



Lumin empowers modern businesses to work smarter.

Our cloud-based platform is designed and built to transform how teams work with documents, combining AI-powered document generation, a PDF editing suite and an eSignature platform that is trusted by over 100 million users worldwide.

We are looking for the next generation of Engineering, Computer Science, and Data Science talent to help us redefine digital collaboration.

If you are a creative problem solver who thrives on technical challenges and wants to see your code impact millions of users worldwide, you belong here. Lumin is proud to be a Kiwi company making a significant impact on the global stage.



# Ernest Rutherford Exhibitors

## OceanaGold



OceanaGold is a growing mid-tier gold and copper producer listed on the Toronto Stock Exchange (TSX). With four operating mines – Haile in the USA, Didipio in the Philippines, and Macraes and Waihi in New Zealand – we are committed to safe, responsible mining that generates strong returns and supports sustainable development.

Our purpose is mining gold for a better future. The gold, copper, and silver we produce power renewable energy, life-saving medical devices, and the technology that connects communities. Beyond this, our operations drive economic growth and improve health and education outcomes in the regions we serve, supporting over 3,700 direct jobs globally.

Guided by our values – Care, Respect, Integrity, Performance, and Teamwork – we strive to be a trusted company people want to work for, partner with, and invest in, creating lasting value for all our stakeholders.



## Optiver



Optiver is a global market maker founded in Amsterdam, with 11 offices globally. Established in 1986, we are a leading liquidity provider, with 2,000+ employees, united in our commitment to improve the market through competitive pricing, execution and risk management. By providing liquidity on multiple exchanges across the world in various financial instruments we participate in the safeguarding of healthy and efficient markets. We provide liquidity to financial markets using our own capital, at our own risk, trading a wide range of products: listed derivatives, cash equities, ETFs, bonds and foreign currencies.



## Patersons



Real Projects. Real Responsibility. For 125 years, Patersons has helped shape the landscapes and communities of Aotearoa through practical engineering, surveying and planning. Since 1900, we have partnered with landowners, developers and local authorities to navigate land development with confidence and care.

Today, our civil engineering team works across a diverse mix of projects. From stormwater upgrades and roading infrastructure to large, staged subdivisions and landmark commercial sites such as Ayrburn in Arrowtown, Skyline Queenstown and Station Bay in Tekapo, our work is varied, technically challenging and grounded in place.

With offices in Dunedin, Queenstown, Wānaka, Cromwell, Alexandra and Christchurch, and a team of more than 100 professionals, we combine deep local knowledge with modern tools and collaborative thinking. Problem-solving sits at the heart of what we do. We take ownership, work closely with clients, and focus on practical outcomes that stand the test of time. For civil engineering graduates, this means getting stuck into real projects from the outset.

You will work alongside experienced engineers and Principals, contribute to meaningful developments, and gain exposure to the full life cycle of land development. Whether you see yourself as a future specialist or a well-rounded generalist, we will support you to build a career that fits.



## Powerco



We keep the energy flowing to more than 900,000 people across the North Island of Aotearoa New Zealand. As the country's largest dual-energy distributor by network length, we own and operate over 29,200km of electricity lines and over 6,200km of gas pipes.



Which faculty students are we looking for?



All students



Arts



Business



Engineering



Health



Law



Science

Structex



Join Structex, a creative, future focused engineering consultancy where people and ideas come first. From day one, you'll be supported by experienced colleagues, trusted to take responsibility, and encouraged to challenge conventional thinking. You'll build client relationships, develop technical and professional skills, and shape a career path that suits you. We value flexibility and offer working arrangements that support life beyond work. As an employee owned company, we reward commitment through our Employee Share Trust, providing a genuine pathway to ownership. If you're ready to make an impact and grow in a supportive environment, start your journey with Structex.



Transpower NZ Ltd



We provide the infrastructure and market systems that connects electricity generators to major electricity users and distribution networks that deliver electricity to homes and businesses around the country (we don't own, generate or sell electricity).

As a Transpower graduate you'll play a meaningful role in shaping the future of New Zealand's electricity industry.

During the two-year programme, based in our head office Waikoukou in Wellington, you'll rotate through many areas of the business working with our assets, our technology and the electricity market system.

It's your chance to explore the meaningful work of Transpower and plan how you can shape your future with us.

Opportunities exist for electrical, mechanical and civil engineering graduates, and mechatronics graduates who have completed power system papers.



WSP New Zealand



We are one of the world's top professional services firms, bringing together some of the brightest engineers, advisors and scientists from across the globe.

With an unmatched breadth and depth of engineering, advisory and science-based expertise, our global minds unite to power local solutions. We are pioneers, pathfinders and impact makers. We are Visioneers.



Wyma Engineering



Wyma Solutions has become one of the most innovative and agile companies in the post-harvest sector. Wyma continues to improve the vegetable industry, with its strong focus on customer outcomes and quality. With its headquarters in Canterbury, New Zealand, Wyma Solutions now has production facilities on two continents and has machinery operating in more than 50 countries.



# Discover your options



## Make the most of Careers Fairs and Employer Events

Careers fairs are about connection, exploration, and confidence building — not just job hunting. Whether you're actively applying or simply curious about future options, you can gain something valuable.

### Before the event: Set yourself up for success

#### Do a little research

Look at the list of exhibitors a few days before the event.

Identify a few organisations that interest you and learn the basics:

- What do they do?
- What kinds of roles or graduates do they hire?
- What values or skills matter to them?

Prepare 2–3 thoughtful questions. This helps you have more meaningful conversations.

#### Plan your introduction

You don't need a "perfect pitch." Keep it simple:

"Hi, I'm [Name]. I'm studying [degree/major] in my [year]. I'm interested in learning more about opportunities in [area]." From there, let the conversation flow naturally.

#### Dress in a way that feels professional and comfortable

Smart casual is usually appropriate. Aim for something that makes you feel confident and put-together — not uncomfortable or unlike yourself.

#### Give yourself time

If possible, arrive early. Conversations can feel more relaxed before the space gets busy. Check event details in advance so you know where to go and when it starts.

### During the event: focus on connection

#### Start where you feel comfortable

If you're nervous, warm up by speaking with organisations you're curious about but not prioritising. By the time you speak to your top choices, you'll feel more confident.

#### Ask thoughtful questions

Go beyond "What jobs do you have?"

You might ask:

- What qualities do successful graduates in your organisation share?
- What surprised you about working here?
- What advice would you give someone in my position?

#### Capture key information

Instead of collecting lots of paper:

- Take notes on your phone (with permission if appropriate)
- Photograph QR codes
- Save relevant links
- Write down names and insights that stood out

This will help when you apply or follow up later.

#### Follow up thoughtfully

If you had a valuable conversation, you can:

- Ask for contact details
- Connect on LinkedIn
- Send a short thank-you email referencing something specific you discussed

Example:

"Thank you for speaking with me at the Careers Fair today. I appreciated your insight about [specific topic]. I'll be exploring [next step] and hope to stay in touch."

Professional, simple, genuine.

#### And finally

You don't need to "perform."

Be curious. Be respectful. Be yourself.

Careers fairs are about building confidence and clarity — not getting everything perfect.



CRIN1131540748