

University of Canterbury, New Zealand
2012 International Prospectus



**Open a
gateway to
your future.**



Contents

- 2 New Zealand – Welcome! Kia ora!
- 4 Christchurch – the Garden City
- 6 University of Canterbury
– a world-recognised education
- 8 Undergraduate programmes
- 10 Postgraduate and graduate
programmes
- 12 Preparing for University study
- 14 Undergraduate entrance
requirements
- 16 Accommodation
- 18 Support at UC
- 19 Fees and financial assistance
- 20 Preparing to study in New Zealand
- 21 Applying to UC





Welcome to the University of Canterbury



I am delighted that you are exploring what the University of Canterbury has to offer international students. I believe that as a study destination our combination of world-recognised academic programmes, wonderful natural environment, and safe, friendly community has few equals anywhere in the world.

The overwhelmingly warm response we get from past international graduates, many of them now leaders in business and in the community in their home countries, is ample testimony to the quality of our teaching and the value of our first degree programmes.

The calibre of our research, especially at postgraduate level, is another factor that brings many international students to Canterbury.

Whether you are an undergraduate seeking an initial qualification to equip you for the future, or a postgraduate wanting to push the boundaries of knowledge in your discipline, I am sure you will find what you need among our programmes.

Dr Rod Carr
Vice-Chancellor

New Zealand – Welcome! Kia ora!



New Zealand is known throughout the world as a country of great natural beauty – one that is easy to fall in love with and impossible to forget. The country’s lakes, mountains, native forest, open spaces and clean air provide a magical backdrop to your student experience.

Similar in size to Great Britain but with a population of just over four million people, New Zealand is one of the world’s least-crowded countries. There are two main islands, the North and South islands. The South Island is home to the world-famous landscapes of Fiordland, Central Otago, the West Coast and the Southern Alps.

New Zealand society is diverse and multicultural. Although the bulk of New Zealand’s population are of European descent and English is the everyday language, Māori, New Zealand’s indigenous population, make up around 15 per cent of the population and growing numbers of people from around the world are making New Zealand their home.

New Zealand is also a great place to live. It was recently ranked third in the world for quality of life (United Nations HDI, 2010). In the cities you will find great food and coffee, bustling nightlife and a feast of entertainment options. Outside the cities you will find amazingly beautiful scenery from pristine beaches to commanding mountains whose magnificence rivals those found anywhere else in the world.



Above: Kepler Track, Fiordland National Park. Below: A marae, a traditional Māori gathering place.

New Zealand's varied landscapes and pleasant climate make it ideal for many outdoor activities, and a great place to relax. New Zealand is a nation of sports lovers, and sailing, skiing, snowboarding, surfing, hiking and fishing are all popular pastimes.

But what many people may not know is that New Zealand is a technologically advanced country with a sophisticated urban culture and a world-class education system, with a university tradition that dates back nearly 150 years.

New Zealand is a great place to do business and punches above its weight on the world stage. It has been named by the World Bank as the best country in the world in which to do business two years in a row and the Global Entrepreneurship Monitor ranks New Zealand second in the world for innovation.

A temperate climate with relatively small seasonal variation makes New Zealand an ideal destination.

Average maximum and minimum temperatures – Christchurch, New Zealand

Month (Season)	Average maximum temperature	Average minimum temperature
January (Summer)	23°C (73°F)	12°C (54°F)
July (Winter)	11°C (52°F)	2°C (36°F)



‘When I was looking for a study abroad experience New Zealand seemed by far the most interesting place. One of the main reasons I came was for the outdoors lifestyle. Going tramping, sporting ... Wow!’

Maria Akesson (Sweden)



Above: The alpine resort town of Queenstown from the air. Below: Rugby, New Zealand's national game.

Christchurch – the Garden City



Punting on the Avon River in Hagley Park, in the heart of Christchurch City.

Christchurch, located in the Canterbury region, is an ethnically diverse city offering an exciting and easy lifestyle for students.

With a population of around 400,000, Christchurch is the largest city in the South Island and the second largest in the country.

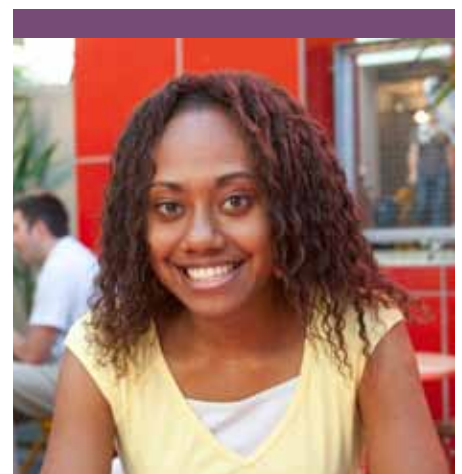
Christchurch is not only the second major business centre in New Zealand but as the national centre of Information and Communications Technology (ICT), it has quickly become known as New Zealand's digital city.

Christchurch is currently undergoing a major rebuilding and is in the process of transforming itself into one of the world's most modern and sustainable cities.

The city also offers a huge range of exciting recreational options in nearby locations of incredible natural beauty including the rugged beauty of Banks Peninsula, the historic French town of Akaroa, thermal hot springs at Hanmer, snowboarding on the Southern Alps and whale watching near Kaikoura.

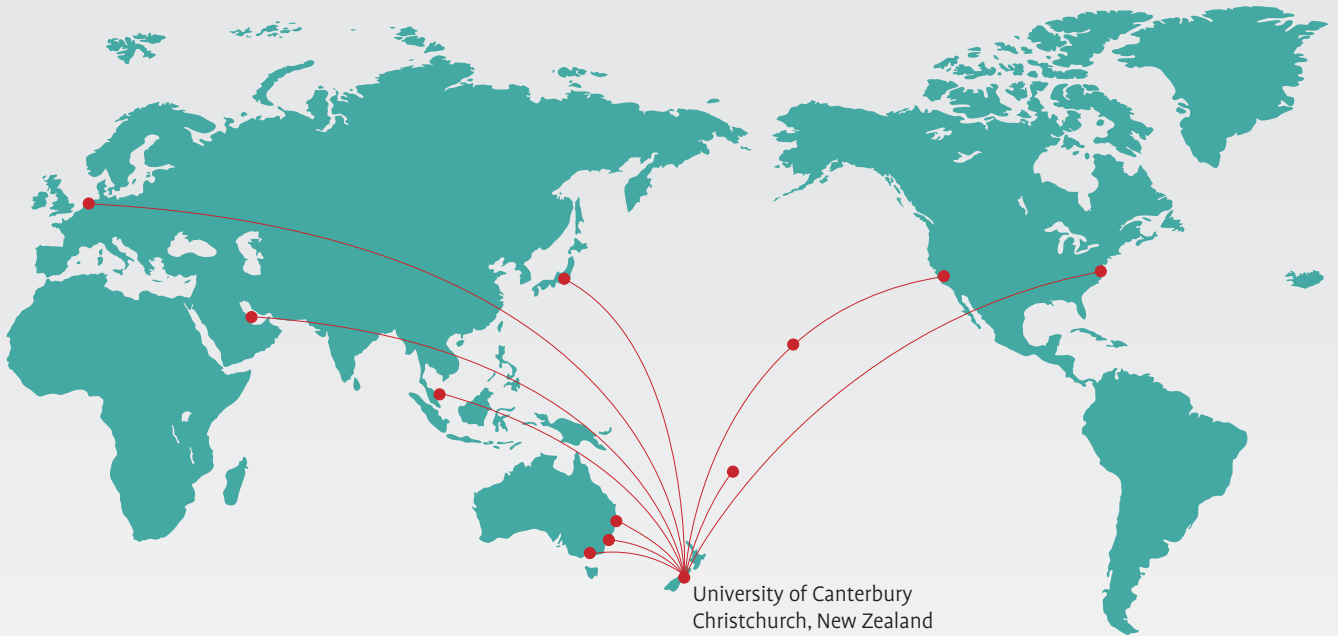
Christchurch – key facts

- New Zealand's most affordable major city.
- Known as the 'Garden City' for its many public parks, uncongested roads and an excellent public transport system.
- A conveniently located international airport which easily connects you to major cities all over the world.
- A leading centre for innovation, research and technology, and home to New Zealand's largest ICT industry cluster.
- Key business sectors include engineering, biotechnology, avionics, electronics, software engineering, agriculture, education, forestry, nutraceuticals, Antarctic research and tourism.
- Lively arts and entertainment scene with regular festivals, concerts, sports matches and cultural events nearly every week of the year – visit the Christchurch event guide at <http://bethere.co.nz>
- Surf beaches 15 minutes' drive from the city centre and ten alpine skifields within two hours' drive.
- A diverse and welcoming city with many international restaurants, a variety of cultural activities and centres of worship for Christian, Muslim, Buddhist, Hindu and other religious communities.



'It has been an awesome place to study for me personally because Christchurch is such a beautiful city. After a hard day of work it's nice to relax in such a beautiful environment.'

Anthea Arnhambat (Vanuatu)



New Zealand



Approximate flight times to/from Christchurch	
Melbourne, Sydney, Brisbane, Gold Coast	3 hours 30 minutes
Singapore, Kuala Lumpur, Tokyo	10 hours
Other international routes via Auckland*	
Pacific Islands (Fiji, Rarotonga, Tonga, Samoa)	3-5 hours
Honolulu	8 hours 40 minutes
Los Angeles	12 hours
New York, Dubai	19 hours
Amsterdam	23 hours

*From Auckland it is only a 1 hour 20 minute flight to Christchurch.

University of Canterbury

– a world-recognised education

The University of Canterbury – Te Whare Wānanga o Waitaha – was established in 1873 and is New Zealand’s second oldest university. We have built up a strong international reputation for our high quality degrees, excellent teaching staff and cutting-edge research.

Since its establishment, the University of Canterbury (UC) has produced graduates who have gone on to become leaders in their fields. We are committed to developing tomorrow’s leaders and you will find our graduates in top jobs and graduate schools the world over.

UC programmes are recognised worldwide, and aim to foster intellectual independence, critical thinking and professional excellence in every field.

All UC teaching programmes are research-based, with academic staff who are actively involved in research and publishing in their areas of speciality. As a result students can expect to be taught by lecturers who are at the forefront of knowledge in their fields from undergraduate level. Teaching and supervision up to PhD level is available in most disciplines.

University of Canterbury – key facts (2010)

- Ranked 189 in QS World University Rankings.
- Established in 1873 by scholars of Oxford and Cambridge universities.
- Government-funded, research-led university offering English language and Foundation studies, undergraduate (bachelor’s) degrees, master’s degrees, postgraduate certificates and diplomas, and doctorates (PhDs).
- A comprehensive university offering over 100 programmes, from Foundation Studies to doctoral studies, in over 150 disciplines, from Accounting to Zoology.
- 18,764 students, including over 2000 international students from more than 80 countries.
- Nearly 2000 students live on campus in six halls of residence, which provide a fun, supportive environment.
- Over 118,000 alumni currently living and working in countries all over the world, including leading professionals in all spheres of life.
- Our most distinguished alumnus is Nobel Prize-winner Ernest Rutherford. Other famous alumni include New Zealand’s Prime Minister, John Key, actor Sam Neill and Director of Google Engineering Craig Nevill-Manning.
- Three teaching periods: Semester one (February to June), Semester two (July to November) and Summer programme (November to February).
- Modern teaching and research facilities including five libraries, computer labs with 24-hour access, lecture theatres, laboratories and studios.
- Spacious, park-like campus, ten minutes drive from Christchurch International Airport and the central city, and just five minutes away from many shops, cafés and bars.
- The University Library has a collection of more than 1.8 million items and provides access to more than 35,000 periodicals in paper or electronic format. It is also home to many unique collections and archives.
- On-campus services and facilities include cafés, bars, a health centre and pharmacy, recreation facilities, childcare facilities, shops, bank machines and an art gallery.
- The University of Canterbury Students’ Association (USCA) organises social events and there are over 100 student clubs you can join (www.ucca.org.nz).





International connections

The University has links with key universities internationally. These include staff and student exchange programmes, research collaborations and articulation agreements.

Partnership agreements

The University of Canterbury maintains numerous partnership agreements with many distinguished universities, including:

- Colorado State University
- Lillehammer University
- Purdue University, Indiana
- Queen's University, Canada
- Shanghai Jiao Tong University
- University of Cambridge
- University of Hong Kong
- University of Nottingham
- University of Oxford
- University of Tokyo
- University of Washington, Seattle.

Staff exchange programmes

The unique Erskine Programme brings 75 distinguished international academics to campus each year for a period of one to three months, to teach and research within the faculties of Commerce, Engineering and Science. Erskine Fellows have included two Nobel Prize winners: Emeritus Professor Clive Granger for Economic Sciences in 2003 and Professor Bob Grubbs for Chemistry in 2005. In addition, Visiting Fellowships are awarded each year to academics from Cambridge and Oxford to lecture at UC.

Student exchange programmes

The University has student exchange agreements with more than 50 universities in North America, Europe, Asia and Australia, including University of British Columbia, University of California, University of Copenhagen, University of Nottingham, National University of Singapore and the University of Adelaide.

Exchange students are nominated by their home institutions and are not required to pay tuition fees to the University of Canterbury. UC also has a joint doctoral scholarship programme with the China Scholarships Council.

For more information go to www.canterbury.ac.nz/international/exchange/income.shtml

Study Abroad programme

The Study Abroad programme allows students to come to study at the University of Canterbury from universities overseas. You can study for one or more semesters, selecting options from hundreds of courses.

UC offers a Certificate of Proficiency for courses completed, which can be taken back to your own university as a component of your degree there. Some courses run first semester, some second semester, and others are full-year courses.

You may either apply directly to the University of Canterbury or through a Study Abroad programme based in your home country.

For more information about Study Abroad go to www.canterbury.ac.nz/international/studyab



'I am so grateful for all of the amazing people I have met and the chance to see something so different from my home.

I have met people that I never would have had the opportunity to meet otherwise.

I feel that I came here as an eager student, but am leaving a global citizen.'

Kelsey Dignum (USA)

Undergraduate programmes

A degree is the standard qualification you study towards at university. Your first degree is called a bachelor's degree and usually takes three or four years of full-time study to complete.

Courses are the building blocks of all UC qualifications. Each course has a point value which you can count towards your qualification when you have passed the course. Three-year degrees require you to gain credit for courses adding up to at least 360 points and four-year degrees require a minimum of 480 points. A normal full-time load is approximately 120 points per year.

UC provides a choice between professional specialist academic training in areas such as Engineering, Accounting, Teaching and Learning, and Law, and more general study in areas such as Science, Arts and Commerce.

Specialist degrees prepare you for a career in a particular profession, as well as equipping you with transferable skills that are applicable to a range of careers. With specialist degrees a number of courses are compulsory and your course of study is more prescribed.

General degrees are the most flexible degrees. You have the opportunity to study subjects from other degrees – this means you could do a Science degree and take a subject such as English or Education. With general degrees you choose a subject to specialise in – this is called your major. You can also major in two subjects – a double major.

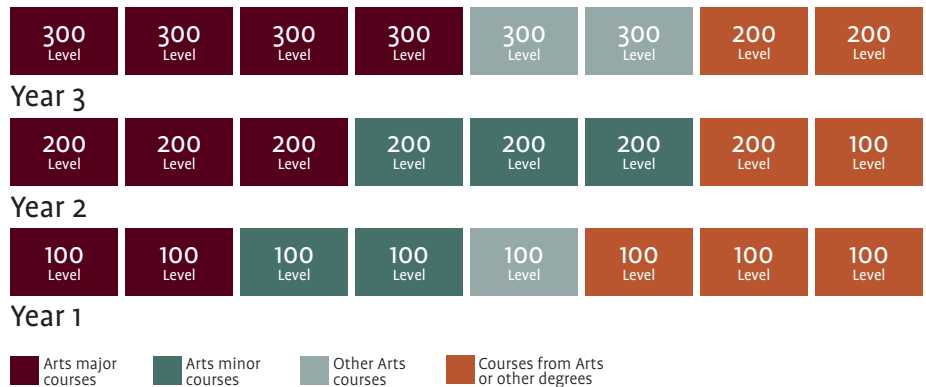
For more information about qualifications offered at UC go to www.canterbury.ac.nz/courses

For a list of subject areas go to www.canterbury.ac.nz/subjects

For undergraduate entry requirements, see pages 14–15.

Note: Course offerings are subject to change without notice.

Typical degree structure – general degree (eg, BA)



Each block in this diagram represents a 15-point course however some courses may be 30 points (or more). Therefore students should plan their degree in points rather than by number of courses. This diagram is an example only – other combinations are possible.

General degrees

You can continue on into graduate and postgraduate study in most of the subjects listed.

Bachelor of Arts (3 years)

- American Studies
- Anthropology
- Art History and Theory
- Chinese
- Cinema Studies
- Classics
- Cultural Studies
- Economics
- Education
- English
- European Languages and Cultures
- European Union Studies
- French
- Geography
- German
- History
- Human Services
- Japanese
- Linguistics
- Management Science
- Māori and Indigenous Studies
- Mathematics
- Media and Communication
- Music
- Pacific Studies (minor only)
- Philosophy
- Political Science
- Psychology
- Russian
- Sociology
- South Asia Studies (minor only)
- Spanish
- Statistics
- Te Reo Māori
- Theatre and Film Studies

Bachelor of Commerce (3 years)

- Accounting
- Economics
- Finance
- Human Resource Management
- Information Systems
- International Business
- Management
- Management Science and Operations Management
- Marketing
- Strategy and Entrepreneurship
- Taxation and Accounting

Bachelor of Science (3 years)

- Astronomy
- Biochemistry
- Biological Sciences
- Biosecurity (endorsement)
- Biotechnology (endorsement)
- Chemistry
- Computer Science
- Ecology (endorsement)
- Economics
- Environmental Science (endorsement)
- Finance
- Geography
- Geology
- Linguistics
- Management Science
- Mathematics
- Philosophy
- Physics
- Psychology
- Statistics

Typical degree structure – specialist degree (eg, BForSc)

FORE 419	FORE 444	FORE 445						FORE 414
----------	----------	----------	--	--	--	--	--	----------

Year 4

FORE 307	FORE 316	FORE 327	FORE 342	
----------	----------	----------	----------	--

Year 3

FORE 205	FORE 215	FORE 218	FORE 219	FORE 222	FORE 224	SOIL 203
----------	----------	----------	----------	----------	----------	----------

Year 2

FORE 111	FORE 131	FORE 141	FORE 151	BIOL 112	BIOL 113	CHEM 114	STAT 101
----------	----------	----------	----------	----------	----------	----------	----------

Year 1

Compulsory courses	Elective Forestry Science courses	Dissertation for honours students only
--------------------	-----------------------------------	--

First-year courses may change. Please check www.canterbury.ac.nz/courses for more information. This structure is for students starting 2011 onwards.



'The extremely friendly atmosphere and the multicultural environment where I could mix with students from all over the world played a big part in my decision to study at UC.'

Shefali Iyer (India)

Specialist degrees

You can continue on into graduate and postgraduate study in most of the subjects listed.

Bachelor of Education (Physical Education)* (4 years)

Bachelor of Engineering with Honours (4 years)

- Chemical and Process Engineering
- Civil Engineering
- Computer Engineering
- Electrical and Electronic Engineering
- Forest Engineering
- Mechanical Engineering
- Mechatronics Engineering
- Natural Resources Engineering

Bachelor of Fine Arts* (4 years)

- Film
- Graphic Design
- Painting
- Photography
- Printmaking
- Sculpture

Bachelor of Forestry Science (4 years)

Bachelor of Laws (4 years)

Bachelor of Laws Honours (4 years)

Bachelor of Music (3 years)

- Composition
- Digital Music, Sonic Art and Recording Technology
- Music Education
- Music History, Culture and Research
- Musicianship
- Performance*

Bachelor of Social Work (4 years)

Bachelor of Speech and Language Pathology with Honours (4 years)**

Bachelor of Sport Coaching* (3 years)

Bachelor of Teaching and Learning (Early Childhood)* (3 years)

Bachelor of Teaching and Learning (Primary)* (3 years)

*Special application required, and special entry requirements and deadlines may apply – visit the college website for more details.

**Name change subject to UNZ CUAP approval due December 2011.

Postgraduate and graduate programmes

The University of Canterbury offers postgraduate qualifications recognised worldwide.

UC graduates are accepted into prestigious university programmes overseas and secure research positions around the world, while others go on to high-calibre jobs.

With over 70 qualifications in over 100 disciplines available at graduate and postgraduate level, UC has a programme of study for you. For more information go to www.canterbury.ac.nz/courses

The University also has over a hundred PhD and master's scholarships available in all subjects and disciplines.

When it comes to research quality, the University of Canterbury is ranked in the top three New Zealand universities and is ranked number one in Engineering and Technology, Foreign Languages and Linguistics, and other Health Studies (including Rehabilitative Therapies).

Inspirational research

UC holds an international reputation for high-calibre research and teaching across a broad range of disciplines.

UC has world-class researchers working in most subject areas. Students directly benefit from UC's many research centres and interdisciplinary research groups, its collaborations with universities and research institutes overseas, its industry partnerships, and its unique field stations.

Breakthroughs involving UC academics which have captured international attention include the development of a robot which can walk on walls and ceilings, and on any surface; and the discovery of a new planet, significantly more Earth-like than any other planet yet discovered.

The depth of research activity at UC ensures students are taught and supervised by academics who are up-to-date with advances in their field of study and who are making significant contributions to knowledge.

UC's research centres contribute to ensuring that the University is at the forefront of research and new technology. They attract and retain high-calibre teaching staff and offer exciting research opportunities at postgraduate level.



Setting up a laser for sub-wavelength imaging experiments in the Department of Electrical and Computer Engineering.

The UC SPARK website (www.canterbury.ac.nz/spark) is a searchable database that showcases UC's research. It provides information about individual researchers, the projects they are working on, the research groups they belong to, the specialist equipment that they use and their affiliations.

UC research – key facts

- In 2010 the University received in excess of NZ\$49m (US\$39m) in research funding.
- The University's National Centre for Research on Europe (NCRE) recently received €1.2 million (US\$1.7 million) in funding from the European Commission and is a partner in Erasmus Mundus, a European Commission-run international doctoral student exchange programme.
- The University has over 20 research centres, including Gateway Antarctica: Centre for Antarctic Studies and Research; the Biomolecular Interaction Centre; the New Zealand Institute of Language, Brain and Behaviour; and the Waterways Centre for Freshwater Management.
- The University operates five field stations across New Zealand, and in Antarctica.
- The super high-speed KAREN network connects the University to the international research community.

- The University is a Southern African Large Telescope (SALT) project partner and operates a field station in Nigeria as part of the Nigerian Montane Forest project.
- NZi3, the New Zealand ICT Innovation Institute is an entrepreneurially-focused, applied research institute, offering a unique fusion of the best of New Zealand's ICT academic expertise with industry-driven research.
- The University has New Zealand's leading nanotechnology laboratory and operates the best astronomical research facility in the country at Mt John, Tekapo, famous for its clear southern skies.

More information

For postgraduate English language requirements go to www.canterbury.ac.nz/admissions/international/english.shtml

For more information about postgraduate and graduate study at UC go to www.canterbury.ac.nz/postgrad

To request a copy of the Postgraduate Prospectus phone +64 3 364 2555 or email postgraduate-office@canterbury.ac.nz

Postgraduate and graduate programmes and subjects at UC

Honours degrees	Postgraduate certificates	Graduate and postgraduate subjects
<p>Honours degrees involve one year of full-time coursework and are equivalent to the first year of a master's degree.</p>	<p>Postgraduate certificates are highly specialised professional qualifications involving six months of full-time study.</p>	<p>In addition to most of the subjects listed opposite, you can continue on into graduate and postgraduate study in most of the following subjects:</p>
<ul style="list-style-type: none"> • Arts • Commerce • Fine Arts • Music • Science • Teaching and Learning 	<ul style="list-style-type: none"> • Antarctic Studies • Clinical Teaching • Education • Health Sciences • Palliative Care • Specialist Teaching • Strategic Leadership* • Tertiary Teaching 	<ul style="list-style-type: none"> • Ancient History • Applied Psychology • Art Curatorship • Art History • Art Theory • Audiology • Bioengineering • Biotechnology • Business Administration • Business Management • Cellular and Molecular Biology • Child and Family Psychology • Classical Studies • Clinical Psychology • Clinical Teaching • Computational and Applied Mathematics • Computer Security and Forensics • Construction Management • Counselling • Creative Writing • Diplomacy and International Relations • Early Intervention • Economics and Mathematics • e-Learning and Digital Technologies in Education • Engineering Geology • Engineering Management • Environment and Health • Ethics • European Studies • Fire Engineering • Geographic Information Sciences • Hazard and Disaster Management • Health Behaviour Change • Health Information Management • Health Sciences • Higher Education • Human Interface Technology • Industrial and Organisational Psychology • International Law and Politics • Journalism • Leadership • Literacy • Maori and Indigenous Studies • Mathematical Physics • Mathematics and Philosophy • Medical Physics • Medical Physics (clinical) • Men's Health • Microbiology • Palliative Care • Plant Biology • Science and Entrepreneurship • Seafood Sector: Management and Science • Speech and Language Sciences • Tertiary Teaching • Transportation Engineering • Zoology
Master's degrees	Postgraduate diplomas	
<p>Master's degrees involve 1–2 years of full-time study in the form of either coursework or research, or a combination of both. Research is presented in the form of a thesis, dissertation or research project.</p>	<p>Postgraduate diplomas are highly specialised professional qualifications involving one year of full-time study.</p>	
<ul style="list-style-type: none"> • Antarctic Studies • Arts • Audiology • Business Administration (MBA) • Business Management† • Commerce • Education • Education with Certificate in Counselling • Engineering • Engineering Management • Engineering Studies • Fine Arts • Fine Arts in Creative Writing • Fire Engineering • Forestry Science • Geographic Information Science • Health Sciences • Human Interface Technology* • International Law and Politics • Laws • Laws (International Law and Politics) • Māori and Indigenous Studies • Music • Science • Social Work • Speech and Language Therapy • Te Reo Māori • Transportation Engineering • Water Resource Management* 	<ul style="list-style-type: none"> • Antarctic Studies • Applied e-Teaching and Support • Art Curatorship • Business Management† • Child and Family Psychology • Clinical Psychology • Economics • Education • Engineering Geology • Forestry • Geographic Information Science • Health Sciences • Industrial and Organisational Psychology • Māori and Indigenous Studies • Science • Social Work • Specialist Teaching • Tertiary Teaching • Te Reo Māori • Water Resource Management* 	
	Graduate programmes	
	<p>Graduate programmes provide an opportunity to study in a different area to your first degree.</p>	
	<p>Graduate certificate</p> <ul style="list-style-type: none"> • Science Innovation and Entrepreneurship <p>Graduate diplomas (one year full-time)</p> <ul style="list-style-type: none"> • Accounting and Information Systems • Arts • Business Administration • Early Childhood Teaching • Economics • Forestry • Journalism • Management • Science • Teaching and Learning (Primary) • Teaching and Learning (Secondary) 	
Doctorates		
<p>A doctorate prepares you for an academic career in your chosen subject and involves 2–4 years of full-time research presented in a thesis.</p>		
<ul style="list-style-type: none"> • Doctor of Philosophy (PhD) • Doctor of Musical Arts (DMA)** 		

*Subject to UNZ CUAP approval due December 2011.

**Subject to TEC approval.

†Not offered in 2012.

Preparing for University study

Studying towards a university qualification may be one of the most exciting challenges you will have. Let us help you.

At UC, we are here not only to provide you with a world-class education but to also ensure that you are successful in reaching your goals. We want you to have the tools and skills you need to succeed in your education which is why we have developed a unique combination of preparatory courses to ensure your success.

Gaining admission to UC

If you are applying for admission to an undergraduate programme on the basis of a non-New Zealand qualification, check the entry requirements on pages 14–15*. You must also provide recent evidence that you have a satisfactory level of proficiency in English (see the tables opposite).

Meeting English language requirements

An English language test score such as IELTS or TOEFL is not necessarily required before you come. If you are already in New Zealand, UC provides English language testing on campus.

If you are going directly into a degree programme you must satisfy our English language requirements before UC can offer you a full offer of place.

If you don't have an official English language test score, UC can provide a conditional offer of place into a degree programme based on successful completion of the appropriate UC preparatory programme(s).

Students undertaking English language courses who perform very well may be able to advance to the next level of study after completing only half of their courses.

Meeting academic requirements

Depending on your academic background, whether it is your high school scores or post-secondary studies (see pages 14–15), you may need some further academic studies to ensure you have a solid foundation to succeed in your studies at UC.

Our Foundation Studies programme includes instruction in both English for Academic Purposes and academic subjects to prepare you for entry to undergraduate programmes.

English language requirements – for entry into Foundation Studies

Science and Business stream

Test	Overall (minimum)	Section scores (minimum)				TWE/Essay (preferred)
		Reading	Writing	Speaking	Listening	
IELTS (academic)	5.5	5.0	5.0	5.0	5.0	
TOEFL Paper-based (PBT) + TWE	520					4.0
TOEFL Internet-based (iBT)	68	17	12		17	
EAP2 (offered on UC campus)	Pass					
NCEA Level 2		3 credits	4 credits			
Foundation Studies placement test	Satisfactory result					

Arts stream

Test	Overall (minimum)	Section scores (minimum)				TWE/Essay (preferred)
		Reading	Writing	Speaking	Listening	
IELTS (academic)	5.5	6.0	6.0	5.5	5.5	
TOEFL Paper-based (PBT) + TWE	550					4.5
TOEFL Internet-based (iBT)	80	19	19		19	
EAP2 (offered on UC campus)	Pass with overall B grade					
NCEA Level 2		3 credits	4 credits			
Foundation Studies placement test	Satisfactory result					

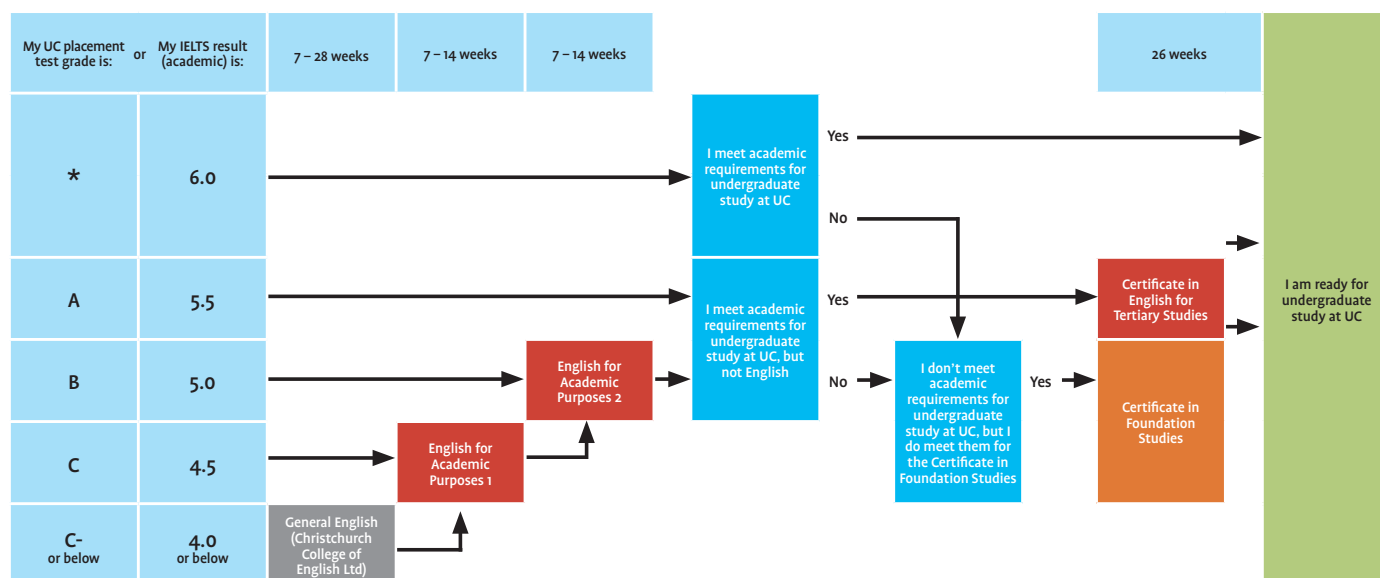
English language requirements – for entry into Undergraduate study

Test	Overall (minimum)	Section scores (minimum)				TWE/Essay (preferred)
		Reading	Writing	Speaking	Listening	
IELTS (academic)**	6	6	6	6	6	N/A
TOEFL Paper-based (PBT) + TWE	550	–	–	–	–	4.5
TOEFL Internet-based (iBT)	80	19	19	–	19	N/A
Cambridge CPE	C					
Cambridge CAE	A					
CertETS (offered on UC campus)	C					
APIEL	3					

**Teacher Education requires an overall IELTS score of 7.0 with a minimum score of 7.0 in each band. For postgraduate English language requirements see www.canterbury.ac.nz/admissions/international/english.shtml

Note: In some cases students who can demonstrate successful previous study in an English-speaking environment (for example students from Scandinavia with high grades in their final year of English at high school) may be exempted from a formal English language test.

Pathways to undergraduate study at the University of Canterbury



* Placement test does not apply to entry to undergraduate study.

Note: For teacher education programmes, students need to provide the evidence of IELTS (academic) 7.0, with no band score below 7.0.

Preparatory programmes

The University's English language and Foundation programmes prepare students for study at undergraduate and postgraduate degree level.

All UC preparatory programmes are taught on the UC campus where students have full access to the University libraries, computer labs, language labs, medical centre and sports facilities.

Using your IELTS results or UC placement test results, check the table above to find the pathway that is most appropriate for you to gain entry into undergraduate and/or postgraduate programmes at UC.

General English

General English courses are delivered on campus by our partner, the Christchurch College of English (www.ccel.co.nz). General English classes prepare you to enter the English for Academic Purposes programme.

English for Academic Purposes (EAP 1 & 2)

Each of the two English for Academic Purposes courses run for 14 weeks. They are broken into two seven-week modules (EAP1 and EAP2).

Preparatory programmes at the University of Canterbury

UC programme	Taken by
English for Academic Purposes	Students whose English language level does not meet the requirements for entry into university study.
Certificate in Foundation Studies	Students who do not meet the English language AND the academic requirements for entry into an undergraduate programme.
Certificate in English for Tertiary Studies	Students who meet the academic entry requirements for undergraduate and/or postgraduate study, but require some high-level academic English language training and university study skills.

After successfully completing EAP2 you can enter either the Certificate in English for Tertiary Studies or the Certificate in Foundation Studies, depending on your academic background.

Certificate in English for Tertiary Studies (CertETS)

This 26-week programme is for students who meet the academic entry requirements for undergraduate and/or postgraduate study, but require some high-level academic English language training and university study skills.

Successful completion of this certificate meets the University of Canterbury's English language entry requirements for most of UC's undergraduate programmes, although a few programmes may have additional requirements.

Certificate in Foundation Studies

This 26-week programme consists of two 13-week semesters with intakes in February, June and October, allowing you to begin immediately after your English language studies.

Successful completion of this certificate will enable you to meet both the academic and English language entry requirements for most of UC's undergraduate degree programmes. Students who demonstrate excellence in a subject may be eligible to study degree courses as a part of their programme.

The programme consists of English Language and Academic Study Skills courses as well as courses chosen from the arts, business, physical science and biological science streams. You will also develop the skills necessary to actively participate in lectures and understand lecturers' expectations regarding assignments and tests.

Undergraduate entrance requirements

Entry to the first year of most undergraduate degrees is open to all students who meet the listed entry requirements. If your country or qualification is not on the list or you need more information or advice contact Student Liaison, phone +64 3 364 2459 or email international@canterbury.ac.nz

Education system	Foundation level entry requirements	Undergraduate entry requirements	Education system	Foundation level entry requirements	Undergraduate entry requirements
Australia	Year 12 Certificate and ATAR of 60 or higher; or Queensland OP at 15 or lower	Year 12 Certificate and ATAR of 74 or higher; or Queensland OP at 12 or lower UNSW Foundation - Average C grade (6.5) or better overall	Hong Kong	HKCEE Secondary 4 Grade 3 or better in 5 subjects	GCE 'A' levels Two A level passes of which at least one must be at C grade plus two passes at AS level
Brazil	Certificado Conclusao de 2 Grau Grade 7 average	1 year of successful study towards an undergraduate degree at a recognised university in Brazil	India	All-India Senior School Certificate or the Higher Secondary School Certificate 50% or better in 4 subjects	An overall average of 75% with a minimum of 60% in English in All-India Senior School Certificate or the Higher Secondary School Certificate , or 1 year of successful study towards an undergraduate degree at a recognised university in India
Botswana	Botswana General Certificate of Secondary Education Examination Grades 1 to 5	Part 1 of the Bachelor degree programme with an average of C grade or better and no grade less than D. Diploma (3 year) from an affiliated institute of the University of Botswana with good grades. Higher National Diploma in Accounting and Business Studies completed with good grades (suitable for entry to Commerce degrees only).	Indonesia	SMU3 Average of grade 7 or more	1 year of successful study towards an undergraduate degree at a recognised university in Indonesia
Canada	Contact Student Liaison	Go to www.canterbury.ac.nz/admissions/international/canada.shtml	IB**		International Baccalaureate Diploma
Chile	Licencia de Educación Media Grade 7 to 5.9	1 year of successful study toward an undergraduate degree at a recognised university in Chile	Iran	High School Diploma with an average grade of 13 or higher or Pre-university Certificate with an average grade of 10 or 11.	High School diploma with an average grade of 15 or higher and Pre-university Certificate with an average grade of 12 or higher
China	Senior 3 - Achieved 80% in 3 appropriate subjects excluding English, Chinese, Politics in <ul style="list-style-type: none"> three years of high school study, and at High School Graduation Exam or University Entrance Exam, and High School Graduation Certificate. Senior 2 - Achieved 85% or higher in 3 appropriate subjects excluding English, Chinese, Politics	Completed one of the following at a recognised tertiary institution in China <ul style="list-style-type: none"> Completed one year of successful study (70% average) towards a four year bachelor degree at a recognised university, or a Diploma from a recognised institution requiring no less than two years to complete (70% average). The Diploma must have sufficient academic content. (Applications are considered on a case by case basis.) 	Ireland	Contact Student Liaison	A Leaving Certificate with passes in five subjects at C level or better in Higher level papers
Denmark	Contact Student Liaison	Bevis for Højere Forberedelseksamen (HF)/ Bevis for Studentereksamen Good grades in the Upper Secondary School Certificate. Students who have achieved a grade 7 or higher in English in the Secondary School Certificate are exempt from taking one of the standard English language tests as proof of their competence in English	Israel	Contact Student Liaison	Bagrut (Matriculation) or Mechina provided that grades of seven or above in six subjects are obtained.
Egypt	Certificate of General Secondary Education 75% in 3 subjects	1 year of successful study toward an undergraduate degree at a recognised university in Egypt	Italy	Contact Student Liaison	Diploma di Esame di Stato
Fiji	School Leaving Certificate, Form 6 65% in 4 subjects	USP Foundation Year All degrees except BSc: 7 passes in semester-length papers, including at least a C grade in either of the Communications Skills papers. BSc: At least a C grade in 1 Communication Skills paper plus a C average in the following year-long papers - BIOL (or TECH), CHEM, MATH, PHYS. Fiji Form 7 examination An aggregate over 4 relevant subjects of 250 out of 400 with minimum of 50 in English	Japan	General Upper Secondary School, Year 3, Grade 3 average General Upper Secondary School, Year 2, Superior grades	1 year of successful study toward an undergraduate degree at a recognised university in Japan Completion of a junior college diploma of 2-3 years duration High School Diploma with a minimum average 3.5 (Note: an applicant with a junior college diploma is likely to gain admission to a general degree programme only.)
France	Contact Student Liaison	Baccalauréat Diploma	Kenya	Certificate of Secondary Education 5 C+ grades or better	Certificate of Secondary Education minimum of a B average or GCE A level*
GCE 'A' levels		At least three 'A' levels at grade C or above. A result in General Studies cannot be included. (Sri Lankan students should refer to Sri Lanka)	Kuwait	General Secondary Education Certificate 75% in 3 academic subjects	1 year of successful study toward an undergraduate degree at a recognised university in Kuwait
Germany	Contact Student Liaison	Abitur Students who have achieved a grade of 13 in the English language paper of the Abitur examination are exempt from taking one of the standard English language tests as proof of their competence in English	Malaysia	SPM (or forecast results) Grade B or better over 5 subjects UEC Grade 6 or less over 5 subjects GCE O-level Grade C or above in 5 subjects	STPM 3 passes at Principal level (no lower than C) including 1 at B grade or better. All passes must be gained at the same sitting or GCE A level* UEC A maximum of 15 points over 6 academic subjects which must include at least 1 of Chemistry, Physics or Advanced Mathematics. Students who have achieved a grade of B4 or better in O level English (119) are exempt from taking one of the standard English language tests as proof of their competence in English
			Maldives	UCLES O level / Secondary School Certificate (HSC) Grade C or above in 5 subjects	UCLES A Level/ Higher Secondary School Certificate (HSC) provided that 3 A Levels at C grade or better are achieved. A pass in a General Subject cannot be counted.
			Nepal	Higher Secondary Education Certificate provided that 60% average is achieved.	Higher Secondary Education Certificate provided that 75% average is achieved.
			Netherlands	Contact the University of Canterbury	VWO

*Refer to GCE 'A' levels.

**International Baccalaureate Diploma

Education system	Foundation level entry requirements	Undergraduate entry requirements
New Zealand	<p>NCEA Academic requirement:</p> <ul style="list-style-type: none"> a minimum of 12 credits in each of two relevant subjects at Level 3, or a minimum of 12 credits in each of two relevant subjects at Level 2 with Excellence or Merit. <p>English language requirement:</p> <ul style="list-style-type: none"> 3 credits in Reading and 4 credits in Writing at Level 2, or successful completion of our EAP 2 course with satisfactory grades, or a satisfactory result in the placement test for Foundation Studies (available to students in New Zealand, please contact us at liaison@canterbury.ac.nz for further information), or a satisfactory English language test result, e.g. IELTS or TOEFL. Please see: English language requirement for Foundation Studies for minimum scores required for various subject streams of Foundation Studies (www.lps.canterbury.ac.nz/bridging/foundation/entry.shtml). 	<p>NCEA Cambridge International Examinations (CIE) /Advanced International Certificate of Education (AICE), taken in New Zealand only</p> <p>Bursary (www.canterbury.ac.nz/admissions/international/high_school.shtml)</p> <p>Foundation Studies (www.lps.canterbury.ac.nz/bridging/foundation/entry.shtml)</p>
Nigeria	Nigerian Senior School Certificate Grade 4 or less in 5 subjects	1 year of successful study towards an undergraduate degree at a recognised university in Nigeria.
Norway	Contact Student Liaison	Good grades in Vitnemål fra den Videregående Skole. Students who have achieved 4 or better in English in year 2 leading to the Vitnemål fra den Videregående Skole are exempt from taking one of the standard English language tests as proof of their competence in English
Oman	General Secondary School Certificate 75% in 3 subjects	1 year of successful study towards an undergraduate degree at a recognised university in Oman
Pakistan	Higher Secondary or Intermediate Certificate 60% (B) in 3 subjects	1 year of successful study towards an undergraduate degree at a recognised university in Pakistan
Papua New Guinea	See Australia	See Australia
Philippines	Secondary School Year 4 Grade B	1 year of successful study towards an undergraduate degree at a recognised university in the Philippines
Russia	Certificate of Secondary Education (Certificate of Maturity) Grade 4 or higher in 3 academic subjects	1 year of successful study towards an undergraduate degree at a recognised university in Russia
Samoa	Pacific Senior Secondary Certificate Grade 6 or better	National University of Samoa Foundation Year - A completed Foundation Certificate in one of Arts, Commerce, Education, General or Science (ie, not Nursing) with a minimum overall grade B3 and a minimum of grade B1 in HEN04 Foundation English.
Saudi Arabia	General Secondary Education Certificate 80% in 4 academic subjects	1 year of successful study towards an undergraduate degree at a recognised university in Saudi Arabia
Scotland	Contact Student Liaison	Scottish Highers: 4 Scottish Highers in academic subjects at Grade C or above
Seychelles	International General Certificate of Secondary Education Grade C or above in 5 subjects	Cambridge Overseas Higher School Certificate C grade or better is achieved in 3 subjects. A pass in General Subject cannot be included.
Singapore	GCE O-level Grade C or above in 5 subjects	NUS High School Diploma or Singapore GCE A levels: A minimum of 2 H2 passes and a third pass at H1 or H2 level, plus at least an E grade in N-level /O level mathematics or additional mathematics
Solomon Islands	Pacific Senior Secondary Certificate Grade 6 or better	Students with 3 or more B grades in the South Pacific Form Seven Certificate are deemed to have achieved New Zealand university entrance. All students must have grade 5 or better in PSSC English (for literacy) and grade 6 or better in PSSC maths (for numeracy).
South Africa	Senior Certificate (no matriculation endorsement)	Applicants must have completed the National Senior Certificate and be eligible to enrol in a bachelor's degree at a South African university.
South Korea	Senior High School, Year 3 70% ('mi') in 3 academic subjects	1 year of successful study towards an undergraduate degree at a recognised Korean university or Korean University Entrance Examination a minimum of 80%
Sri Lanka	GCE O-level Credit grade in 5 subjects	GCE A levels At least 3 A level passes at one sitting with at least one pass at grade C or better
Sweden	Contact Student Liaison	Good grades in the former Swedish School leaving certificate (Avgångsbetyg) or VG or MVG in the new Swedish School Leaving Certificate (Slutbetyg Från Gymnasieskola). Students who have achieved VG or MVG in English in either of the school leaving certificates are exempt from taking one of the standard English language tests as proof of their competence in English
Switzerland	Diplôme d'Ecole de Culture Générale, Diploma from a Middle School	Certificat de Maturité / Certificat de Maturité Cantonal reconnu par la Confédération, Federal Secondary School Leaving Certificate, Certificate of Assistant Bachelor / Associate Degree with high grades
Taiwan	Senior High School, year 3 Grade B (70%) Senior High School, year 2 Superior grades	A satisfactory standard in senior high school and a junior college diploma of at least 2 years' duration; or Junior high school and a 5 year junior college diploma; or 1 year of successful study toward an undergraduate degree at a recognised university in Taiwan
Thailand	Matayom 6 Average grade of 2.5 Matayom 5 Superior grades	1 year of successful study towards an undergraduate degree at a recognised university in Thailand.
Turkey	Devlet Lise Diploması (State High School Diploma) Grade 4 or 5	1 year of successful study towards an undergraduate degree at a recognised university in Turkey.
United Arab Emirates	Tawjihiyya (General) 75% in 3 academic subjects	1 year of successful study towards an undergraduate degree at a recognised university in UAE.
United Kingdom	GCE O-level Grade C or above in 5 subjects	GCE 'A' levels At least three 'A' levels at grade C or above. A result in General Studies cannot be included. Conditional offers can be given on forecast results. Apply directly to the University of Canterbury, not through UCAS.
United States of America	Contact Student Liaison	a) High School Diploma or a General Education Development Certificate (GED) with a score of at least 50 in each test and b) SAT 1 result of at least 1600 or a composite ACT score of 24 or better (SAT 1 scores below 1600 may be considered on a case by case basis.) <i>Please note: this refers to the new SAT 1 test which includes the Writing Assessment; if you completed the previous SAT 1 test, please contact us for details.</i>
Vanuatu	Pacific Senior Secondary Certificate Grade 6 or better	Students with 3 or more B grades in the South Pacific Form Seven Certificate are deemed to have achieved New Zealand university entrance. All students must have grade 5 or better in PSSC English (for literacy) and grade 6 or better in PSSC maths (for numeracy).
Vietnam	Upper Secondary School Graduation Diploma Grade 7 average	1 year of successful study towards an undergraduate degree at a recognised university in Vietnam

Accommodation

Where you choose to live while you are studying at UC is an important decision and part of the student experience.

When it comes to quality, affordability and convenience, the University of Canterbury offers a variety of accommodation options – both on-campus and off-campus.

On-campus accommodation

Nearly 2000 students live on campus in six halls of residence. Living in a hall of residence is a great way for you to make friends with both New Zealanders and international students from all over the world.

All the halls provide fully furnished single rooms, with University network and internet access, study facilities, and social and recreation facilities. Your meal options include fully-catered (three meals a day), semi-catered (evening meals only) and self-catered (meals not provided).

All on-campus accommodation has male and female students on mixed floors in single rooms. Single-sex accommodation is available in some halls, on request.

In-hall tutoring classes are arranged in popular subjects, and a variety of social and cultural events are organised throughout the year. International students under 18 must have their accommodation organised through the Accommodation Office, or they must stay with a parent or parents.

UC has very limited accommodation on campus for couples or students with families. Some family accommodation may be available in self-catered apartments at the UC Accommodation Student Village (Ilam Apartments, Sonoda Christchurch Campus and University Hall), otherwise it is most likely that you will need to find private rental accommodation off-campus.

For information about the 2012 application process, fees and contract dates, please go to www.canterbury.ac.nz/accom/halls/index.shtml

All halls require a deposit to confirm your place. This will vary depending on the hall.

For additional fees and other costs go to www.canterbury.ac.nz/accom/fees_2012.shtml



Top: A student common room in Ilam Apartments. Above left: A student bedroom in University Hall. Above right: The communal dining hall in Rochester and Rutherford Hall.

On-campus accommodation options

Option	Halls fees (2011 NZ\$) Other costs apply	Apply by
Fully-catered accommodation (three meals a day)	Bishop Julius Hall – \$12,704* College House – \$13,940* Rochester and Rutherford Hall – \$12,100† Sonoda Christchurch Campus (2012) University Hall – \$11,000–\$12,600 Ilam Apartments will offer a fully-catered option in 2012	1 October 2011 (full year and first semester) 1 May 2012 (second semester)
Semi-catered apartment (evening meal only)	Sonoda Christchurch Campus – \$10,200 (2011 only) Ilam Apartments will offer a semi-catered option in 2012	1 October 2011 (full year and first semester) 1 May 2012 (second semester)
Self-catered apartment	Ilam Apartments – \$6,720–\$9,870	Apply by 1 December 2011 for a guaranteed offer of place**

*Vacation fee applies (meals are not provided during term and semester breaks).

**A guaranteed offer of place is for new individual students who are over the age of 18 and applying for the full academic year (Feb–Nov 2012). For more information go to www.canterbury.ac.nz/accom/international/new_intl.shtml Details will be provided when you are sent your unconditional offer of place from the University. Enquiries and applications should be made as early as possible. Late applications will be considered if places are still available.

†No vacation fee. However, students are required to self-cater during terms and semester breaks.



Off-campus accommodation

Renting/Flatting

Renting a house or flatting means that you either live by yourself or share a private house or flat with other people and you are all responsible for paying the bills, cooking meals, doing your own laundry and other household chores.

Rent for a single student room in a house or flat in Christchurch, with shared bathroom and kitchen facilities, starts from NZ\$110 per room per week, plus shared expenses (power and phone/internet etc).

It is strongly recommended that you view a house or flat before signing an agreement. You will need to arrange for temporary accommodation for at least two weeks after you first arrive in Christchurch to give you time to find accommodation that you will be happy in.

You can search for a house or room to rent on the Accommodation Office's student flatting database Student Rent – go to www.studentrent.co.nz

Many properties come unfurnished and you need to include this expense in your initial budget. You should also budget for two weeks' rent in advance, a refundable bond of up to four weeks' rent plus set-up costs (power, phone/internet etc). For more information go to www.canterbury.ac.nz/accom/flatting



Top and left: A typical student flat (house) located off-campus. Above: Homestay accommodation with a local family.

Homestay (private board)

Homestays are available for individual students throughout Christchurch with local people and provide you with a chance to immerse yourself in the local culture. The cost for homestay accommodation in 2011 was NZ\$240 per person per week, plus an initial placement fee of NZ\$330. Fees are reviewed annually. The weekly fee covers three meals per day, a furnished room, power and local phone calls. The minimum stay is eight weeks. If you are considering homestay early applications are recommended but must be received at least two weeks prior to your arrival.

For more information go to www.canterbury.ac.nz/accom/homestay.shtml

Airport pickup

If you are a new international student arriving in New Zealand for the first time, the Accommodation Office can arrange transport from Christchurch International Airport to your accommodation. For details required go to www.canterbury.ac.nz/accom/international/airport_pickup.shtml

Accommodation assistance

The Accommodation Office provides support and advice on all your accommodation needs. Telephone: +64 3 364 2959, fax: 64 3 364 2940, email: accommodation@canterbury.ac.nz or go to www.canterbury.ac.nz/accom

Support at UC

The University offers international students orientation and mentoring programmes, friendship linkages with New Zealand families and assistance with learning skills

Our Student Support staff are trained and experienced in looking after international students. They provide advice and support on adjustment and transition, accommodation issues, insurance, immigration, academic issues and any other concerns.

Below are some resources which are available to help you adjust to life in a new country and succeed in your studies.

For more information contact Student Support phone +64 3 364 2591 or go to www.canterbury.ac.nz/support

Mentoring programme

The mentoring programme gives you a brilliant start to your life at UC. When you join the programme you will be matched with a UC Mentor who is studying similar subjects to you.

Mentors are volunteers who give you information on how to access the services on campus and can be someone you can talk to about your experiences and studies.

Your mentor will help you through the enrolment process, take you to the orientation activities and answer questions you may have. Your mentor will continue to give you on-going support.

For more information go to www.canterbury.ac.nz/support/mentoring

Learning Skills Centre

The Learning Skills Centre is a free advisory service and resource hub that focuses on writing and study strategies to maximise student achievement at all levels—from first year through to PhD. It offers individual consultations with a learning advisor to discuss assignments, as well as workshops, lectures, and resources on critical thinking and writing in the university context.

A consultation with a learning advisor can cover any questions related to writing, critical thinking or study. Alternatively, you can bring in a written assignment for a general review of your writing and suggestions for improvement.

Some questions students typically ask include, 'Can you tell me what I am supposed to do for this essay? I don't even know where to begin', or, 'How do I study for a lab practical exam?' Centre staff will also work with you to check over short homework passages and explain any errors, although they are not able to proofread entire assignments.

For more information go to www.lps.canterbury.ac.nz/lsc

Disability Resource Service

Students who have a disability will be provided with appropriate study support where resources permit. However, it may be the case that some high cost support needs are beyond the resources of the University to fund and will therefore become the responsibility of the student.

If you have a disability that requires support needs please email Disabilities Support Services at disabilities@canterbury.ac.nz to assess your needs and determine whether the University is able to fund or provide the support required.

For more information go to www.canterbury.ac.nz/disability

The Health Centre

The Health Centre is a clinic devoted to providing excellent medical, counselling and related services to the students and wider UC community.

The Centre aims to provide services that are affordable, accessible and of high quality. Their services are available to all students enrolled at UC including those in English language and Foundation Studies.

The Centre also offers counselling services with experienced counsellors who cater for the needs of students. They are fully qualified and can help with problems such as loneliness, anxiety, depression, stress, homesickness and relationship problems. Most counselling is short to medium term and no problem is too big or too small for you to bring to us.

For more information go to www.canterbury.ac.nz/healthcentre



Sport and recreation

The UC RecCentre, operated by UC Sport and Recreation, is located on campus and has all the amenities and services you'd enjoy at a commercial gym and more, at a fraction of the price.

Most services are free with your membership, including cardio equipment, weights, general exercise programmes and group fitness (including Zumba).

There is also a sports hall for casual basketball. For an additional fee you can access spin classes, squash, badminton, personal trainers and sport-science testing.

UC Sport and Recreation also runs social and competitive sport leagues, which are free or very low cost. In addition, the Sport Science Centre provides higher-level athletes with quality testing and conditioning services.

For more information go to www.reccentre.canterbury.ac.nz

Fees and financial assistance

New Zealand has a relatively low cost of living compared with many other Western countries. International students can apply for a number of scholarships, are eligible for domestic fees for PhD study and in most cases are able to work to support their studies.

Scholarships

There are number of scholarships available to international students through the University of Canterbury and the New Zealand Government.

In 2011, the University established 24 new undergraduate scholarships valued at NZ\$20,000 per year for up to four years for international students. These are in addition to the 10 UC International Student Undergraduate Scholarships* for top achieving international students who have gained University Entrance in New Zealand. They provide \$5000 towards the fees for a full-fee paying international student's first year of study at UC.

International students who are already studying at another university can apply for one of at least 50 new International Mobility Inbound Study Abroad Awards* valued at up to NZ\$5000 cash each. These awards provide support for any overseas university student who would like to enhance their education and international experience by studying for one or two semesters on UC's Study Abroad programme.

For more information and other scholarships available to international students go to www.canterbury.ac.nz/scholarships

Working in New Zealand

International students who are enrolled in full-time programmes of 12 months or more can work up to 20 hours per week during the year and full-time over the summer holidays. However, you should not rely on this income to cover all your living costs as it is unlikely to be sufficient. Some conditions apply to working in New Zealand and you must have a Variation of Conditions on your student visa to allow you to do this. For more information refer to the Immigration New Zealand website: www.immigration.govt.nz

*Conditions apply – go to www.canterbury.ac.nz/scholarships

International annual tuition fees (2011)			
Programme	Undergraduate (SNZ)	Postgraduate (non-PhD) (SNZ)	PhD (SNZ)
Arts, Social Sciences	\$20,700	\$23,500	\$5,384
Business, Commerce	\$22,200	\$23,700	\$5,636
Engineering	\$31,800	\$30,700	\$6,485
Fine Arts	\$24,600	\$27,600	\$5,890
Forestry Science, Ecology	\$29,800	\$30,700	\$6,485
Law	\$24,100	\$27,300	\$5,636
Music	\$24,600	\$27,600	\$5,890
Physical Education	\$22,000	N/A	N/A
Science (varies depending on subject)	\$24,600 – \$25,800	\$27,600 – \$29,800	\$5,890 – 6,093
Speech and Language Therapy, Audiology	\$29,800	\$29,800	\$6,449
Sport Coaching	\$22,000	N/A	N/A
Teacher Education	\$22,000	\$23,500	N/A

International tuition fees – special programmes (2011)	
Programme	(NZ\$)
Certificate in Foundation Studies	\$19,440
Certificate in English for Tertiary Studies	\$13,325
Study Abroad (flat fee per semester)	\$11,100
MBA fee (15-month programme; additional fees apply)	\$46,000
Master of Engineering in Management (MEM – includes course fee of \$1,760)	\$33,500
Master of Business Management (MBM)	\$38,500
Postgraduate Certificate in Antarctic Studies	\$25,813

Student Job Search (www.sjs.co.nz) is a free employment service for students and UC Careers and Employment (www.canterbury.ac.nz/careers) provides assistance with career planning and job search, and information on graduate vacancies and internships.

Eligibility for domestic fees

International PhD students are eligible to pay tuition fees at the domestic rate provided that they reside in New Zealand and study under a New Zealand visa.

Australian students admitted at any level are permitted to pay the domestic student tuition fee, provided that they study in New Zealand.

**Typical costs for one academic year (February to November). This is an example only – costs will vary from depending on the student's course selection and lifestyle. For more information go to www.canterbury.ac.nz/international/costs

Additional compulsory fees (2012)	
Fee	(NZ\$)
Administration fee	\$100
Student Services Levy	\$630

Costs per year (2011)** – example only	
Costs per academic year	(NZ\$)
Bachelor of Commerce programme (two semesters)	\$22,200
Administration fee	\$100
Student Services Levy (2012)	\$630
Accommodation in halls of residence (includes three meals a day)	\$12,500
Textbooks and supplies (varies with programme)	\$1,000
Personal expenses (entertainment, clothes, sports, travel etc)	\$5,000
Total costs	\$41,415

Preparing to study in New Zealand

Student visa

International students who study in New Zealand for longer than three months must have a student visa. When your application for admission is approved, you will need to contact the appropriate office of Immigration New Zealand to apply for your student visa. If possible, you should try to apply for your student visa three to four months before your classes begin.

We strongly recommend that you seek advice before travelling and get your student visa before leaving your home country.

For full details of student visa requirements, financial requirements, advice on being employed in New Zealand while studying and the reporting requirements go to www.immigration.govt.nz

If you are already in New Zealand on a student visa, and you wish to extend it, you may be able to do this online through UC under the Students Online programme. For more information go to www.canterbury.ac.nz/intstud/visa

Medical and travel insurance

To enrol at the University of Canterbury, international students (including international PhD students) must have appropriate and current medical and travel insurance while studying in New Zealand. This is a legal requirement under the New Zealand Ministry of Education Code of Practice for the Pastoral Care of International Students.

Purchasing private medical insurance

You can be covered by your own medical insurance, but it must meet the requirements listed on the University's website: www.canterbury.ac.nz/international/insurance

If you wish to purchase insurance before you leave home, you must present either a policy from our approved list or apply to have your policy assessed at least four weeks before arrival. Insurance policies that do not meet the standards set by the New Zealand government cannot be accepted. Please refer to our website for further details.



Study areas in the Education Library.

Studentsafe-University insurance

If you have not purchased approved insurance in advance, you can purchase the Studentsafe-University policy when you complete your enrolment in New Zealand. The cost of the Studentsafe-University insurance will be added to your enrolment fees.

The policy meets the standards of the New Zealand Ministry of Education's Code of Practice for the Pastoral Care of International Students.

It covers students intending to enrol at UC from the time they leave home (up to 31 days prior to enrolment). So, if you intend to enrol at UC you do not need to purchase your own insurance before you leave home. The policy covers transit stopovers, but does not cover stopovers regarded as holidays.

For details of the Studentsafe-University policy go to www.studentassist.co.nz/sf_university.asp

Also refer to the Studentsafe-University brochure www.studentassist.co.nz/pdf/UOC_broc.pdf

Pre-existing medical conditions are conditions that you have before you enrol in the plan and can extend to conditions you were aware of but did not seek treatment for. These conditions are not automatically covered by Studentsafe-University so you must check with the insurer (Vero) as to whether your pre-existing condition will be covered by that policy. Dental treatment in New Zealand is expensive and is generally not covered by insurance.

Smoke-free campus



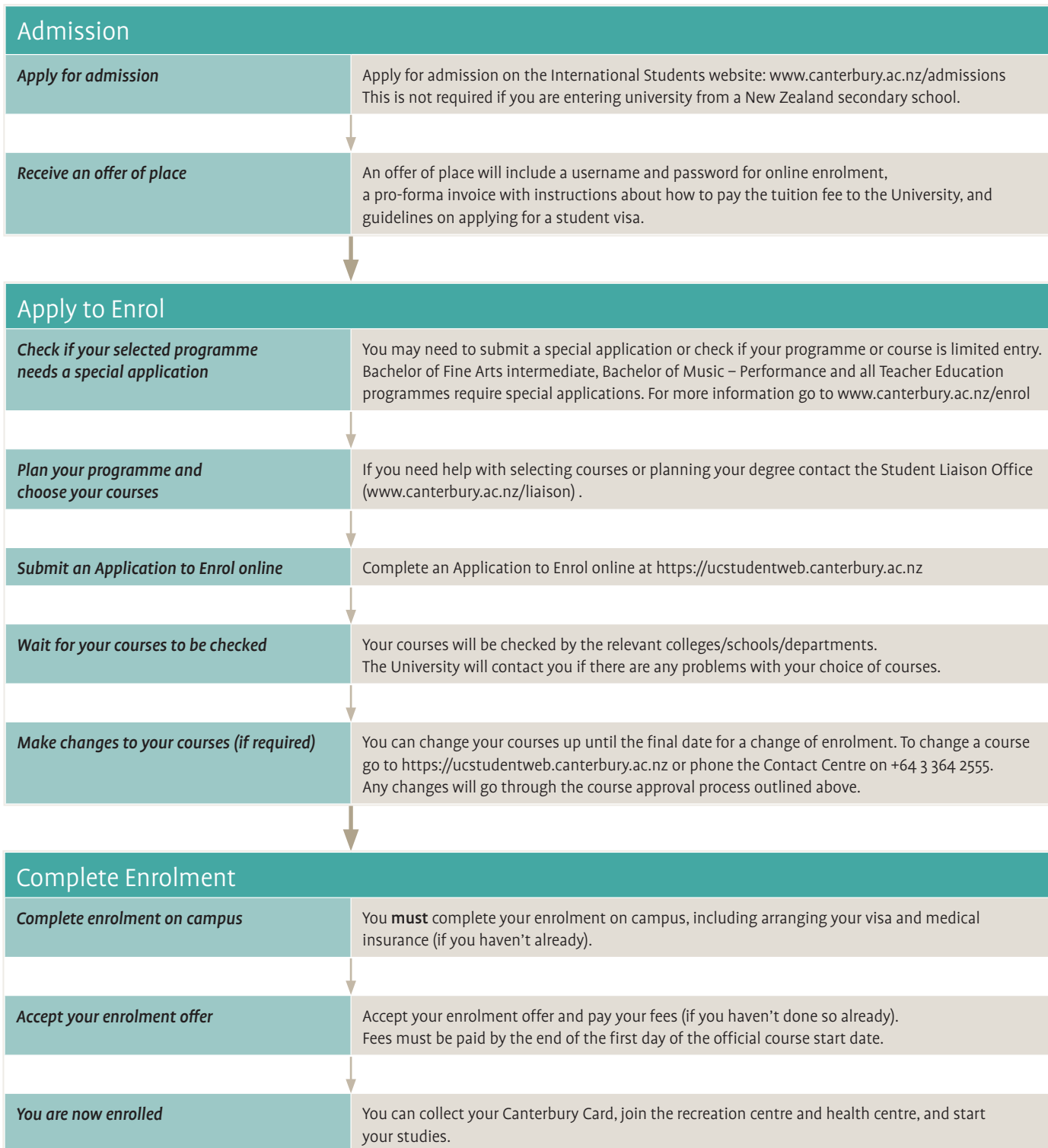
Smokefree Campus

The University of Canterbury is proud to be a completely smoke-free campus. This means that smoking is not permitted on any University grounds including regional campuses,

field stations and other premises. The University promotes healthy lifestyles and has adopted this policy to ensure that all staff, students and visitors can experience a healthy, smoke-free environment.

The full policy can be reviewed in the UC Policy library: www.canterbury.ac.nz/ucpolicy under 'Smoke-free Policy'.

Applying to UC



For more information about studying at UC
get in touch with the UC Contact Centre:

Telephone: +64 3 364 2459

Email: international@canterbury.ac.nz

University of Canterbury

Private Bag 4800

Christchurch 8140

New Zealand

www.canterbury.ac.nz

