

Learning Preparation and Support

English Language and Foundation Studies



Welcome from the Vice-Chancellor



I am delighted that you are exploring what the University of Canterbury has to offer international students. I believe that as a study destination our combination of world-recognised academic programmes and research, wonderful natural environment, and safe, friendly community has few equals anywhere in the world.

To prepare students for undergraduate and postgraduate study at the University we offer academic English language programmes and a Foundation Studies programme. These programmes are taught by well qualified staff and are held on the University campus – often in the same lecture rooms that students will later use when studying for their degrees.

The University of Canterbury is committed to providing a supportive environment for all students. We offer excellent amenities and advisory services.

On behalf of all staff and students, I welcome you to Canterbury and its University.

Dr Rod Carr
Vice-Chancellor



Aerial view of the University of Canterbury campus

English Language programmes



The University's English language programmes prepare students for study at Foundation, undergraduate and postgraduate degree level. The programmes are also designed for people who wish to study English in an academic environment in order to improve their employment prospects and ability to communicate complex ideas and theories in English.

Students do not need to sit external language tests before they study with us. When students arrive on campus they are tested and placed in the course that best suits their ability. From there students can progress through the English language levels until they qualify for entry to their chosen programme*.

General English

General English is offered on the University campus through the University's partner, Christchurch College of English (CCEL). Students are able to improve their English skills before progressing on to academic English.

English for Academic Purposes 1 (EAP1) English for Academic Purposes 2 (EAP2)

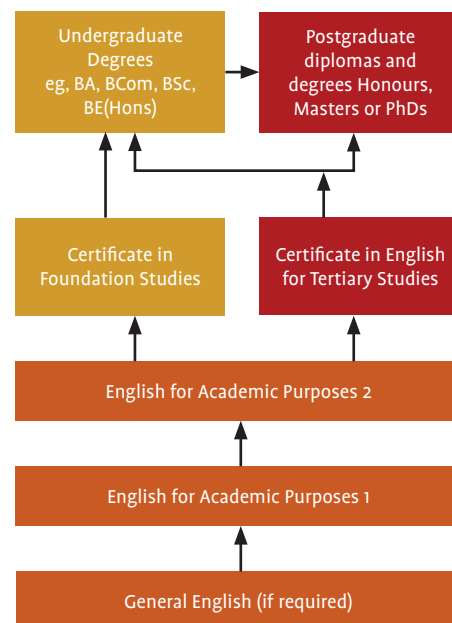
These courses teach students to communicate with accuracy and complete complex academic tasks. Once students have completed EAP2 they are well prepared to enter either the Certificate in English for Tertiary Studies or the Certificate in Foundation Studies.

Each course comprises two 7-week modules. Students who have made exceptional progress may advance to the next level after 7 weeks.

Certificate in English for Tertiary Studies (CertETS)

CertETS is a 26-week programme designed for students who meet the academic entry requirements for undergraduate and postgraduate study but not the English language requirements. It enables students to improve their English language proficiency, study skills and understanding of a western analytical approach to study.

The qualification is accepted by New Zealand universities as an English language entry standard. Students planning to continue their studies at another New Zealand university should check if that institution has additional departmental English language entry requirements.



Entry requirements

Undergraduate stream:

- IELTS 5.5 (academic module), with no band score lower than 5.0; or
- a pass in the internal English language entry test; or
- a C grade at EAP2.

Postgraduate stream:

- IELTS 6.0 (academic module), with no band score lower than 6.0; or
- a pass in the internal English language entry test; or
- a B grade at EAP2.

For further information including programme structure, fees, start dates, accommodation, student visa, medical and travel insurance, go to www.lps.canterbury.ac.nz/bridging/elc

** Please note that some specialist programmes eg, Teacher Education may require students to provide evidence of an approved English language test such as IELTS. Please contact us if you need more information.*

Certificate in Foundation Studies

The Certificate in Foundation Studies is a 26-week programme that assists students to meet the basic entry requirements for undergraduate study at New Zealand universities. The programme prepares students to meet the academic and English language entry requirements for most undergraduate degree programmes offered by the University of Canterbury.

The programme provides excellent preparation for degree study. Students are also able to interact academically and socially with staff and students from different cultures.

Foundation Studies students develop English language and study skills as well as gain an introduction to subjects in their chosen academic field.

Subject stream options:

- Arts (Humanities and Social Sciences)
- Business
- Physical Science *
- Biological Science

* Prospective Engineering students must undertake the Physical Science stream

The programme assists students to:

- develop proficiency in the English language and its use for academic purposes;
- develop the skills necessary to participate actively and effectively in lectures and tutorials;
- gain an understanding of lecturers' expectations regarding written assignments and tests;
- increase their knowledge of subjects they intend to study as an undergraduate student at the University;
- develop an understanding of New Zealand culture and society.

The Foundation Studies programme encourages independent learning. Students can choose some of the courses they undertake from a wide range of electives so they can study what interests them. Students also have the opportunity to study with New Zealand students.

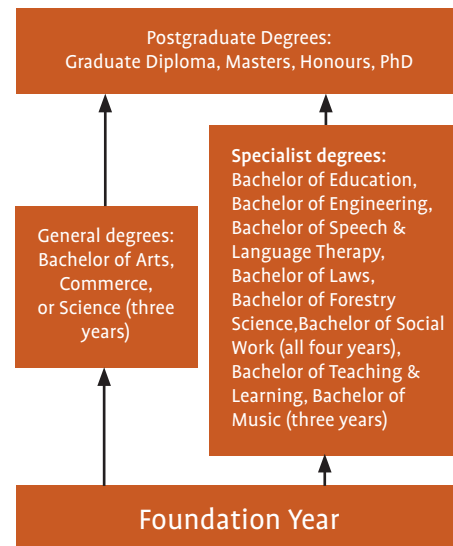
There are three start intakes each year (February, June and October)* which allow students to start Foundation Studies soon after completing their English language study. Each intake consists of two semesters. Students who undertake the February intake of Foundation Studies may,

after completing the programme, undertake Summer School courses that they can credit to their degree.

The Certificate in Foundation Studies is accepted as an entry standard by New Zealand universities. Students planning to continue their studies at another New Zealand university should check if that institution has additional departmental English language entry requirements.

For further information including programme structure, details of fees, start dates, accommodation, student visa, medical and travel insurance, go to www.lps.canterbury.ac.nz/bridging/foundation

**Prospective engineering students should plan to enrol in either the February or June intakes of Foundation Studies. They must first seek advice if they intend to enrol in the October intake.*



Structure of the Certificate in Foundation Studies

Foundation Studies consists of two 13-week semesters

Semester One: Compulsory subject and choose 1 subject and 1 elective	Semester Two: Compulsory subject and choose 3 electives
<p>Compulsory subject English Language</p> <p>Subject streams The World of Science The World of Business Introduction to the Humanities and Social Sciences</p> <p>Electives Mathematics Part One Statistics: Data and Probability History: Understanding the 1960s The Treaty of Waitangi Pacific Peoples and Cultures Information and Communication Technology Invitation to Law*** Special Topic*</p>	<p>Compulsory subject Academic Communication and Study Skills (Foundation Studies)</p> <p>Electives Social Sciences and Humanities Texts and Culture: Reading, Viewing, Writing History: Understanding the 1960s** Individuals in Society The Treaty of Waitangi Pacific Peoples and Cultures Teacher Education and Educational Studies Statistics: Data and Probability Statistics: Probability Distributions and Inference Mathematics Part One or Two Environmental Science Information and Communication Technology</p> <p>Physical Science and Biological Science Chemistry (Foundation Studies) Physics Biology Environmental Science Statistics: Probability Distributions and Inference Mathematics Part Two</p> <p>Commerce Accounting Economics Strategic Management and Marketing Statistics: Probability Distributions and Inference Mathematics Part Two</p>
<p><i>*Special Topic: this may include degree courses in specialist fields such as other languages, Music, etc on a case-by-case basis.</i></p> <p><i>**History is not offered in the October semester</i></p> <p><i>***Invitation to Law: this course is only available in the October semester.</i></p>	

Why study at the University of Canterbury?



Top ranked research university

Founded in 1873 by scholars from Oxford and Cambridge, the University of Canterbury is recognised internationally for excellence in teaching and research.

Academic Programmes

UC offers a wide range of undergraduate and postgraduate degrees. Undergraduate degree programmes are available in Arts (Humanities and Social Sciences), Commerce, Education (Teaching), Engineering, Fine Arts, Forestry, Law, Music, Science, Speech and Language Therapy, Social Work and Sport Coaching. Postgraduate courses range from graduate and postgraduate diplomas, honours, master's degrees based on a combination of course work and research, and purely research-based doctorates.

Location

The University is located in Christchurch, the largest city in New Zealand's South Island. The city has a population of around 400,000, the majority of whom are native English language speakers. This provides an excellent learning environment for students intending to improve their English language skills. Christchurch is the most affordable major New Zealand city to live in and is also the easiest to get around. The University is 20 minutes from the city centre and 10 minutes from Christchurch International Airport. There are excellent beaches, parks, reserves and golf courses, and several ski fields within an hour and a half's drive of the city.

International Students

The University of Canterbury has been host to thousands of international students over the last 50 years, and graduates of the University are leaders in business and society around the world. There are over 17,000 students on campus, of which 1,700 are international students from more than 70 countries enrolled in a wide variety of programmes.

Opportunity to fast track

Students undertaking English language courses who perform very well may be able to advance to the next level of study after completing only half of their course. Similarly, Foundation Studies students who demonstrate excellence in a subject may be permitted to study degree courses as part of their programme.

Access to University facilities

Students have access to all University facilities such as libraries, computer labs, language labs, the medical centre and sports facilities.

Help and support

The University has a team of experienced student advisors who provide caring and friendly support to all international students on campus. Counselling and emergency support is available at any time. Social events are arranged throughout the year and students are encouraged to take part so they can practice their English and make new friends.

Orientation programme

An orientation programme is held for new students the week before classes start. During this week students are provided with information they need in order to adapt to life and study at UC.

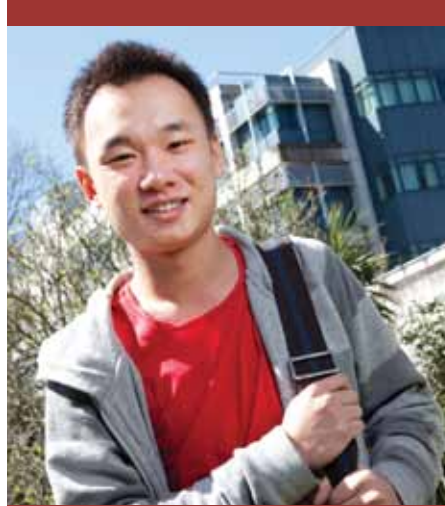
Academic reports

Students receive regular academic reports and academic counselling. If English Language students tuition fees are paid by a sponsor (eg, parents or an employer), we will email reports to them regularly. The report shows academic progress and attendance record.



“The Foundation Studies classes are small and the teachers are friendly and they helped me improve my academic writing and study skills for my Commerce degree.”

Susan Ye *China*



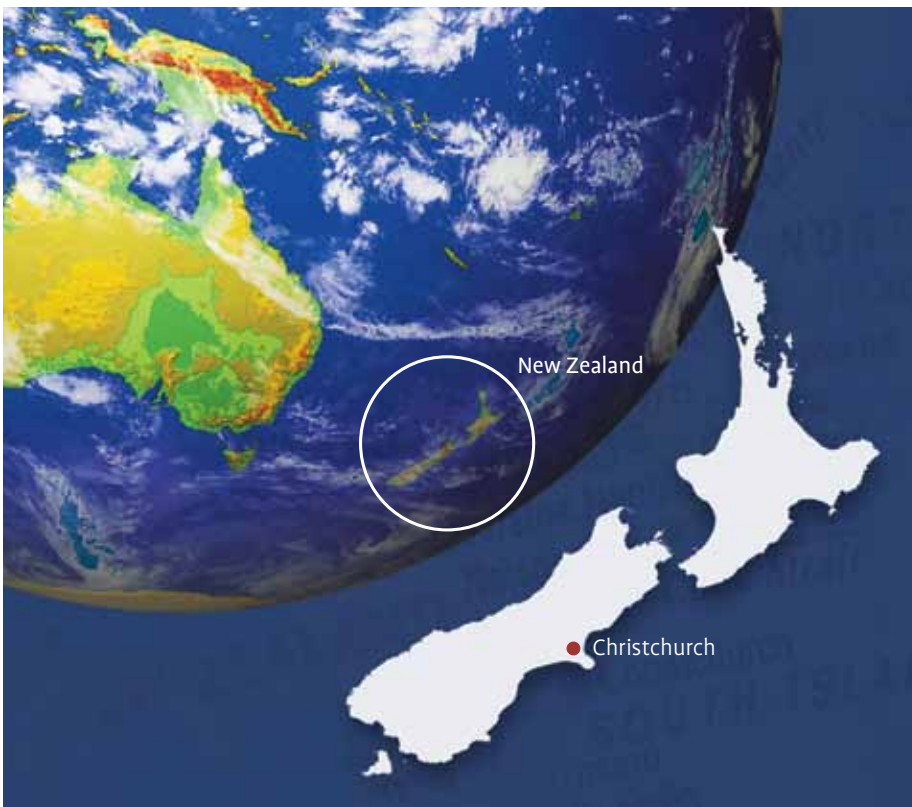
“The Foundation Studies programme at UC exposed me to university style of teaching and learning and this really prepared me well for my studies in my Engineering degree.”

Wei Kiat Chai *Malaysia*



“The Certificate in English for Tertiary Studies (CertETS) was just what I needed to refresh my English Language skills before embarking on my postgraduate studies in Forestry Science at UC.”

Adriana Sau *Indonesia*



Admissions and Enrolment Office

Student Services
University of Canterbury
Te Whare Wānanga o Waitaha
Christchurch 8140
New Zealand

Phone: +64 3 364 2459
Fax: +64 3 364 2171

Email: elc@canterbury.ac.nz or
foundation@canterbury.ac.nz

www.canterbury.ac.nz