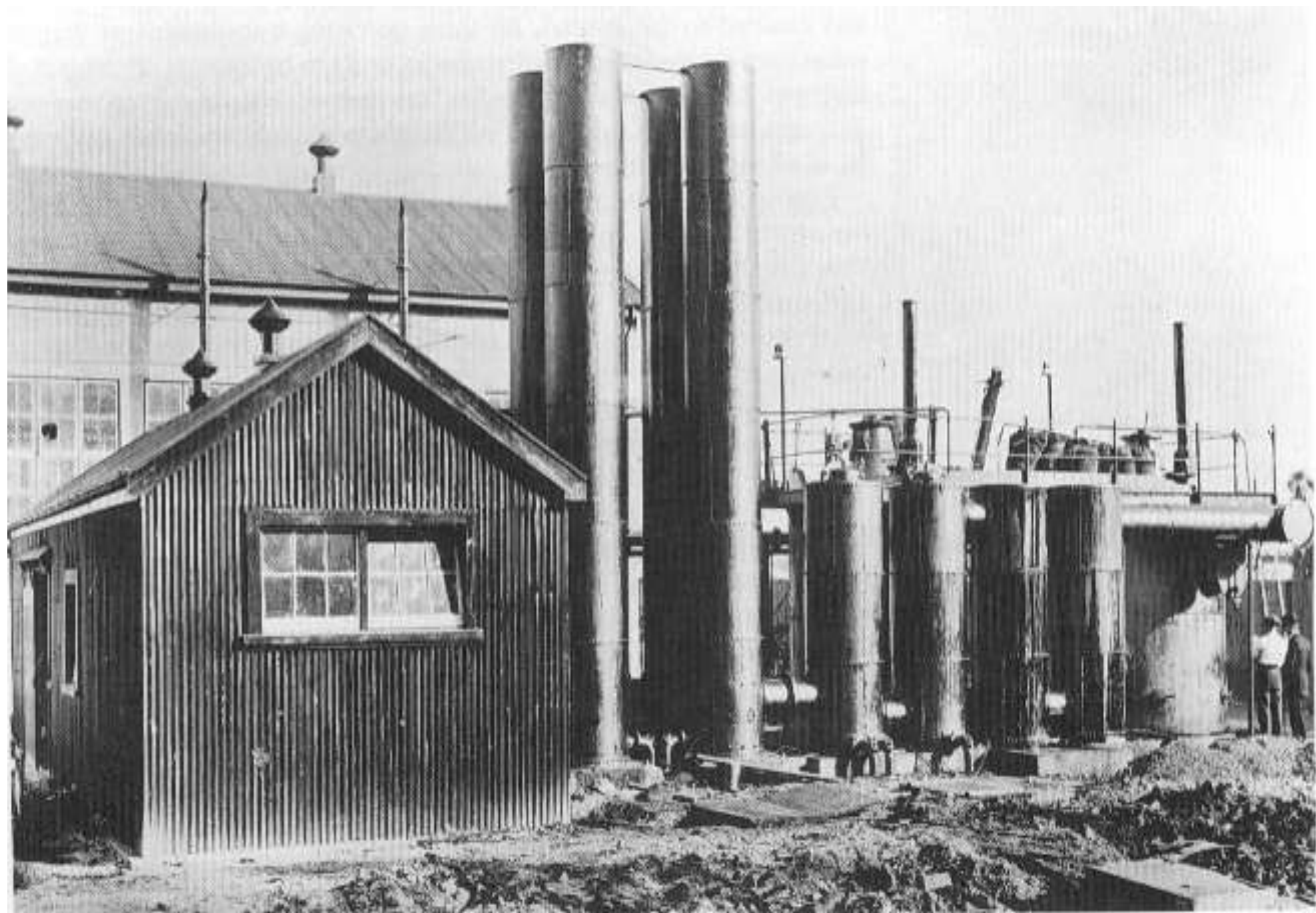


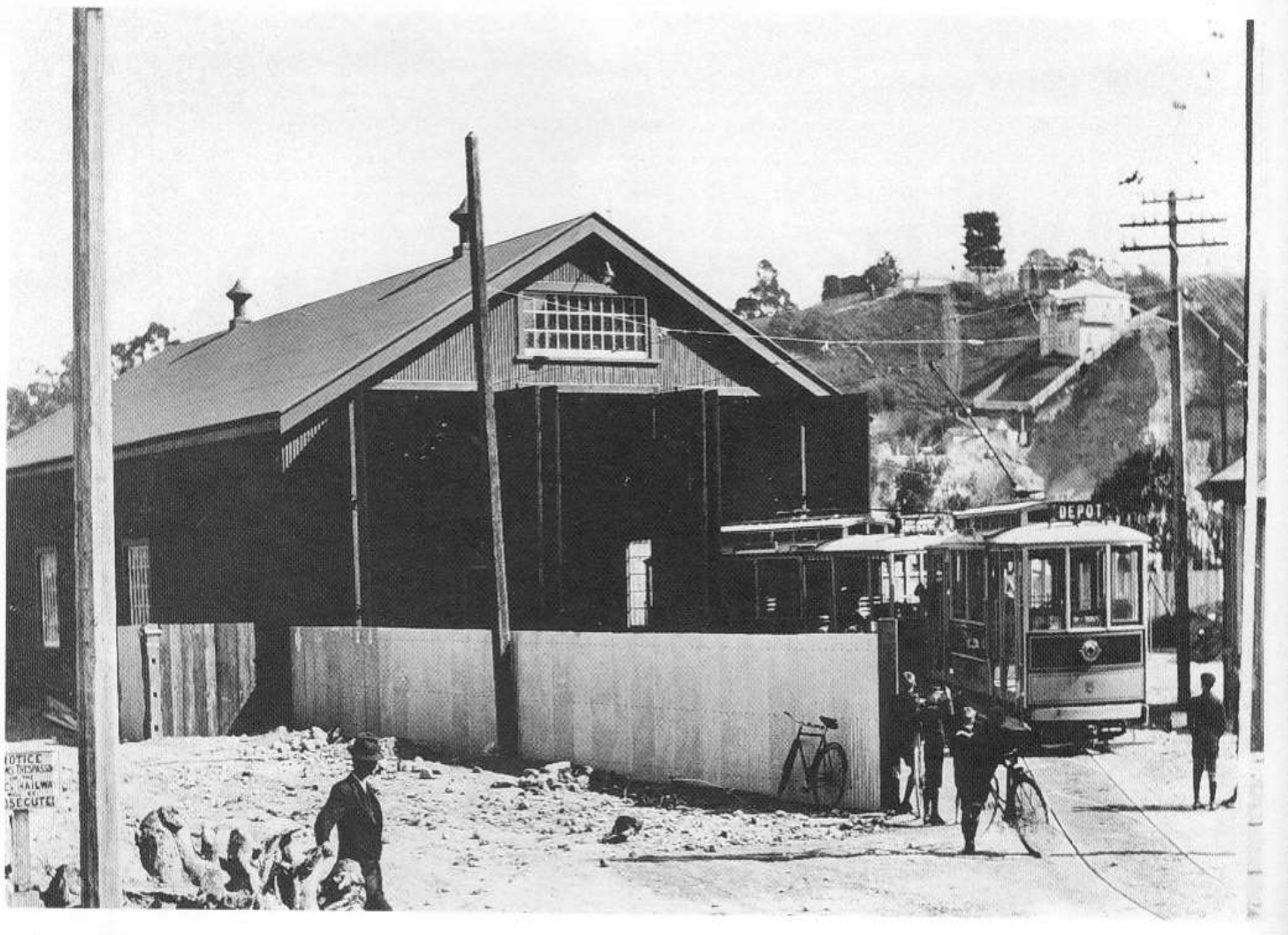
A world map showing the locations of various gasification projects. Red dots indicate project sites, with a high concentration in the Pacific region, particularly around New Zealand and the Philippines. Blue lines represent gasification technology licenses or projects, radiating from New Zealand to other parts of the Pacific and Southeast Asia. The map is framed by a thick black border.

The Enigma of Gasification

Cinderella or Princess Technology?

Doug Williams
Fluidyne Gasification
doug.williams@orcon.net.nz



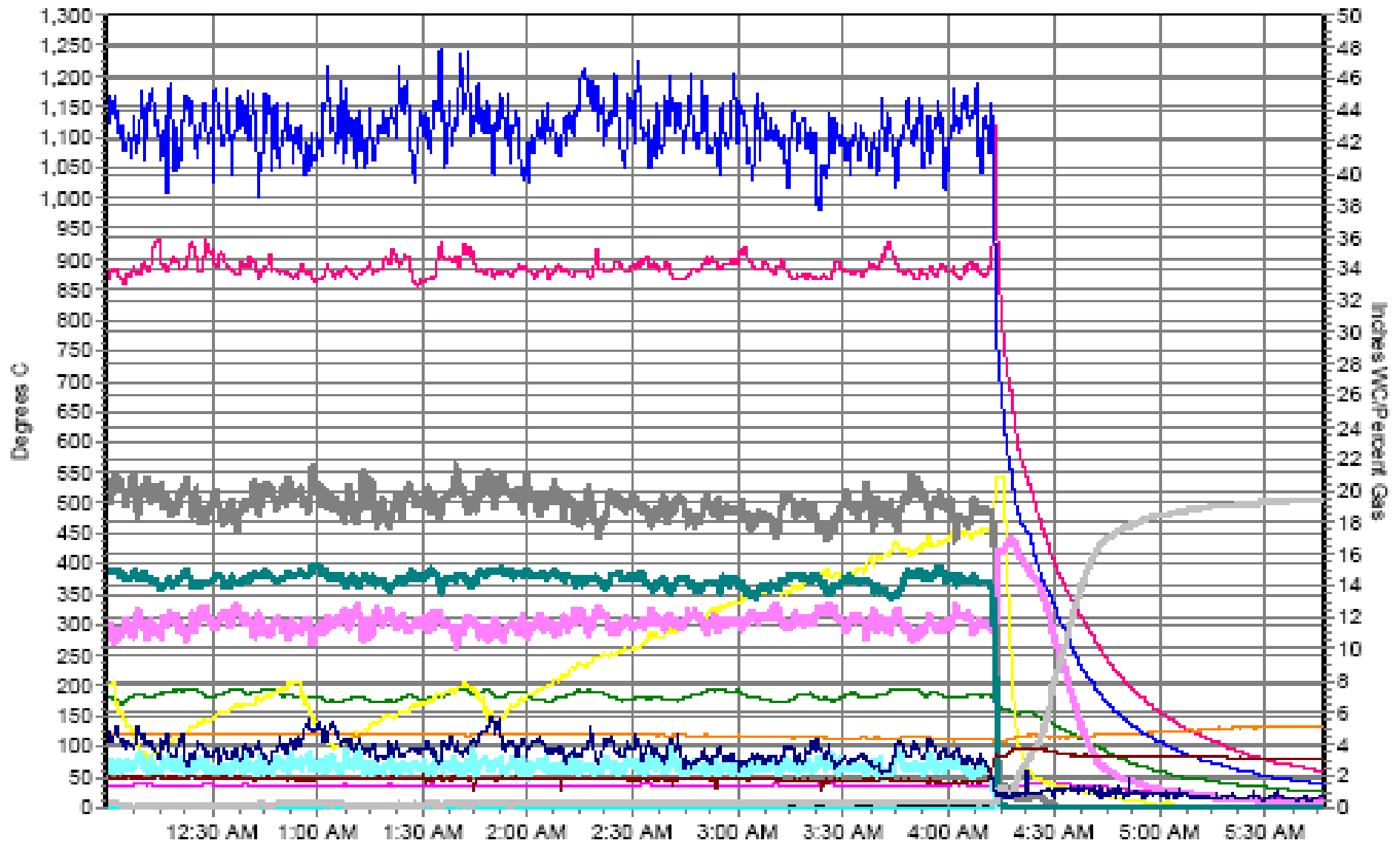


NOTICE
NO TRESPASS
ON THE
RAILWAY
PROPERTY
OF THE
STATE OF
HAWAII





Gasifier Run Data for 1/16/2011



CondOutTemp	GrateTemp	InputAirTemp	FuelAdded
FilterDiffPressure	StandardGasFlow	ThroatTemp	PercentCH4
PercentCO	PercentCO2	PercentH2	PercentO2
GrateDiffPressure	NozzleDiffPressure		







Collaborative Biochar Research Initiative

John Miedema, Thompson Timber, Philomath, OR

Markus Kleber, Oregon State University, Corvallis,
OR







PNW BIOCHAR INITIATIVE

Academics from fields such as: Agriculture, Soil Science, Forestry, Engineering, Economics, Ecology, Chemistry and Physics

Industry / Private Sector: Agriculture, timber, energy, carbon markets, environmental services, technology and equipment suppliers, certification agencies and a host of potential users and producers of Biochar

Government: Federal ie: USDA, DOE, Legislators and Tribes, and State ie: Departments of Ecology, Energy, Forestry and Agriculture and Local County Legislators

NGOs in the fields of Science, Environment, Wildlife, Energy and Social Policy



