

2025 Ako



Teaching

Ako: Bachelor of Teaching and Learning

Graduate Diploma in Teaching and Learning

Postgraduate Diploma in Teaching and Learning

Master of Teaching and Learning
(Primary Education or Secondary Education)



TOP 250
*in the world for Education
 (QS World University
 Rankings by Subject, 2023)*



Ngā Kai o Roto | Contents

Kia ora

- 2 Life in Ōtautahi Christchurch
- 4 Study Teaching at UC
- 6 Kupu pātahi | Common terms

Kaupapa | Subjects

14 Subjects

Tohu | Qualifications

- 8 Ako: Bachelor of Teaching and Learning
- 9 Graduate Diploma in Teaching and Learning (Early Childhood)
- 10 Graduate Diploma in Teaching and Learning
- 11 Postgraduate Diploma in Teaching and Learning
- 12 Master of Teaching and Learning

Ka whai ake nei Next Steps

- 18 How do I apply?
- 19 Key dates
- 20 Tautoko | Get support
- 21 Whakapā mai | Contact us

Published Pēpuere | February 2024. Information may be out of date at the time of print. Please check the website.
 The University's official regulations are at canterbury.ac.nz/regulations

Front cover: In the design Makaurangi, a fingerprint, the three elements are representative of Ngā Kete o te Wānanga, the three baskets of knowledge, with the lines and koru a symbol of mana and mana whenua. This design originates from traditional whakairo (carving) and kōwhaiwhai designs which can often be seen on the rafters inside whareniui (meeting house).

Rainbow Diversity Support



UC is proud to partner with Ngāi Tūāhuriri and Ngāi Tahu to uphold the mana and aspirations of mana whenua.



Kia ora

Aotearoa needs more teachers and educators who are passionate about supporting students throughout their learning journey.

Our teaching subjects are tailored to keep up with the evolving needs of students and society. All our programmes incorporate Māori language and practices, and we also have a separate bilingual programme for those who want to champion te reo Māori and educate others.

Take a look inside this brochure to learn about flexible study and placement options for teaching available at UC.

For any questions, contact the Future Students Advisor to get more information. See **page 21** for contact details. Please recycle this brochure or pass it to someone who wants to learn more.



Dawn
Bachelor of Teaching and Learning (Primary)



Source:
ChristchurchNZ



*11% cheaper than Wellington
15% cheaper than Auckland*

Life in Ōtautahi Christchurch

It is easy to get around in Ōtautahi Christchurch, whether you walk, bike, ride the bus, or drive. UC is uniquely situated in Ōtautahi — with an open green campus, beautiful gardens, and a river running through.





365+

*walking, hiking, and mountain
biking tracks*

- 1. UC campus**
- 2. University of Canterbury Student Association (UCSA)**
- 3. UC accommodation**
- 4. Supermarket and restaurants**
15-minute walk from UC
- 5. Westfield shopping mall**
5-minute drive from UC
- 6. Central business district (CBD)**
10-minute drive from UC
- 7. Port Hills**
20-minute drive from UC
- 8. Beach**
20-minute drive from UC
- 9. Airport**
10-minute drive from UC
- 10. UC sports field**





6-16 WEEKS
spent in teaching placements in schools, early childhood settings, and kura



Study Teaching at UC

Aotearoa needs more teachers

As teachers you get to shape the lives of children, and Aotearoa needs more teachers (including Māori-medium kaiako) in subjects like maths, sciences, technology, and te reo Māori.

Our teaching programmes meet the requirements for provisional teaching registration with Matatū Aotearoa | Teaching Council of New Zealand.

Study pathways

If you are starting tertiary study for the first time, we have Ako: Bachelor of Teaching and Learning. We also have graduate and postgraduate programmes if you already have a degree in another area.

There is flexibility in studying on campus or by distance, full-time or part-time.

Teach who you are

At UC, we actively challenge you with questions, scenarios, and problems, so that you can learn the way to teach that is right for you. This means finding the best tools and techniques for you to engage with a diverse range of tamariki. Ultimately, you'll bring your personality and life experiences to the classroom in your own unique way.

“I love doing it online because you can do it whenever you want. The lecturers are really keen to help, and they really put a focus on the distance students. They make it a point to know who we are and make sure we’re supported.”

Dawn
 Bachelor of Teaching and Learning (Primary)

Cultural competence

Understanding and incorporating cultural identity is essential to your teaching practice and will help you better connect with all kinds of students and their communities. You will learn about Te Tiriti o Waitangi, te reo Māori me ōna tikanga Māori (Māori language, values, protocols, and culture) through dedicated courses as well as kaupapa Māori teaching methods and approaches. Pacific education is explored throughout the degree with a specialist course about cultural competencies for supporting Pacific learners.



Clubs culture

With over 160 active clubs on campus, you can pursue whatever interests you outside of your studies or you can try something different. This is a great way to meet other students and feel supported by your peers.

The Education Society Mātauranga Porihanga (EdSoc) is a social and academic club for students studying teaching or education. EdSoc events can include Q&As, pre-placement panels, mentoring and further professional development.

ucsa.org.nz/clubs

Join our Education whānau

Te Kaupeka Ako | Faculty of Education in Rehua will be your home base for most of your studies here. Students and staff enjoy coming together for morning karakia and waiata during term time. It's a great way to improve your reo and start your day. You will join an education and teaching community that encourages you to collaborate with other students to become the kind of teacher you want to be.

Become work-ready

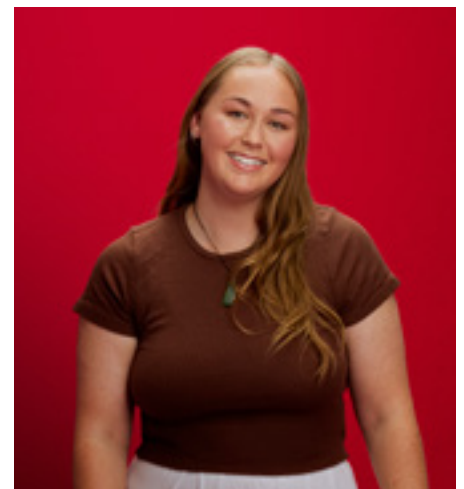
From your first year onwards, you will take on professional placements in schools, early childhood centres, and kura to build your teaching and management skills, gain valuable classroom experience and confidence engaging with students.

An associate teacher will mentor you and teach you how to manage a classroom, create resources, and develop lesson plans. You will face all sorts of learning environments throughout your career, so it's important to gain practical skills and strategies to be able to deal with these situations.

Work-Integrated Learning

Set yourself apart by engaging with Work-Integrated Learning at UC. As part of your degree, you are able to apply what you learn in your courses to practical settings like internships, projects, and competitions with industry.

This hands-on approach not only enriches your education, but also helps you develop essential skills, gain valuable industry insights, and build a professional network, — so you can put your best foot forward as you transition into work.



“I’ve wanted to be a teacher since I was five. I’m also passionate about changing our high school education system for the better and helping youth be the best people they can be.”

Stacey
Ngāi Tahu
Bachelor of Arts in Political Science and International Relations with a minor in Classics, and Master of Teaching and Learning (Secondary)

Kupu pātahi | Common terms



Degrees

Degrees are a type of qualification you can study at university — there are several types of qualifications varying in level of study and length of time, such as:

Bachelor's degrees

A bachelor's degree is an undergraduate qualification that usually takes 3–4 years to complete. We offer many bachelor's degrees.

Certificates and Diplomas

If you are unable to study a full degree, or want to add some additional study to your degree, you could complete a certificate or diploma. These have fewer courses and are often completed in 6 months to a year.

Subjects

Subjects are areas you can study in your degree. Some subjects you can continue from secondary school such as Music, Geography, English, while some you can start new at UC eg, Primary Teaching, Linguistics, Psychology.

Courses

A course is a specific topic within a subject, for example a teaching reading and numbers course in the Primary Teaching subject. This involves lectures, assignments, and other forms of study. Your degree is made up of multiple courses.

Points

Each course has a points value — 1 point is equivalent to 10 hours of study. You will need to complete a certain number of points overall to successfully finish your study.

Semester

The academic year is split into three periods of study. One semester is the equivalent of two terms at secondary school.

- Semester 1: February – June
- Semester 2: July – November
- Summer: November – February.

NOTE: Graduate and postgraduate teaching programmes may start late January.

More information

Please contact the Future Students Office for degree and subject planning advice. See **page 21** for contact details.

futurestudents@canterbury.ac.nz

Tohu Qualifications



Ako: Bachelor of Teaching and Learning. BTchLn

Ako: Bachelor of Teaching and Learning – example degree structure

Year 1

AKOT 100	AKOT 101	AKOA 161	100 Level	100 Level	100 Level	100 Level	100 Level	100 Level
----------	----------	----------	-----------	-----------	-----------	-----------	-----------	-----------

Year 2

AKOA 261	AKOA 262	200 Level	200 Level	200 Level	200 Level	200 Level	200 Level
----------	----------	-----------	-----------	-----------	-----------	-----------	-----------

Year 3

300 Level	300 Level	300 Level	300 Level	300 Level	300 Level	300 Level	300 Level
-----------	-----------	-----------	-----------	-----------	-----------	-----------	-----------

Zero-points, zero-fees courses
 Compulsory courses
 Endorsement courses

Each small block represents a 15-point course. However, some courses may be 30 points or more.

If you are inspired by the world around you and wish to make a positive difference in the lives of young people, then a career in teaching could be for you.

Ako: Bachelor of Teaching and Learning prepares you for a professional teaching career in whare kōhungahunga (early childhood) or kura tuatahi (primary) settings.

Study information

Endorsements
Early Childhood Education
Primary Education
Mātauranga Māori (bilingual programme)

How to apply:

Admission requirements include English language competency, referees' reports, an interview, short literacy and numeracy tests, and a police check.

Our selection for entry is based on your academic ability, involvement and interest in working with children, community involvement, communication skills, and other personal qualities.

For the Mātauranga Māori programme, a hui alongside your whānau will determine your starting point based on your te reo Māori proficiency. If you have limited te reo Māori proficiency, you can complete Summer School te reo courses before starting the programme.

Applications close **1 December**.

Compulsory courses

Courses	
AKOT100 (0-points)	Navigating Study at Tertiary Level – Being a Successful Learner
AKOT101	Ngā Tāngata o Aotearoa: Te Mana o Te Tiriti o Waitangi
AKOA161	Mana Ako: Practice Exploration 1
AKOA261	Mana Ako: Practice Exploration 2
AKOA262	Mana Ako: Practice Exploration 3

Highlights

- You will take Te Tiriti o Waitangi and te ao Māori courses, so you can incorporate bicultural knowledge and competence into teaching practices.
- Professional placements in schools, kura, and early childhood centres throughout the degree.
- Learn from lecturers who use the latest research in their teaching.
- Flexible study options – choose to study on campus in Ōtautahi Christchurch, or by distance, full-time or part-time.

Career ready

- Meet the requirements to apply for provisional teacher registration with Matatū Aotearoa | Teaching Council of New Zealand.
- This degree was developed in partnership with iwi and educators to prepare new teachers to be creative and innovative leaders in the profession.
- You will gain transferable skills such as management, collaboration, problem-solving, and resilience.
- Graduates have gone on to teaching and managing positions in early childhood centres, kura, primary, intermediate, middle, Māori medium, and area schools.

Graduate Diploma in Teaching and Learning (Early Childhood). GradDipTchLn(EC)

Graduate Diploma in Teaching and Learning (Early Childhood) – typical diploma structure

Year 1



■ Professional Studies
 ■ Professional Practice
 ■ Curriculum studies

Each small block represents a 15-point course.

Early childhood teaching is a challenging and satisfying career where you can make a difference in children’s lives. Through guided play, you can help children gain the skills they need for healthy intellectual, emotional, and physical development.

The Diploma meets Matatū Aotearoa Teaching Council of New Zealand graduating teachers standards requirements, and you may be eligible for provisional registration with the Council as a teacher in Aotearoa New Zealand.

Study information

How to apply:

The Graduate Diploma of Teaching and Learning (Early Childhood) is for anyone currently holding any bachelor’s degree and wants to become an early childhood teacher.

Admission requirements include English language competency, referees’ reports, an interview, short literacy and numeracy tests, and a police check.

Our selection for entry is based on your academic ability, involvement and interest in working with children, community involvement, communication skills, and other personal qualities.

Applications close **1 December**.

Compulsory courses

Courses	
TEPI361	Becoming a professional teacher
TEPI362	Being a professional teacher
TEPP361	Professional Practice 1
TEPP362	Professional Practice 2
TECE358	Curriculum Design
TECE359	Te Reo me ngā Tikanga Māori
TECE361	Holistic Development, Learning and Culture
TECE362	Curriculum and Pedagogy for Infants and Toddlers
TECE364	Pedagogy of Play
TECE365	The Intentional Teacher

Highlights

- The chance to teach infants, toddlers, and young children in this key developmental phase of life.
- Multiple placements in early childhood and community centres throughout your studies to gain real teaching experience.
- Flexible study options on campus in Ōtautahi Christchurch, or by distance.
- You’ll also learn about Te Whāriki, the Early Childhood curriculum, to prepare you for the teaching profession.

Career ready

- Meet Matatū Aotearoa | Teaching Council of New Zealand graduating teachers’ standards requirements and are eligible to apply for registration as a teacher in Aotearoa.
- Gain transferable skills in management, communication, coordination, responsibility, and organisation.
- Graduates have gone on to owning and operating their own early childhood businesses, and work in various roles within early childhood care, and government agencies.

Graduate Diploma in Teaching and Learning. GradDipTchLn

Teaching is a career for people who are energetic, creative, enjoy working with people, and are committed to making a positive difference for children and adolescents.

The Graduate Diploma in Teaching and Learning gives you the opportunity to gain knowledge of teaching, learners, and curriculum; engage in professional practice in schools; and become part of the teaching profession in Aotearoa New Zealand.

You will be able to hone skills such as communication, critical thinking, planning and design for learning, and develop bicultural competence so that you go on to become an attentive and adaptable educator who meets the needs and aspirations of all learners.

Study information

Endorsements
Primary Education
Secondary Education

How to apply:

Students with an Aotearoa New Zealand bachelor's degree (or other qualifications of an equivalent standard) are able to apply for the GradDipTchLn.

If you are interested in entering the Secondary Education endorsement, you are required to have prior knowledge in a subject relevant to the high school curriculum, like Te Reo Māori, English, Mathematics, Chemistry, or History.

Admission requirements include English language competency, referees' reports, an interview, short literacy and numeracy tests, and a police check.

Graduate Diploma in Teaching and Learning – example degree structure

Year 1



■ Professional Studies ■ Professional Practice ■ Courses towards Primary or Secondary Teaching

Each small block represents a 15-point course. However, some courses may be 30 points or more.

Our selection for entry is based on your academic ability, involvement and interest in working with children, community involvement, communication skills, and other personal qualities.

Applications close **1 December**.

Alternative Entry Pathway

UC offers an alternative pathway into the Graduate Diploma in Teaching and Learning (Secondary endorsement) in Technology and Te Reo Māori. See **page 18** to learn more, and talk to our Student Advisors to find out if this pathway is for you.

Compulsory courses

Courses	
TEPI313	Professional Learning and Inquiry 1
TEPI314	Professional Learning and Inquiry 2
TEPI315	Understanding Every Learner: Intercultural and Inclusive Education
TEPI316	Tō tātou reo, ā tātou tikanga
TEPP313	Teaching Professional Practice 1
TEPP314	Teaching Professional Practice 2

Highlights

- Future-focused learning in curriculum areas and a commitment to bicultural practices in Aotearoa.
- Multiple placements in schools and communities where you will be able to engage with children and young people.
- Flexibility to study on campus in Ōtautahi Christchurch, or by distance (Primary Education only).

Career ready

- You will gain transferable skills like management, communication, responsibility, and organisation.
- Graduates have gained positions throughout all levels of schooling in Aotearoa.
- Meet Matatū Aotearoa | Teaching Council of New Zealand graduating teachers' standards requirements and are eligible to apply for registration as a teacher in Aotearoa.

Postgraduate Diploma in Teaching and Learning. PGDipTchgLn

The PGDipTchgLn combines research-informed knowledge and critical inquiry with professional placements to prepare you for a career in teaching.

You will have the opportunity to gain knowledge of teaching, learners and curriculum, engage in professional practice in schools, and become part of the teaching profession in Aotearoa New Zealand.

You will learn skills such as communication, critical thinking, planning and design for learning, and culturally responsive teaching.

Study information

Endorsements
Primary Education
Secondary Education

How to apply:

To apply for this programme, you will need an Aotearoa New Zealand bachelor's degree with a B Grade Point Average in your 300-level courses (or qualifications of an equivalent standard).

If you are interested in entering the Secondary Education endorsement, you are required to have prior knowledge in a subject relevant to the high school curriculum, like Te Reo Māori, English, Mathematics, Chemistry, or History.

Admission requirements include English language competency, referees' reports, an interview, short literacy and numeracy tests, and a police check.

Our selection for entry is based on your academic ability, involvement and interest in working with children, community involvement, communication skills, and other personal qualities.

Applications close **1 December**.

Postgraduate Diploma in Teaching and Learning (Primary) – typical diploma structure

Year 1

TEPI 413	TEPI 415	TEPI 416	TEPI 614	TEPP 413	TEPP 414	TECP 423	TECP 424	TECP 425	TECP 426
----------	----------	----------	----------	----------	----------	----------	----------	----------	----------

Professional Studies Professional Practice Primary Education Endorsement

Postgraduate Diploma in Teaching and Learning (Secondary) – typical diploma structure

Year 1

TEPI 413	TEPI 415	TEPI 416	TEPI 614	TEPP 413	TEPP 414	TECS 433	TECS 434	TECS 435	TECS 436 or 437 ¹
----------	----------	----------	----------	----------	----------	----------	----------	----------	------------------------------

Professional Studies Professional Practice Secondary Education Endorsement

¹Select TECS436 or TECS437; or a TECP (primary level) course; or another approved postgraduate course that supports teaching.

Each small block represents a 15-point course.

Compulsory courses

Courses	
TEPI413	Professional Learning and Inquiry 1
TEPI415	Understanding Every Learner: Intercultural and Inclusive Education
TEPI416	Tō tātou reo, ā tātou tikanga
TEPI614	Professional Learning and Inquiry 2
TEPP413	Teaching Professional Practice 1
TEPP414	Teaching Professional Practice 2

Highlights

- A programme combination of research-informed knowledge and critical inquiry with practice-based experiences.
- Build on your knowledge of contemporary education and professional practice.
- 80 days of professional practice within schools.
- Flexibility to study on campus in Ōtautahi Christchurch, or by distance (Primary Education only).
- Students with Te Reo Māori or Technology as their specialist subject can study by distance and part-time.

Career ready

- This Diploma is internationally recognised which can lead to overseas teaching opportunities.
- Develop bicultural competence and culturally responsive practice, so you can support the diverse needs of students, and work with family, whānau, iwi, communities, and other education and health professionals.
- Teaching is an excellent background for a wide range of jobs outside of the classroom including, public sector, human services, publishing, policy, advocacy, youth and social work.
- Graduates will meet Matatū Aotearoa Teaching Council of New Zealand teaching standards and are eligible to apply for registration and certification with the Teaching Council as a primary or secondary school teacher.

Master of Teaching and Learning. MTchgLn

The Master of Teaching and Learning is an exciting option for graduates seeking to become primary or secondary teachers who wish to distinguish themselves with a postgraduate qualification.

You will meet Matatū Aotearoa | Teaching Council of New Zealand teaching standards, and will be able to apply for registration and certification as a school teacher.

Study information

Endorsements

Primary Education

Secondary Education

How to apply:

Applicants for the Master of Teaching and Learning programme need a degree in a disciplinary field – such as Mathematics or History – appropriate to teaching and learning in Aotearoa New Zealand, with either:

- a bachelor's degree with a B Grade Point Average or better
- a master's degree
- approval by the Executive Dean of Education of previous academic study that demonstrates your ability to be able to complete a postgraduate-level degree.

The Secondary endorsement of this Master's programme also requires prior knowledge in a subject relevant to the Aotearoa New Zealand secondary school curriculum.

Admission requirements include English language competency, referees' reports, an interview, short literacy and numeracy tests, and a police check.

Master of Teaching and Learning – typical degree structure

Year 1

TEPI 413	TEPI 415	TEPI 416	TEPI 614	TEPI 615	TEPP 413	TEPP 414
----------	----------	----------	----------	----------	----------	----------

Curriculum Studies

■ Professional Studies
 ■ Professional Practice
 ■ Courses towards Primary or Secondary Teaching

Each small block represents a 15-point course.

Our selection for entry is based on your academic ability, involvement and interest in working with children, community involvement, communication skills, and other personal qualities.

Applications close **1 December**.

Compulsory courses

Courses	
TEPI413	Professional Learning and Inquiry 1
TEPI415	Understanding Every Learner: Intercultural and Inclusive Education
TEPI416	Tō tātou reo, ā tātou tikanga
TEPI614	Professional Learning and Inquiry 2
TEPP413	Teaching Professional Practice 1
TEPP414	Teaching Professional Practice 2
TEPI615	Research for Teaching

Highlights

- Chance to teach children and youth, and make a significant impact in their learning and development.
- Learn in a digitally enriched learning environment that reflects and supports modern learning pedagogies.
- Enhance your previous knowledge and incorporate it in an educational context.
- One-year programme including two professional placements with local primary or secondary schools.

Career ready

- This Master's programme is internationally recognised which can lead to overseas teaching opportunities.
- Gain transferable skills such as management, communication, coordination, organisation, and leadership.
- Become a teacher with skills that are essential to schools in the 21st century including research-based knowledge and inquiry skills, experiences of contemporary education theory, and professional practice.
- Acquire expertise in teaching and learning for diverse learners in mainstream schools, Māori and Pacific children and youth, English as second language learners, and special learning needs.

Kaupapa Subjects



Early Childhood Teaching

A child's early years have a significant impact on their lifelong development. As an early childhood teacher, you will provide experiences that lay the foundations for later learning.

What will my study involve?

- Gain skills supporting child development and growing their love for learning.
- Placements in early childhood settings to experience teaching young children.
- Build your teaching identity.

Courses

Our Early Childhood qualifications have three components:

Education

Discover the purpose of teaching and learning, child development, assessment, the Aotearoa New Zealand education system, socio-political and cultural contexts, communication skills, information skills, and contemporary issues.

There is a specialised infant/toddlers course in each programme of study, and a strong emphasis on how Te Tiriti o Waitangi is foundational to education in early childhood.

Professional Inquiry and Professional Practice

Learn practical teaching skills and spend time working alongside an experienced early childhood teacher and visiting lecturer. In your qualification, you will be able to experience a variety of early childhood settings.

In the first year of the Ako: Bachelor of Teaching and Learning, placements will be spread over ten days in Semester 1, and four weeks in Semester 2.

In the Graduate Diploma in Teaching and Learning (Early Childhood), there are two blocks of placements (one block of seven weeks in Semester 1, and one block of eight weeks in Semester 2).

Curriculum Studies

Find out about Te Whāriki, the Early Childhood Curriculum, and learn about teaching theory, and how to teach effectively within an integrated bicultural curriculum.

canterbury.ac.nz/courseinfo

Career opportunities

Working in early childhood offers you a challenging, interactive, and rewarding career caring for infants, toddlers, and young children in their important early stages.

From your placements throughout the degree, you will have teaching skills and experiences from a variety of education settings that could also apply to any area working with children and whānau.

Career pathways could include:

- early childhood teaching
- teacher's aide
- advocacy
- government.

canterbury.ac.nz/life/jobs-and-careers

Study Early Childhood Teacher Education:

- Ako: Bachelor of Teaching and Learning
- Graduate Diploma in Teaching and Learning (Early Childhood)

Mātauranga Māori

The Mātauranga Māori programme is open every two years, with the next intake commencing in 2025.

Mā te ara Mātauranga Māori kei Te Kura Whakangungu Kaiako koutou e whai mōhiotanga mō ngā mahi o te kaiako kei ngā whare kōhungahunga me ngā kura tuatahi, mai i te taumata reo 2 (51%+ te reo Māori). Ka oti tēnei tohu i a koe, kei a koe ngā pūkenga whakaako ki rō Kura Aunoa / Kura Auraki, kei reira e whakanuia ana te reo Māori me ōna tikanga, ngā mōhiotanga o ngā take kākanorua rua me ngā ahurea whakamana i te tipu mai o te tamaiti.

The Mātauranga Māori Initial Teacher Education pathway will equip you to work in whare kōhungahunga (early childhood) and/or kura tuatahi (primary) settings working at level 2 (51–80% te reo Māori immersion) or higher. A graduate of the Mātauranga Māori programme has the ability to work in bilingual English medium educational settings, where knowledge of te reo Māori me ōna tikanga, bicultural practice, and culturally empowering pedagogies are valued as a means to support child development.

He aha ngā hua?

- He ako kei rō horopaki ako reo rua, kākanorua, he ako ā-whānau. He tohu tēnei mā te hunga e ngākau nui ana ki te whakapākari i ā rātou mōhiotanga ki te reo Māori me ōna tikanga. Hei te tau tuatoru o te tohu paetahi, he reo rumaki ngā akoranga katoa (81+ te reo Māori).

Learn in a bilingual, bicultural, whānau-style atmosphere. This qualification is open to all who have a commitment to developing competence in te reo Māori me ōna tikanga. By the third year of the degree, the delivery is level 1 (81+% te reo Māori immersion).

- He ako ā-rorohiko, ā-kanohi kitea hoki te momo ako, nā reira, ka taea te ako mai tawhiti. Heoi anō me matua tae ā-tinana ki ētahi wāhanga o ia tau, he noho marae ki te hau kāinga o Kāi Tahu ia tau.

This is a mixed method style of delivery with content being available online, therefore there is the ability to learn from anywhere. Kanohi ki te kanohi (face-to-face) delivery will also be included in the programme through scheduled block wānanga each year and two noho marae each year.

- Ko ngā wheako mahi ngaio, arā ngā akoranga 'Mana Ako', kei rō whare kōhungahunga me ngā kura tuatahi Māori he wāhanga matua kia mārama pū ki ngā āhuetanga o te horopaki ako me ngā mahi o te kaiako.

Professional Practice Exploration experiences may occur in whare kōhungahunga (early childhood centres), bilingual primary, and kura kaupapa Māori settings throughout your degree.

Ngā akoranga

The Mātauranga Māori endorsement is a part of an undergraduate teaching qualification taught in the Kāi Tahu takiwā. The programme will be initially delivered bilingually and later in a fully immersive te reo Māori environment to strengthen competence and confidence to teach in and through te reo Māori and embed tikanga and mātauranga Māori in daily practice.

For those that enter the programme with a high level of fluency in te reo Māori, you may either have some courses recognised at entry, therefore fast-tracking your degree. Or you may choose to take advanced te reo Māori me ōna tikanga courses that will be taught in Summer school, essentially allowing you to complete your degree before 3 years.

UC offers introductory te reo Māori courses over the summer months, before starting your degree, for those that need a stronger foundation to the language.

Topics can include:

- te reo Māori, tikanga Māori and mātauranga Māori including Te Maramataka
- Māori perspectives of wellbeing including all dimensions; tinana, wairua, hinengaro, whānau, and whakapapa
- how to notice, celebrate, and support the unique skills and strengths of our tamariki/mokopuna
- Professional Practice Exploration experiences in kura and whare kōhungahunga.

canterbury.ac.nz/courseinfo

Career opportunities

Ko ngā pūkenga o te reo Māori me ōna tikanga, me ngā mātauranga Māori ētahi pūmanawa whakaharahara ki Aotearoa nei, he tino taonga mā tātou katoa. Ko ngā raukura o tēnei tohu, e kaha kōrero Māori ana, me ngā pūmanawa o te kākanorua, e kaha pīrangitia ana hei kaimahi ki Aotearoa me te ao whānui, nā ngā mōhiotanga maha, me ngā hononga ki ngā iwi taketake o te ao.

Ko ngā māramatanga o ngā tikanga rua, he tūāpapa pai mō ngā mahi kei ngā kaupapa here mātauranga, mahi kaitautoko whakaako me ētahi atu kaupapa ki te poipoi i ā tātou tamariki, mokopuna.

Kaiako with skills in te reo Māori and mātauranga Māori are highly valued in Aotearoa in both English medium and Māori medium settings.

Bicultural knowledge and competence is essential for work in educational policy, support services, and other fields that involve working with and for people.

Career pathways could include:

- kaiako (teacher)
- tumuaki (principal)
- Māori language consultant
- culturally responsive pedagogies leader or advisor.

canterbury.ac.nz/life/jobs-and-careers

Study Mātauranga Māori:

- Ako: Bachelor of Teaching and Learning

Primary Teaching

Primary teachers work with tamariki in Years 1–8 (ages 5–13) in primary, intermediate, middle, and area schools. Primary Teaching allows you to encourage and discover children's lifelong potential and make a real difference to their lives.

What will my study involve?

- Learn how to teach the Primary curriculum, including mathematics, English, science, technology, social studies, health and PE, art, music, dance, drama, and languages.
- Develop your teacher identity and the skills to be advocates, leaders, and creators of knowledge in the Primary sector.
- Bicultural focus interweaving Māori and Western knowledge and Māori teaching practices, including a noho marae experience and Te reo Māori me onā tikanga courses that will be taught in each year.
- Mentored professional learning experience in a kura/early childhood centre/school alongside an experienced kaiako.

Courses

Our Primary qualifications have four basic components:

Professional Studies and Education

Courses address areas such as:

- observation
- communication
- interaction
- management
- planning
- practical teaching skills
- aims and purposes of education
- child development
- teaching and learning
- classroom management
- assessment
- Aotearoa New Zealand education system
- socio-political and cultural contexts.

Professional Practice

Working in a classroom provides a helps you refine your planning, teaching, and relational skills. Professional Practice introduces you into the complexities of the teacher's role within the classroom, the school, and the wider community. In the first year of the Ako: Bachelor of Teaching and Learning, placements will be spread

over ten days in Semester 1, and four weeks in Semester 2. During your Professional Practice, you will spend approximately eight hours a day working alongside an experienced teacher.

Curriculum Studies

These include all curriculum subjects that you will be expected to teach:

- English
- Art
- Music
- Drama and dance
- Health and physical education
- Mathematics
- Science
- Technology
- Social studies
- Learning languages.

Courses will also provide opportunities to design cross-disciplinary and project-based learning experiences.

Te Mana o Te Tiriti o Waitangi

Courses will focus on obligations to Te Tiriti o Waitangi. This includes year-long courses to learn te reo Māori and tikanga Māori for teaching.

canterbury.ac.nz/courseinfo

Career opportunities

A Primary Teaching degree opens up teaching and management job opportunities in primary, intermediate, middle, and area schools.

You will also have transferable skills to roles outside of teaching that involve knowledge of education and learning as well as working with young people.

Career pathways could include:

- primary teaching
- education policy
- community and youth work
- advocacy.

Study Primary Teacher Education:

- Ako: Bachelor of Teaching and Learning
- Graduate Diploma in Teaching and Learning
- Postgraduate Diploma in Teaching and Learning
- Master of Teaching and Learning

Secondary Teacher Education

Secondary teachers work with young adults in Year 7–13, ages 11–18 years. To complete this subject, you will need to already have an Aotearoa New Zealand bachelor's degree. Upon graduation, you will be able to apply for teacher registration.

Alternative Entry Pathway

UC also offers an alternative entry pathway into the Graduate Diploma in Teaching and Learning (Secondary endorsement) in Technology and Te Reo Māori. See [page 18](#) for details.

Physical Education teacher pathway

Graduates of the Bachelor of Sport (BSport) or the Bachelor of Health Sciences (BHSc) can also study to become secondary school Physical Education teachers with an additional teaching qualification. If you are thinking of PE or Health teaching, contact our Student Advisors to help you plan your BSport or BHSc degree so you are including the right courses.

What will my study involve?

- Key skills in managing a classroom, presenting lessons, and supporting the different ways people learn.
- Focus your teaching on your intended secondary school subject from a wide range of options — art to chemistry to te reo Māori.
- Multiple placements in secondary schools around Aotearoa so you can work with practicing teachers, meet principals, and teach directly to students.

Courses

UC's secondary teaching degrees include professional teaching practice, learning methods, NCEA assessment standards, and teacher preparation in your specialised teaching subject.

Secondary Teacher Education is made up of courses in the following areas of study:

Professional Inquiry

This is where you learn about teaching, including professional codes and standards, ethics, theories and approaches, fostering positive relationships and learning

environments, and the political, social, cultural, and historical contexts of secondary education. You will focus on learners as members of whānau and communities; bicultural education and culturally responsive and sustaining practice; learner development and inclusive education.

Teaching Practice

The school-based requirement of the programme is where you'll gain skills and experience in the classroom.

Curriculum Studies

Courses focus on the essential learning areas of the New Zealand Curriculum, including curriculum statements, subject assessment standards and practices, teaching approaches, and curriculum resources. They also focus on contemporary curriculum developments and approaches for integrated teaching and learning across subjects.

You will hone your skills for teaching, including communication and presentation skills, design for learning, managing positive learning environments, and use of technology in education and e-learning.

Secondary Education — specialist teaching subjects

For our secondary teacher qualifications, you will need to choose a teaching subject and have an academic background in this subject. Your teaching subject is chosen from those taught at junior and senior secondary levels, and you will focus on your specialist teaching subject (which you will preferably have studied to 300-level).

We offer the following specialist teaching subjects:

- Art
- Biology with Science
- Classical Studies with Social Studies
- Chemistry with Science
- Commerce with Business Studies
- English
- Geography with Social Studies
- Health with HPE
- History with Social Studies
- International Languages
- Mathematics
- Music
- Outdoor and Environmental Education with HPE
- Performing Arts
- Physical Education with HPE

- Physics with Science
- Te Reo Māori
- Technology

Secondary Education — additional subjects

For our secondary teacher qualifications, you will also need to choose an additional teaching subject, for which you have a background of study to 100 or 200-level (depending on the subject). Additional teaching subjects are usually junior subjects (years 7–10) including:

- Art
- Business Studies
- English
- HPE (Health and PE)
- International Languages
- Mathematics
- Music
- Performing Arts
- Science
- Social Studies
- Te Ao Haka
- Te Reo Māori
- Technology
- Vocation Education and Pathways

Talk to our Student Advisors to make sure you are selecting the right teaching subjects and study pathway for you.

canterbury.ac.nz/study/academic-study/subjects/secondary-teacher-education-pg

Career opportunities

After completing one of our programmes, you will be eligible to apply for provisional registration as a secondary school teacher and can apply for teaching positions in Aotearoa schools and in many countries around the world.

A teaching degree also prepares you for roles in school leadership, business management, and services that involve training and working with youth and other people.

Some career pathways could include:

- Secondary teaching
- Public sector
- Human services
- Industry training.

canterbury.ac.nz/life/jobs-and-careers

Study Secondary Teacher Education:

- Graduate Diploma in Teaching and Learning
- Postgraduate Diploma in Teaching and Learning
- Master of Teaching and Learning

Ka whai ake nei Next Steps



How do I apply?

Our teacher education programmes have special application and selection processes.

Applications open from April and close on **1 December** each year for domestic applicants (**31 October** each year for international applicants), or when places are filled.

How do I apply?

1. Apply to enrol at UC

Apply to enrol at the University of Canterbury through myUC (myuc.canterbury.ac.nz).

2. Apply to the teacher education programme

You will need to provide:

- a CV, resume, or statement of previous experience. This can be a traditional resumé, or a written statement if you do not have any formal work experience.
- transcripts of all tertiary study completed and in progress.
- two referee reports.
- a school report (for those still in secondary school).
- evidence of language competency.

3. Complete an online literacy test

Once you have applied in myUC, our selection team will contact you to arrange online literacy and numeracy tests.

4. Interview

If you have met the above requirements, you will then be invited to an interview.

5. Proof of identity

You'll need to present two accepted forms of identity evidence at your teacher education interview.

6. Complete a Police background check

Complete a Police background check before your programme begins.



It's important to submit all documents promptly, as your application will be held up if we have not received all required materials.

What can I do to help my chances of getting a place?

There are a lot of things that can help you to stand out. Here are some tips:

- Apply early — you give yourself the best chance of getting a place if you get your application form in early.
- Get teaching experience — it comes across when you have had experience with something similar to teaching. If you can spend some time in a school or early childhood centre, that can give you a really good taste of what it is like to be a teacher. Coaching sports teams, working in after-school care, on holiday programmes, or in mentoring roles are also good.
- Choose the best referees — your referees write confidential reports that come directly to us, so pick people who are going to be really supportive. If you have an employer, sport coach, mentor etc, they could be a good referee and might have really good examples of why you would be a good teacher. Choose people who can give us further information about you which is not already in your application.

Secondary teaching alternative entry pathway

This entry pathway into the Graduate Diploma in Teaching and Learning for Secondary endorsement is for individuals who have:

- a minimum of five years of recent employment within a trade, or with high levels of te reo Māori language use
- work qualifications and professional development
- experience relating leadership or management
- evidence of work in a coaching, mentoring, or teaching role.

How to apply

The above information should be provided in a CV alongside the regular UC application form and referee reports.

You will also need to provide some additional information about work experience in the curriculum area you seek to teach. If selected, you will be invited to an on-site interview process.

Programme delivery

This pathway is available via campus or distance study. The distance option can be completed full-time in one year or part-time over two years. The campus option must be studied full-time.

Key dates



May/June/July
Hui Tairanga
Information Evenings



August
Accommodation
applications open



July
Scholarship
applications open



October
Applications to
enrol open*



August
Rā Tōmene | Open day

* Teaching applications open in April. For exact information, please visit the UC website, see **page 18**, or contact a Future Student Advisor.

Tautoko | Get support



From the moment you arrive on campus to your graduation, UC has support available every step of the way.

Te Pātaka | Student Services Hub is your go-to support centre, located on levels 2 and 3 in the Puaka-James Hight building (central library). You will find both academic and wellbeing services in one location and they will connect you to the relevant support teams.

You can receive help with anything you need, whether that's for study and exams, health, sport, counselling, injuries, job search, and more.

To read more about all the support services, go to – canterbury.ac.nz/life/support-and-wellbeing

Your students' association

Te Rōpū Ākonga o Te Whare Wānanga o Waitaha | University of Canterbury Students' Association (UCSA) is a non-profit organisation that helps all students find support and feel like they belong at UC.

We have more than 160 clubs and regularly host events on campus.

We offer advocacy services, dental and optometry services, welfare and financial services, advisory groups, class reps, and more.

ucsa.org.nz

Pastoral Care

The Education (Pastoral Care of Tertiary and International Learners) Code of Practice 2021 is designed to guide institutions in their practice and to protect students when they study in Aotearoa. UC is a signatory to the Code and is required to meet the standards set by the New Zealand government.

nzqa.govt.nz/providers-partners/tertiary-and-international-learners-code



“I immediately felt a sense of support at UC and the value of whanaungatanga. The way UC advocates for student wellbeing showed me the importance of tiakitanga. And finally, the way lecturers listened to my goals and helped me create a plan to achieve them showed me the UC value of manaakitanga.”

Todor
Bachelor of Commerce in Finance and Economics

Whakapā mai | Contact us



Get in touch

If you would like more information about what you can study at UC, contact the Future Students Office:
canterbury.ac.nz/communities/future-students

Te Whare Wānanga o Waitaha University of Canterbury

T: +64 3 369 3999
Freephone in NZ: 0800 VARSITY (827 748)
E: info@canterbury.ac.nz
AskUC Chat is available between 8am–5.15pm Monday–Friday (except NZ public holidays).
canterbury.ac.nz

Talk to a UC student

Get answers to your questions about what it's like being a student at UC, and life in Ōtautahi Christchurch.



UC social media

 facebook.com/universitycanterbury

 instagram.com/ucnz

 twitter.com/ucnz

 snapchat.com/add/uc.nz

 youtube.com/UniversityCanterbury

 linkedin.com/school/university-of-canterbury

Proud supporters of



**UNIVERSITY OF
CANTERBURY
YOUNG NEW
ZEALANDER OF
THE YEAR**

**WORD
CHRISTCHURCH
FESTIVAL**



Rā Tōmene Open Day

Discover your degree options.
Explore our campus.
Experience student life.

30 August 2024

For more information, visit
canterbury.ac.nz/openday



150 years
1873–2023